



Rotherham Road, Beighton, Sheffield, South Yorkshire, S20 1AG



A good sized Bay fronted three bedroom semi-detached house is situated within the popular residential location of Beighton, positioned close to ample local amenities & public transport links, along with local primary & secondary schools.

Perfect for any professional couple or family alike, having easy access to the City Centre, Parkway & M1 motorway network links.

the accommodation benefits for gas central heating & double glazing and having no onward chain involved and immediate vacant possession.

The accommodation in brief comprises: Entrance hallway leading into the fitted kitchen with dining area with rear facing French style doors accessing the rear garden, as well as leading through to the bay fronted living room.

First floor landing: Two double bedrooms & one single bedroom

Family bathroom with wash hand basin, low flush WC and bath with electric shower above and tiling to the splash backs.

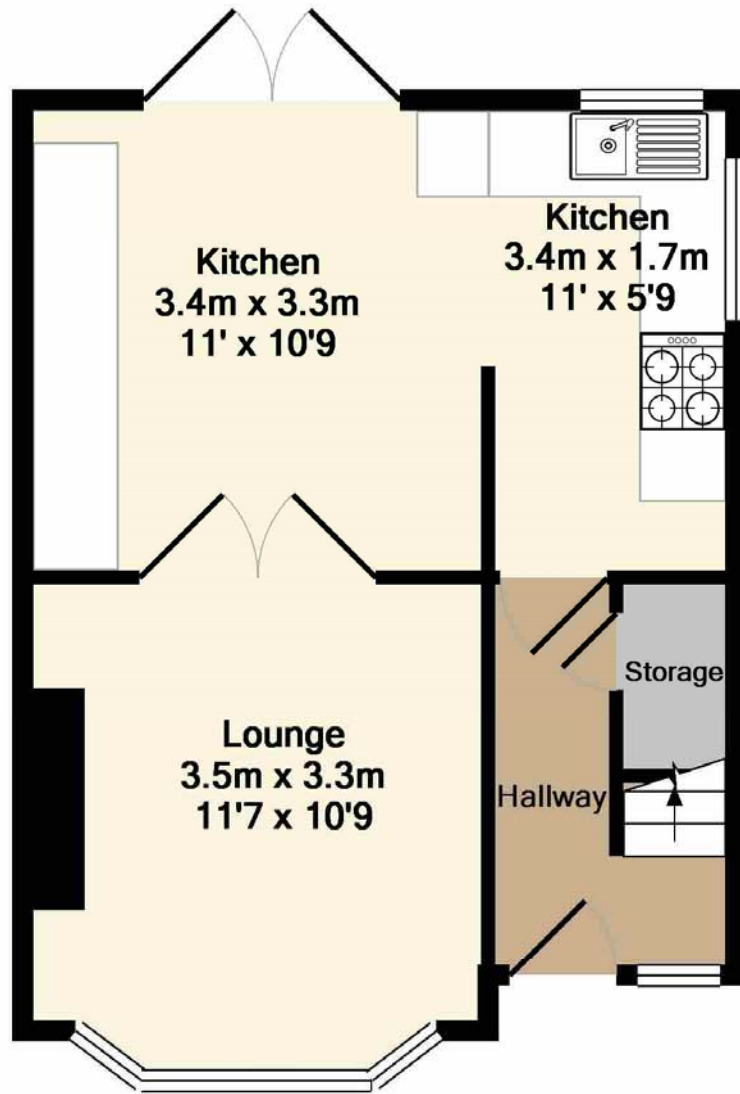
Externally: Enclosed rear garden with patio area to the rear of the accommodation and brick built storage shed.

Whilst to the front of the property a blocked paved driveway provides off road parking for two vehicles.

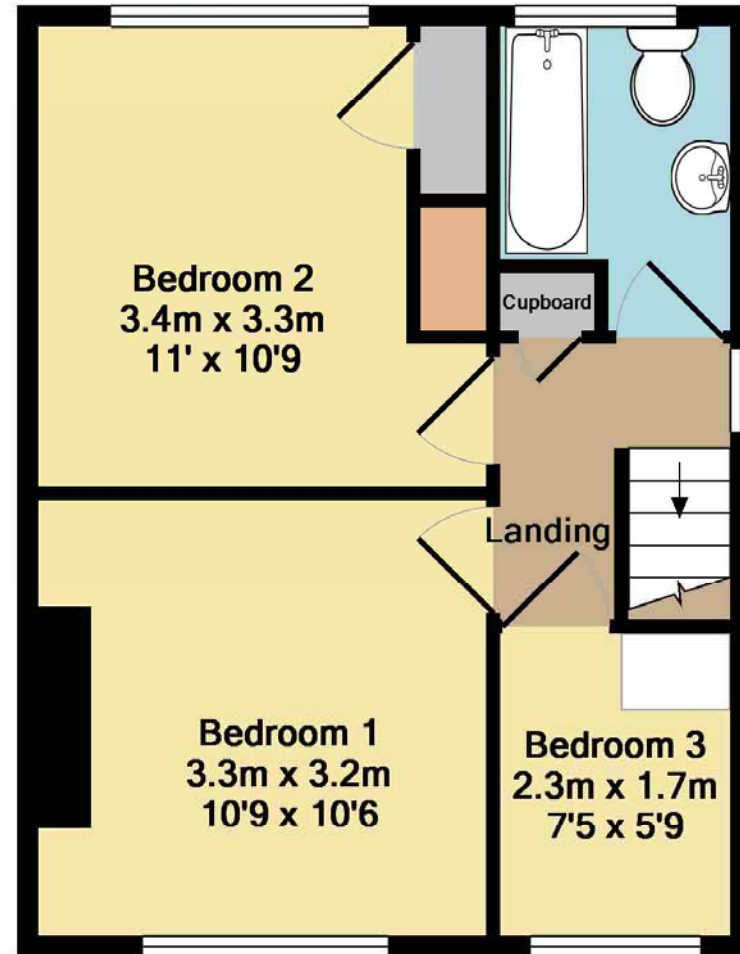
Early viewing is highly recommended.

Location: Situated in this popular area of Beighton, the property is ideally placed for a host of local amenities and schools along with boasting excellent links to the M1 motorway networks and Sheffield City Centre. Close by to Crystal Peaks Shopping Centre and Rother Valley Country Park, an early viewing is highly recommended.





Ground Floor
Approx. Floor
Area 32.2 Sq.M.
(346 Sq.Ft.)



1st Floor
Approx. Floor
Area 32.1 Sq.M.
(346 Sq.Ft.)

Total Approx. Floor Area 64.3 Sq.M. (692 Sq.Ft.)
Made with Metropix ©2019



Viewing arrangement by appointment 0114 248 4444

crystalpeaks@blundells.com

5 Peaks Square, Sheffield, S20 7PH

www.blundells.com



Land & New Homes | Auctions | Mortgage Services | Surveys | Conveyancing

Interested parties should satisfy themselves, by inspection or otherwise as to the accuracy of the description given and any floor plans shown in these property details. All measurements, distances and areas listed are approximate. Fixtures, fittings and other items are NOT included unless specified in these details. **Please note that any services, heating systems, or appliances have not been tested and no warranty can be given or implied as to their working order.**

A member of Countrywide plc. Countrywide Estate Agents, trading as Blundells, registered office: Countrywide House, 88-103 Caldecotte Lake Drive, Caldecotte, Milton Keynes, MK7 8JT. Registered in England No. 789476 | Code: BlundellsEA_CYP_CYP190053_PL4PL_8

