



Metis, 1 Scotland Street, Sheffield, South Yorkshire, S3 7AT

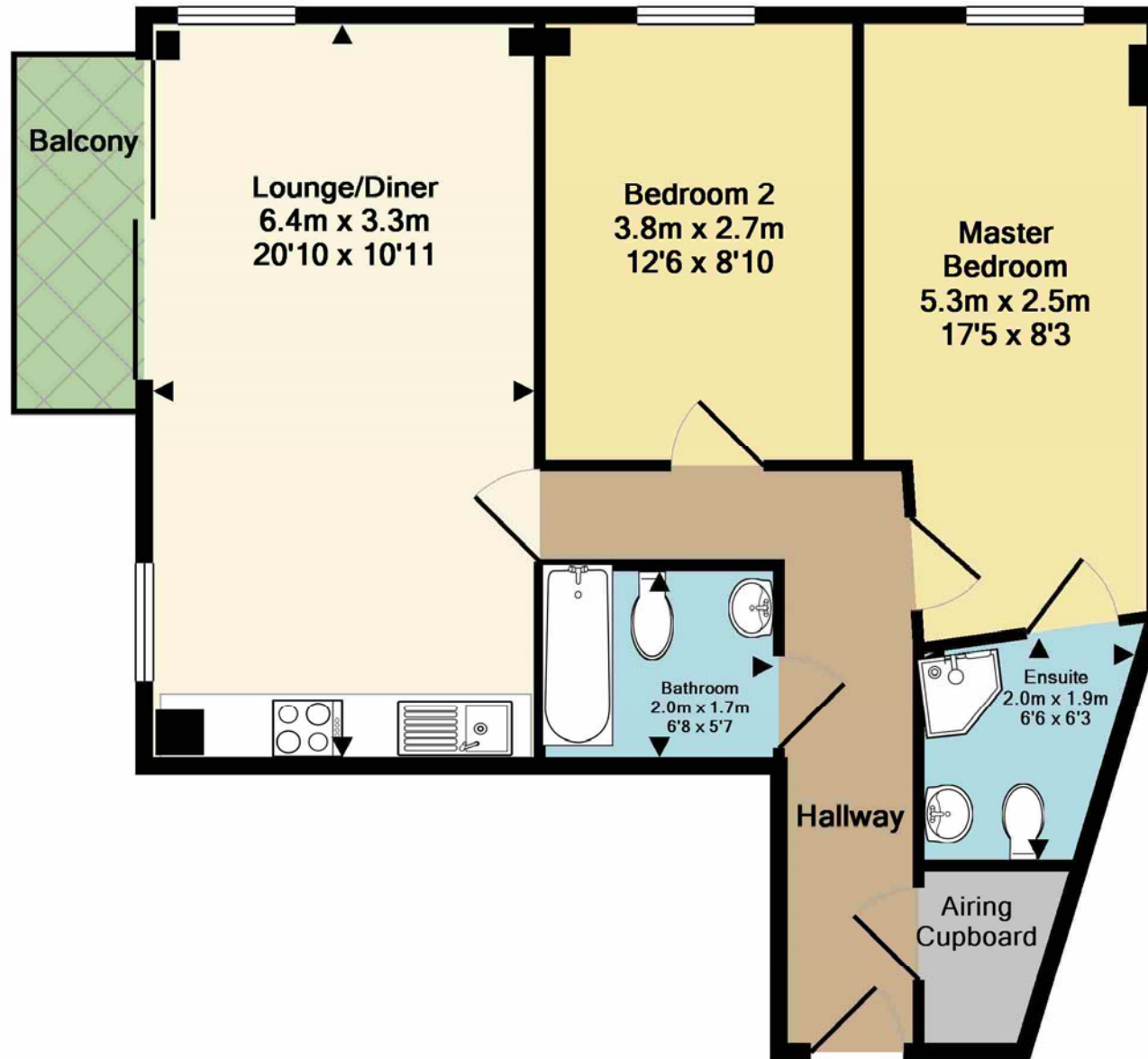


Situated on the eleventh floor of the Metis Development is this two bedroomed apartment with allocated parking space.

The development is well placed for a host of shops and restaurants within the City Centre and just minutes away from the Cathedral.

The apartment benefits from wood veneer flooring, balcony, security intercom, modern kitchen with integrated appliances, en-suite shower room and allocated car parking space. Viewing advised.





Total Approx. Floor Area 59.7 Sq.M. (643 Sq.Ft.)
Made with Metropix ©2018



Viewing arrangement by appointment 0114 275 3853

sales@blundells.com

2 Campo Lane, Sheffield, S1 2EF

www.blundells.com



Land & New Homes | Auctions | Mortgage Services | Surveys | Conveyancing

Interested parties should satisfy themselves, by inspection or otherwise as to the accuracy of the description given and any floor plans shown in these property details. All measurements, distances and areas listed are approximate. Fixtures, fittings and other items are NOT included unless specified in these details. **Please note that any services, heating systems, or appliances have not been tested and no warranty can be given or implied as to their working order.**

A member of Countrywide plc. Countrywide Estate Agents, trading as Blundells, registered office: Countrywide House, 88-103 Caldecotte Lake Drive, Caldecotte, Milton Keynes, MK7 8JT. Registered in England No. 789476 | Code: BlundellsEA_CPL_HLS170406_PL4PL_8

