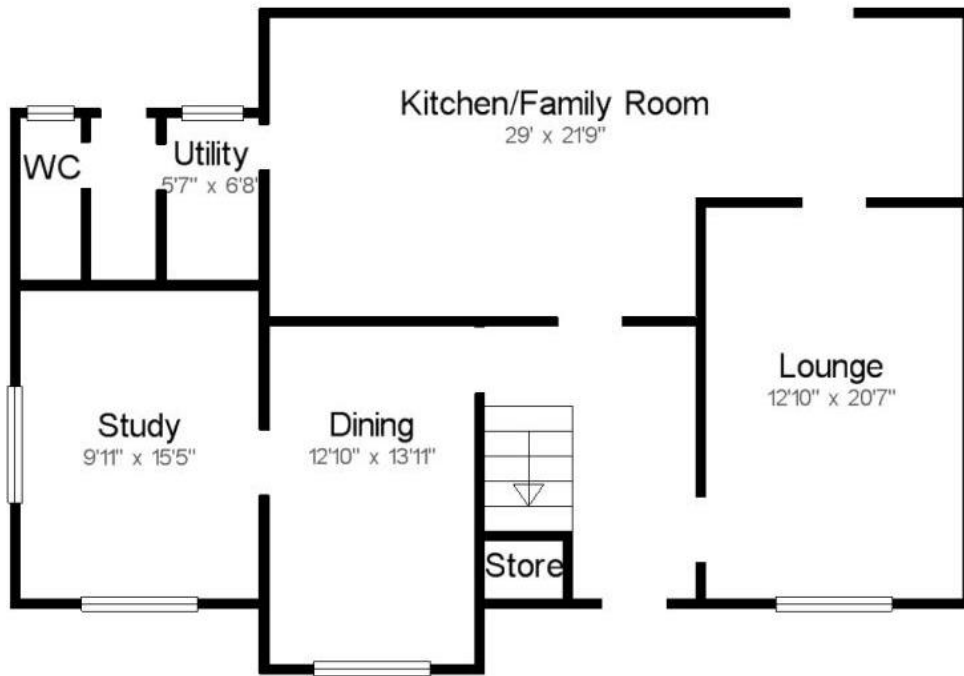




Liverpool Road West, Church Lawton, Stoke-on-Trent, Cheshire, ST7 3DF
Asking Price £595,000

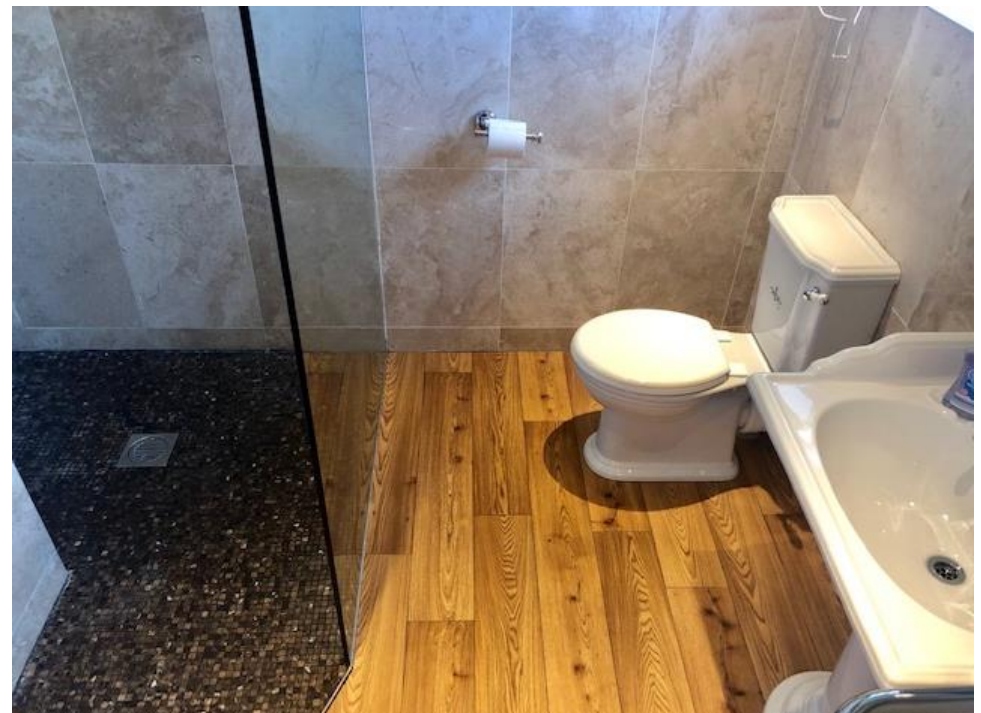








A simply stunning, detached traditional style family home which is located in a fabulous position set back from the road and approached via electronic double gates and overlooking the most beautiful rolling farmland to the rear. Internally the property is equally impressive with superb attention to detail throughout. The accommodation briefly comprises spacious and welcoming entrance hall, study, dining room, lounge with beautiful marble fireplace, Stunning open plan family dining kitchen which enjoys the views, guest WC and utility room. On the first floor there are four double bedrooms, two ensuite shower rooms and a family bathroom. Externally there is double detached garage with ample storage above. The rear garden is mainly laid to lawn with an established hedgerow, and affords fantastic views beyond. Internal and external viewing is strongly recommended to appreciate all that this property has to offer.





www.bridgfords.co.uk

Viewing arrangement by appointment

01270 878913

alsager@bridgfordscountrywide.co.uk

8 Crewe Road, Alsager, Cheshire, ST7 2ES



Land & New Homes | Auctions | Mortgage Services | Surveys | Conveyancing

Interested parties should satisfy themselves, by inspection or otherwise as to the accuracy of the description given and any floor plans shown in these property details. All measurements, distances and areas listed are approximate. Fixtures, fittings and other items are NOT included unless specified in these details.

Please note that any services, heating systems, or appliances have not been tested and no warranty can be given or implied as to their working order.

A member of Countrywide plc. Countrywide Estate Agents, trading as Bridgfords, registered office: Countrywide House, 88-103 Caldecotte Lake Drive, Caldecotte, Milton Keynes, MK7 8JT. Registered in England No. 789476 | Code: BridgfordsEA_ALS_ALS180363_AL6PLB_8