

Kingfisher Drive, Leighton Buzzard, Bedfordshire, LU7 4SG
Offers Over £180,000

TAYLORS



EPC **B**

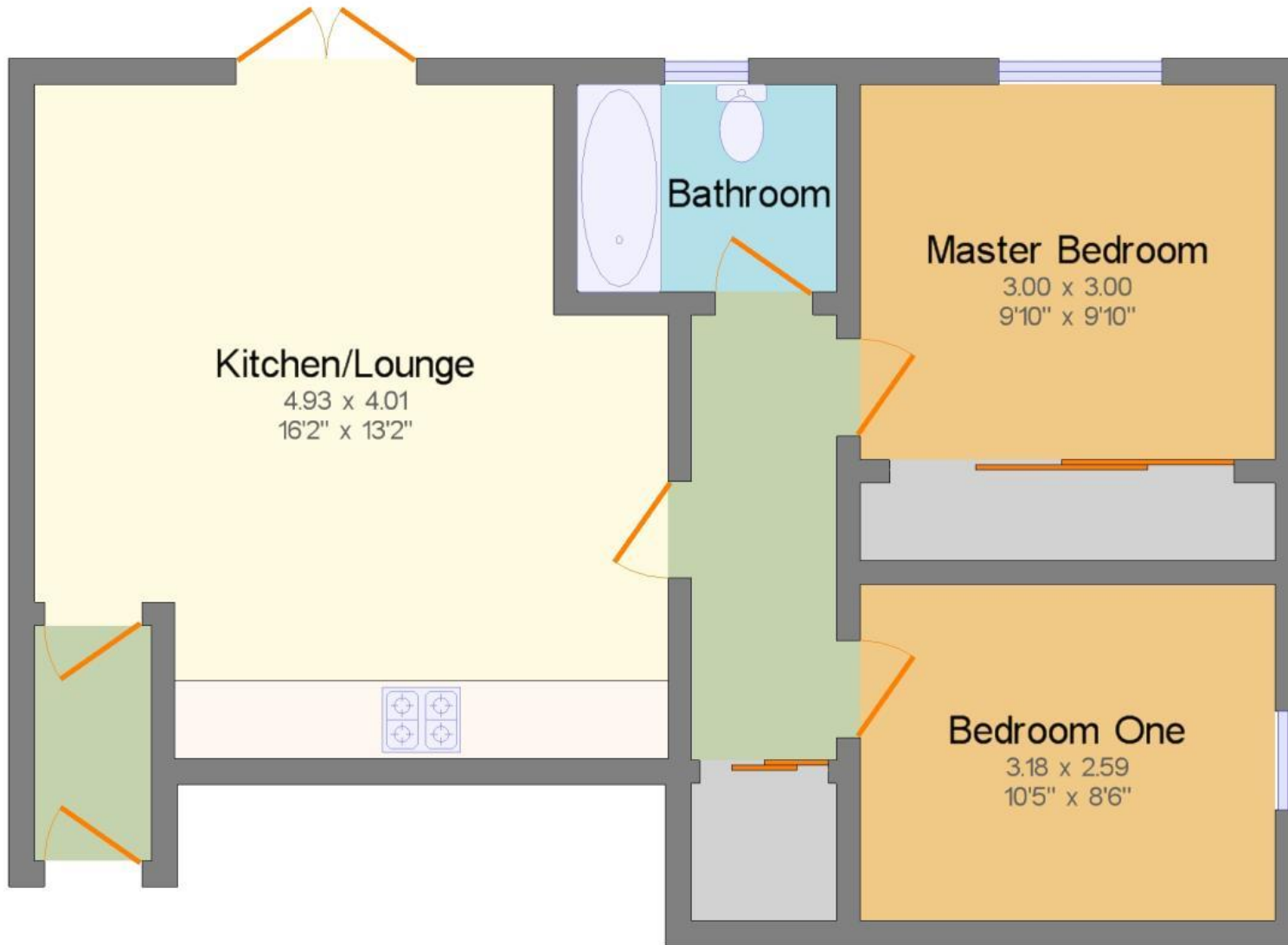


Two bedroom ground floor maisonette with garden. Boasting a 987 year lease with no charges this is a must see for first time buyers.

Property comprises of; entrance hall onto open plan kitchen/lounge leading onto garden. Two double bedrooms, two large storage cupboards and family bathroom. There is rear access to the garden next to your two allocated parking spaces.

Easy access onto the A505 to Dunstable, Aylesbury and Milton Keynes.

Call us now to arrange your viewing!



This plan is illustrative only,
its details cannot be relied upon and no liability is taken for any errors.

Floor Plan

Visit www.taylorsestateagents.co.uk

TAYLORS



Viewing arrangement by appointment

01525 372444

Taylors.LeightonBuzzard@Countrywide.co.uk 1 West Street, Leighton Buzzard, Beds, LU7 1DA



Countrywide Land & New Homes | Auctions | Mortgage Services | Surveys | Conveyancing

Interested parties should satisfy themselves, by inspection or otherwise as to the accuracy of the description given and any floor plans shown in these property details. All measurements, distances and areas listed are approximate. Fixtures, fittings and other items are NOT included unless specified in these details. **Please note that any services, heating systems, or appliances have not been tested and no warranty can be given or implied as to their working order.**

A member of Countrywide plc. Countrywide Estate Agents, trading as Taylors. Registered in England No. 789476

Code: CentralEA_MLB_MLB190155_SL4PL_8

