



Embry Way Stanmore HA7

£2,450 Per Month - Available 15/11/2017

Comfortable bungalow, comprising of attractive reception room, open kitchen diner, master bedroom with an en suite, three further bedrooms and family bathroom. Well kept garden, quality decking area backing onto St John's C of E School.
0.2 miles from St Johns's C of E School | Garden | Decking.

Description

Confirmable bungalow, comprising of attractive reception room, open kitchen diner, master bedroom with an en suite, three further bedrooms and family bathroom. Well kept garden, quality decking area backing onto St John's C of E School.

Furnishing

Unfurnished



Stanmore



Kitchen

Preston Bennett in association with Hamptons International

37-41 Church Road

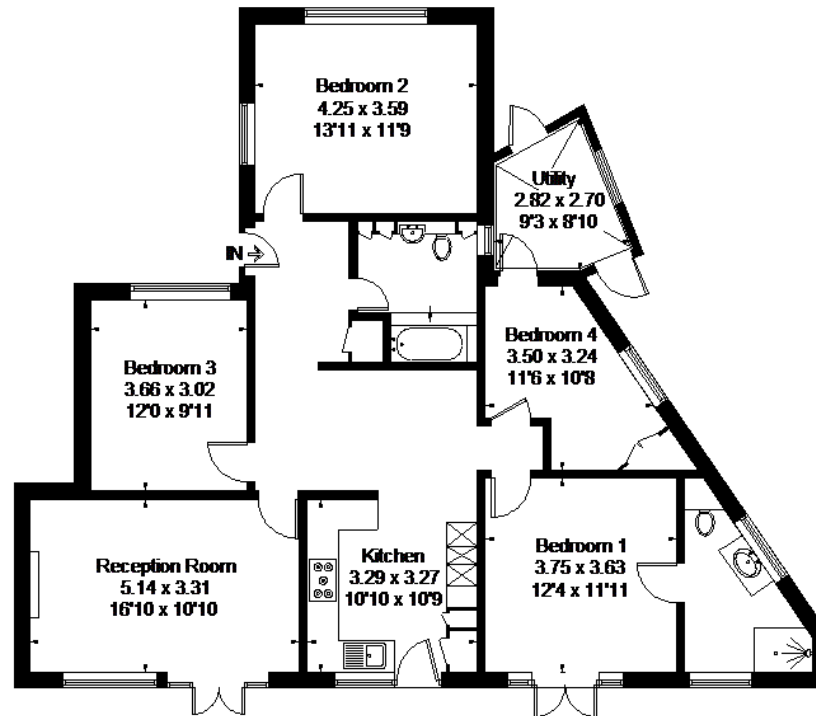
Stanmore HA7 4AA

Lettings. 020 86184555 - lettings@prestonbennett.co.uk

www.prestonbennett.co.uk www.hamptons.co.uk

Embry Way, Stanmore

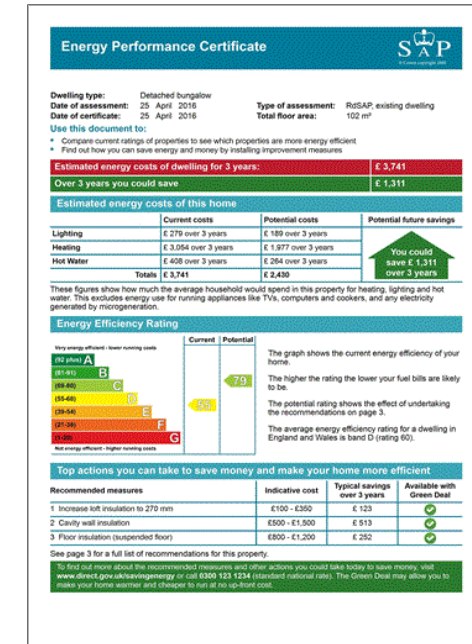
Approximate Gross Internal Area = 117.9 sq m / 1269 sq ft



Raised Ground Floor

FLOORPLAN © 2016 0845 6344080 Ref: 170860

This plan is for layout guidance only. Drawn in accordance with RICS guidelines. Not drawn to scale unless stated. Windows & door openings are approximate. Whilst every care is taken in the preparation of this plan, please check all dimensions, shapes & compass bearings before making any decisions reliant upon them.



For clarification, we wish to inform prospective purchasers that we have prepared these sales particulars as a general guide. We have not verified permissions, nor carried out a survey, tested the services, appliances and specific fittings. Room sizes are approximate and rounded: they are taken between internal wall surfaces and therefore include cupboards/shelves, etc. Accordingly, they should not be relied upon for carpets and furnishings. It should also be noted that all fixtures and fittings, carpeted, curtains/blinds, kitchen equipment and garden statuary, whether fitted or not, are deemed removable by the vendor unless specifically itemised with these particulars.