



Sunderland Gardens Newbury RG14

£1,200 Per Month (Unfurnished) - 2016-11-14

HAMPTONS
INTERNATIONAL

Beyond your expectations

Sunderland Gardens, Newbury, RG14

£1,200 Per Month (Unfurnished)

2 Double Bedrooms, Off Street parking, Conservatory, Garden, Downstairs WC.



Description

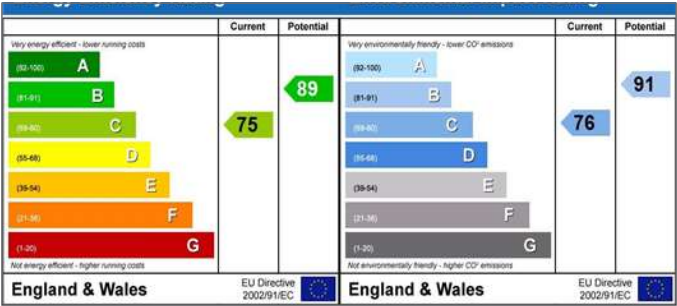
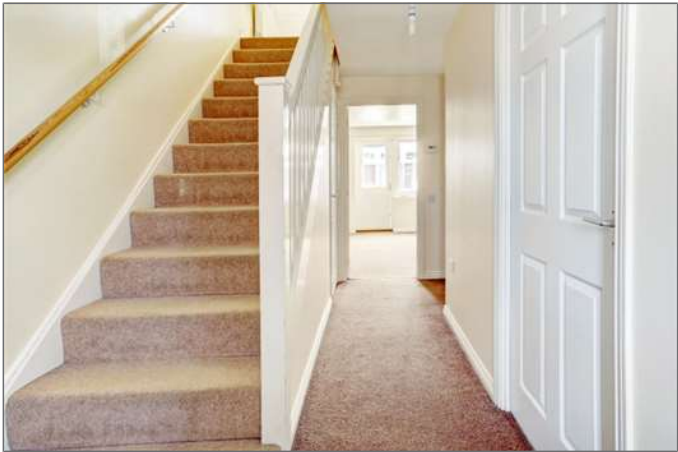
Hamptons are delighted to present this spacious two bedroom house in a fantastic location. There is a large and light entrance hallway which leads to a spacious kitchen with plenty of cupboard space. From the hallway you have a downstairs WC and a large under stairs storage cupboard. Into the living room which has ample space and has windows overlooking the conservatory which benefits from French doors out to the garden which has a small patio area and remainder laid to lawn.

Situation

The property is located to the west of Newbury town centre giving it access to Newbury Race Course, railway station, golf course and the centre of the town which offers excellent shopping, theatre and cinema, a choice of restaurants and bistros, and with the Kennet and Avon canal running through the heart of the town. Newbury offers access to the M4 motorway (J13) via the Newbury A34 bypass and Newbury Station provides access to London Paddington in under an hour. The area offers a large variety of well regarded schools for all age groups.

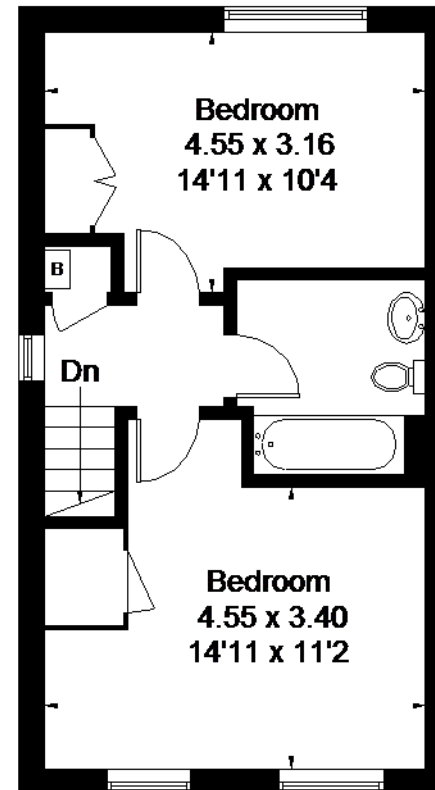
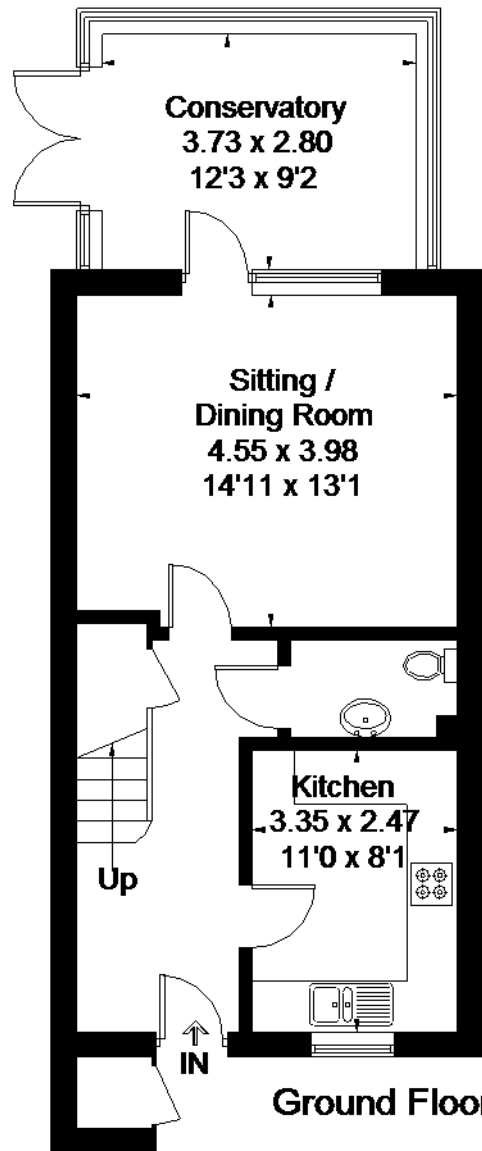


Kitchen



Sunderland Gardens, Newbury

Approximate Gross Internal Area
91.2 sq m / 982 sq ft



Floorplanz © 2016
0845 6344080 Ref: 164648

This plan is for layout guidance only.
Drawn in accordance with
RICS guidelines. Not drawn to
scale, unless stated. Windows &
door openings are approximate.
Whilst every care is taken in the
preparation of this plan, please check
all dimensions, shapes & compass
bearings before making any
decisions reliant upon them.

For clarification, _____

HAMPTONS
INTERNATIONAL



Family Bathroom

