

Premium



Highfield Lane Tyttenhanger AL4

£1,995 Per Month (Furnished) - 2016-10-22



Beyond your expectations



# Highfield Lane, St. Albans, AL4

## £1,995 Per Month (Furnished)

Two Double Bedrooms, Spacious Lounge, Fitted Kitchen, Dining Area, Family Bathroom, Ensuite to Master, Private Terrace, Communal Gardens, Two Parking Spaces, Available October.

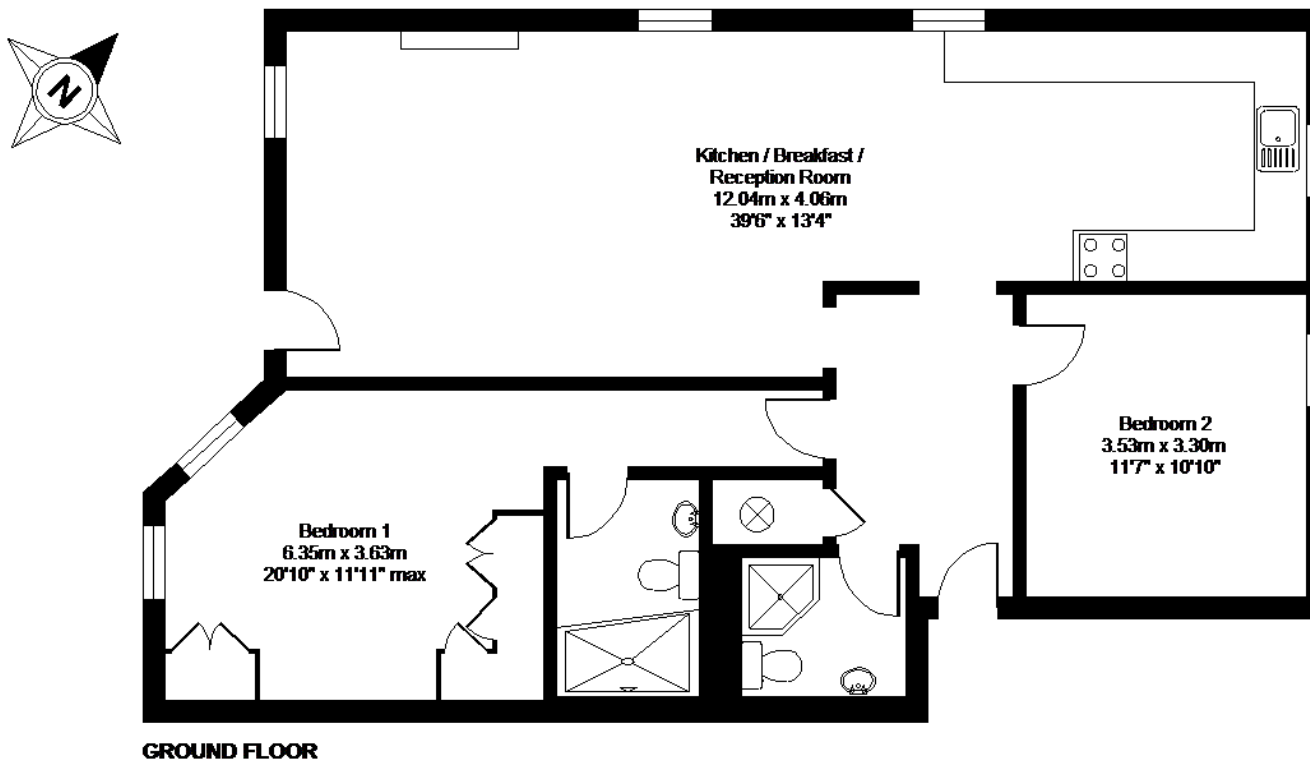


### Description

A outstanding, larger than average, two bedroom two bathroom ground floor apartment with a private terrace in the prestigious Highfield Hall. With high ceilings and large windows, the apartment is set within approx. 8 acres of well manicured communal grounds to include a tennis court and bbq area. The Landlord is flexible on furnishings and the property can be offered either furnished or unfurnished.



		Current	Potential			Current	Potential
Very energy efficient - lower running costs				Very environmentally friendly - lower CO <sub>2</sub> emissions			
(93-100)	A			(92-100)	A		
(81-92)	B			(81-91)	B		
(69-80)	C			(69-80)	C		
(55-68)	D			(55-68)	D		
(39-54)	E			(39-54)	E		
(21-38)	F			(21-36)	F		
(1-20)	G			(1-20)	G		
Not energy efficient - higher running costs				Not environmentally friendly - higher CO <sub>2</sub> emissions			
		71	75			70	74
England & Wales		EU Directive 2002/91/EC		England & Wales		EU Directive 2002/91/EC	



## Highfield Hall, Highfield Lane, Tyttenhanger, St. Albans, AL4

**APPROX. GROSS INTERNAL FLOOR AREA 992 SQ FT 92.1 SQ METRES**

Whilst every attempt has been made to ensure the accuracy of the floor plan contained here, measurements of doors, windows and rooms are approximate and no responsibility is taken for any error, omission or misstatement. These plans are for representation purposes only as defined by RICS Code of Measuring Practice and should be used as such by any prospective purchaser. Specifically no guarantee is given on the total square footage of the property if quoted on this plan. Any figure given is for initial advice only and should not be relied on as a basis of valuation.

Copyright nichecom.co.uk 2016 Produced for Hamptons Country Lettings REF : 78918

For clarification, \_\_\_\_\_

**HAMPTONS**  
INTERNATIONAL

