



Hightown Gardens Banbury OX16

£875 Per Month - Available 30/11/2018

HAMPTONS
INTERNATIONAL

Beyond your expectations

Need to be near the hospital? This 2 bedroom 2 bathroom apartment is on the second floor has 1 allocated parking space. Managed by Hamptons.

2 bedrooms | 2 Bathrooms | Open plan living | Kitchen | Some appliances | Parking | Entry phone.

Description

This 2 bedroom 2 bathroom apartment is located on the second floor with 1 allocated parking space and secure entry phone plus lift access. The apartment has an open plan living arrangement incorporating the kitchen area and living space, with 2 double bedrooms, 2 bathrooms and some further wardrobe space. The apartment is light, airy and is available unfurnished with some appliances, including a washer/ drier, fridge freezer, oven/hob and dishwasher.

close to J 11 of the M40 which is also a short drive away.

Furnishing

Unfurnished



Situation

Located very close to the Horton Hospital in Banbury and a short distance from both the town centre and the railway station too. Banbury is a busy market town with plenty of local facilities in the town centre and on a newly built retail park

Hamptons Banbury Lettings

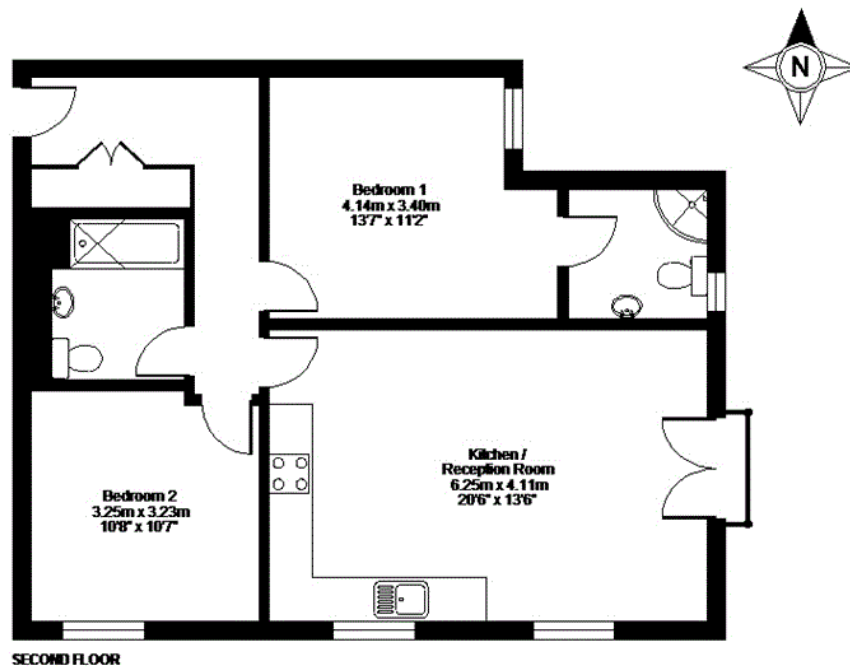
44 Market Place

Banbury OX16 5NW

Tel: 01295 277882 - banburylettings@hamptons-int.com

www.hamptons.co.uk

Floorplan

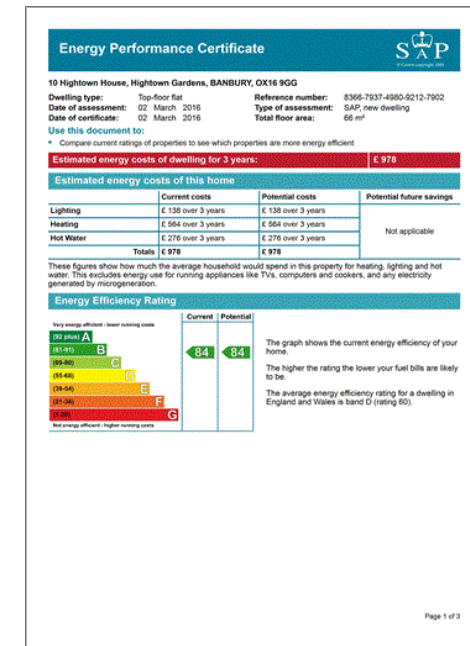


APPROX. GROSS INTERNAL FLOOR AREA 747 SQ FT 69.3 SQ METRES

Whilst every attempt has been made to ensure the accuracy of the floor plan contained here, measurements of doors, windows and rooms are approximate and no responsibility is taken for any error, omission or misstatement. These plans are for representation purposes only as defined by RICS Code of Measuring Practice and should be used as such by any prospective purchaser. Specifically no guarantee is given on the total square footage of the property if quoted on this plan. Any figure given is for information only and should not be relied on as a basis of valuation.

Copyright nichcom.co.uk 2016 Produced for Hamptons Country Lettings REF : 96788

Energy Performance Certificate (EPC)



For clarification, we wish to inform prospective purchasers that we have prepared these sales particulars as a general guide. We have not verified permissions, nor carried out a survey, tested the services, appliances and specific fittings. Room sizes are approximate and rounded: they are taken between internal wall surfaces and therefore include cupboards/shelves, etc. Accordingly, they should not be relied upon for carpets and furnishings. It should also be noted that all fixtures and fittings, carpeted, curtains/blinds, kitchen equipment and garden statuary, whether fitted or not, are deemed removable by the vendor unless specifically itemised with these particulars.

Hamptons Banbury Lettings

44 Market Place

Banbury OX16 5NW

Tel: 01295 277882 - banburylettings@hamptons-int.com

www.hamptons.co.uk

HAMPTONS
INTERNATIONAL

Beyond your expectations