



Bromet Close, Watford WD17

£1,000 Per Week (Furnished) - 2016-10-16

HAMPTONS
INTERNATIONAL

Beyond your expectations

Bromet Close, Watford, Hertfordshire, WD17

£1,000 Per Week (Furnished)

3 Bedrooms, 1 Bathroom, Gas Central Heating, Dishwasher, Media System, Open Fireplace, Communal Garden, Garage, Off Street Parking.

HAMPTONS
INTERNATIONAL

Description

A stunning top floor maisonette, fully furnished, offering two bedrooms with double beds and a further study /games room. The property has been completely refurbished to an exceptional standard, offering luxury accommodation including Sky TV in the lounge and bedrooms. The brand new kitchen is fully equipped with modern appliances and designer work tops and includes a breakfast bar. Ideal short let for professionals who prefer the comfort of home to a hotel room. Available on a weekly or monthly basis.

Situation

Watford is situated in the south of the county between the M25 and M1 motorways and only a 20 minute train journey from Euston station. The River Gade runs along the west of Watford while the River Colne runs along the east. Shopping is dominated by the Intu Centre in the heart of the town, with major names including John Lewis and Marks and Spencer. Cassiobury Park in the West of Watford provides enjoyable walks and also has a golf course. Vicarage Road in Watford is home to Watford Football Club and Saracens Rugby Club. Watford has a great selection of quality secondary and primary schools. A very popular choice is Parmiters Secondary School

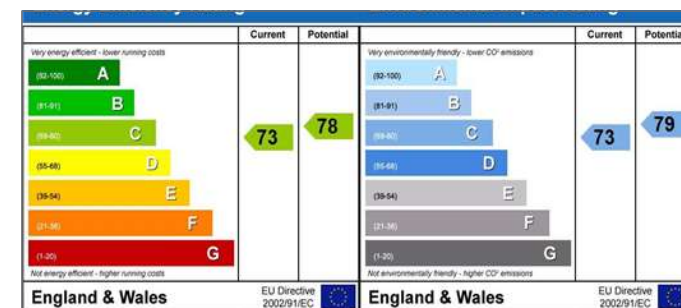
and Watford Boys and Girls Grammar School.

Outside

Communal gardens and parking



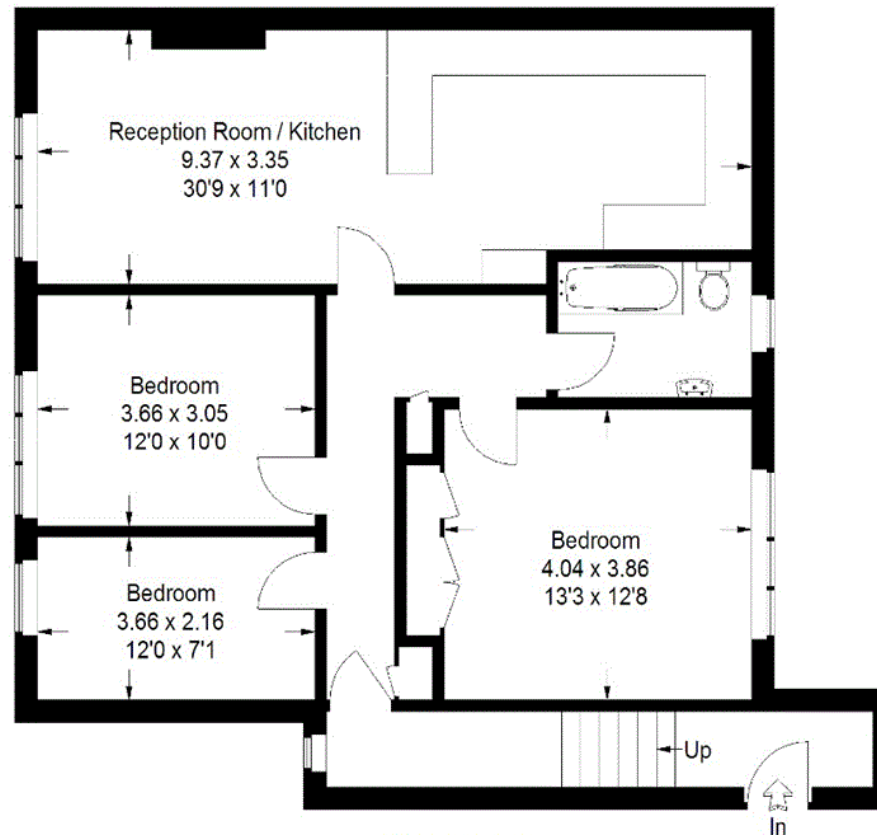
Reception room





Bromet Close

Approximate Gross Internal Area
91.4 sq m / 984 sq ft



First Floor

This plan is for layout guidance only. Not drawn to scale unless stated.
Windows & door openings are approximate. Whilst every care is taken in the preparation of
this plan, please check all dimensions, shapes & compass bearings before making any
decisions reliant upon them. (ID268445)

For clarification, _____



Bedroom

