



Homestead Road Rickmansworth WD3

£1,150 Per Month (Furnished) - 2017-10-10

HAMPTONS
INTERNATIONAL

Beyond your expectations

Homestead Road, Rickmansworth, WD3

£1,150 Per Month (Furnished)

Parking, One large bedroom, Luxury bathroom, Open plan living, Furnished.



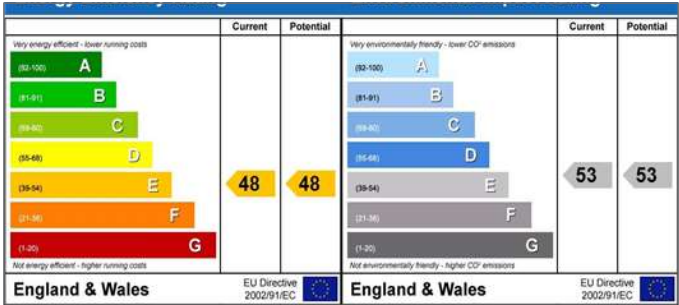
Description

Located just moments from the met line station, a very short stroll to the High street bars and restaurants, this one bedroom apartment was newly built one year ago. This new block is contemporary and very high end and gives the feeling of being in a central London new build at a fraction of the price! The apartment is located on the first floor and has a large entrance hallway with storage, a gorgeous open plan living space with a luxury kitchen area with built in appliances, dining space with a four seater table, living area with two sofa's and ample space for other furnishings. The bedroom is a very good size and feels very airy. Finally there is a spacious & contemporary shower room.

Situation

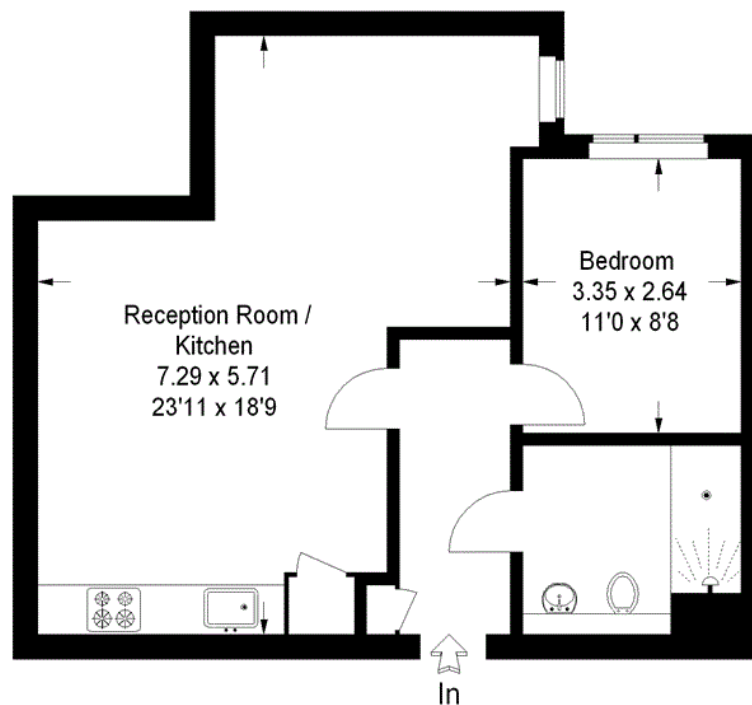
Rickmansworth has a good selection of shops and supermarkets which include Marks and Spencer, Waitrose and Tesco. The Metropolitan and Main Line railway services to Baker Street and Marylebone are available from Rickmansworth Station. The M25 at Junction 18 lies within a short distance, connecting with the national motorway network and airports. The surrounding area provides an outstanding selection of schooling, both state and private. The Aquadrome in Rickmansworth offers two boating

lakes and a network of paths around the park, Grand Union Canal and wildlife sanctuary. A great place to relax is to visit Café in the Park where you can purchase drinks and snacks. A Leisure Centre providing a 25 metre swimming pool and gymnasium is located in Mill End, just outside the town centre.



Swan House

Approximate Gross Internal Area
53.9 sq m / 580 sq ft



First Floor

This plan is for layout guidance only. Not drawn to scale unless stated.

Windows & door openings are approximate.

Whilst every care is taken in the preparation of this plan, please check all dimensions, shapes & compass bearings before making any decisions reliant upon them. (ID283019)

For clarification, _____



20-swan-house-04

