



Gloucester Terrace London

£725 Per Week - Available 24/11/2016

**HAMPTONS**  
INTERNATIONAL

*Beyond your expectations*

*A simply stunning three bedroom apartment situated close to Notting Hill and Paddington Station.*

3 Bedrooms | 2 Bathrooms | Balcony | Unfurnished | Long let | Available in November 2016.

### Description

An attractive first floor apartment in Bayswater, designed and finished to a high standard. Available for long term let, this apartment comprises of an open plan reception room with bespoke kitchen and high ceilings, master bedroom with ensuite shower room, two further double bedrooms and large family bathroom. Available in November on an unfurnished basis.

### Situation

Gloucester Terrace is perfectly situated for easy access to a number of transport links close by. A short walk away you will find the following tube stations: Royal Oak (Hammersmith & City and Circle), Bayswater (District and Circle), Lancaster Gate (Central) and Queensway (Central). Paddington Station is approx 5 min walk away

too, where you will find National Rail links, Heathrow Express, and a selection of Underground Tube links (Hammersmith & City, Circle, District, Bakerloo) Hyde Park is within walking distance, as are the shops and restaurants located on Queensway and trendy Westbourne Grove.

### Furnishing

Unfurnished



### Hamptons Paddington Lettings

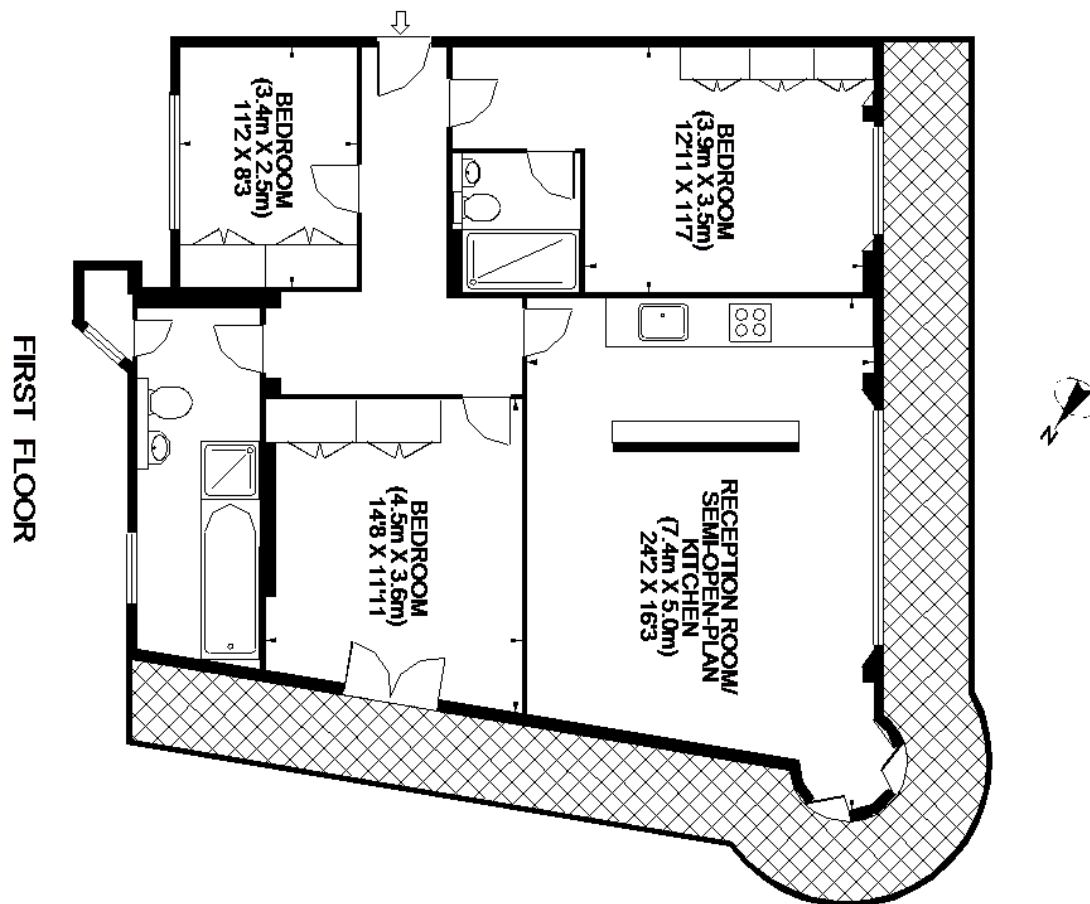
Unit 43, 4 Merchant Square East, Paddington

London W2 1AQ

Tel: 020 7723 0592 - [paddingtonlettings@hamptons-int.com](mailto:paddingtonlettings@hamptons-int.com)

[www.hamptons.co.uk](http://www.hamptons.co.uk)

Currently not available



**For clarification,** we wish to inform prospective purchasers that we have prepared these sales particulars as a general guide. We have not verified permissions, nor carried out a survey, tested the services, appliances and specific fittings. Room sizes are approximate and rounded: they are taken between internal wall surfaces and therefore include cupboards/shelves, etc. Accordingly, they should not be relied upon for carpets and furnishings. It should also be noted that all fixtures and fittings, carpeted, curtains/blinds, kitchen equipment and garden statuary, whether fitted or not, are deemed removable by the vendor unless specifically itemised with these particulars.

### Hamptons Paddington Lettings

Unit 43, 4 Merchant Square East, Paddington

London W2 1AQ

Tel: 020 7723 0592 - paddingtonlettings@hamptons-int.com

[www.hamptons.co.uk](http://www.hamptons.co.uk)

**HAMPTONS**  
INTERNATIONAL

*Beyond your expectations*