



Queens Gardens London W2

£630 Per Week - Available 10/10/2016

HAMPTONS
INTERNATIONAL

Beyond your expectations

A beautifully appointed two bedroom apartment in Queens Gardens.

Top floor apartment | Newly refurbished | Wooden floors | 2 bedrooms | 1 bathroom | Beautifully furnished | Available October 2016.

Description

Call us between our extended opening hours of 6 - 10PM Monday to Thursday to arrange an appointment. A newly refurbished two bedroom apartment situated on the top floor, within a period building on Queens Gardens- a popular Garden square in Bayswater. The apartment boast a large south facing, open plan kitchen reception room with a feature fireplace and wonderful vaulted ceiling, which overlooks a quiet mews. There are two double bedrooms with views across the garden square, each with built in storage, and a newly fitted bathroom in addition. The apartment has wooden floors throughout and is tastefully furnished. Available in October 2016 for long term let.

Situation

Queens Gardens is a very popular garden square in the very heart of Bayswater, close to Hyde Park. It is ideally located within close proximity of the local amenities on Craven Terrace and Queensway, and is within a short walk to Paddington Station (Heathrow Express, National Rail, Underground links), Lancaster Gate (Central line), and Bayswater (Circle and District lines).

Furnishing

Furnished



Hamptons Paddington Lettings

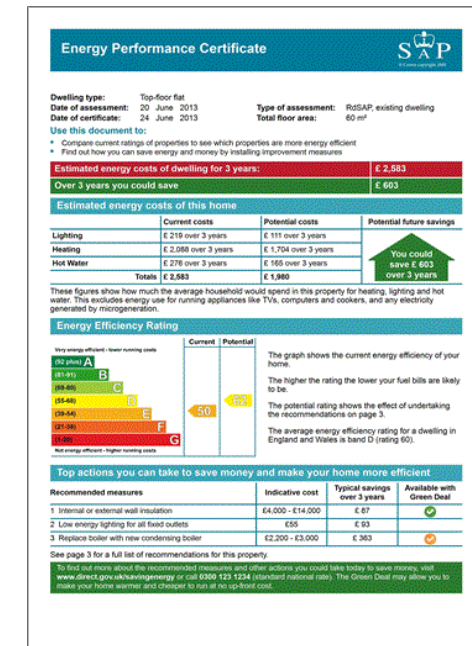
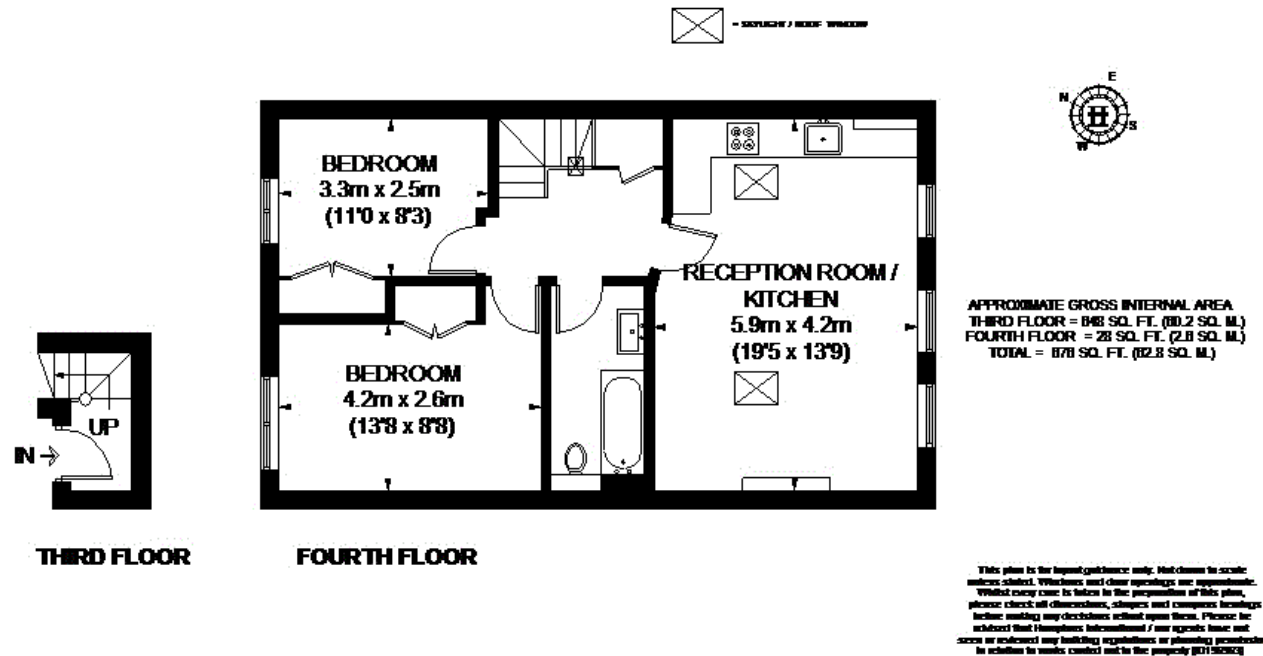
Unit 43, 4 Merchant Square East, Paddington
London W2 1AQ

Tel: 020 7723 0592 - paddingtonlettings@hamptons-int.com

www.hamptons.co.uk

Floorplan

Energy Performance Certificate (EPC)



For clarification, we wish to inform prospective purchasers that we have prepared these sales particulars as a general guide. We have not verified permissions, nor carried out a survey, tested the services, appliances and specific fittings. Room sizes are approximate and rounded: they are taken between internal wall surfaces and therefore include cupboards/shelves, etc. Accordingly, they should not be relied upon for carpets and furnishings. It should also be noted that all fixtures and fittings, carpeted, curtains/blinds, kitchen equipment and garden statuary, whether fitted or not, are deemed removable by the vendor unless specifically itemised with these particulars.

Hamptons Paddington Lettings

Unit 43, 4 Merchant Square East, Paddington

London W2 1AQ

Tel: 020 7723 0592 - paddingtonlettings@hamptons-int.com

www.hamptons.co.uk

HAMPTONS
INTERNATIONAL

Beyond your expectations