



Stanhope Place London W2

£690 Per Week - Available 19/10/2016

HAMPTONS
INTERNATIONAL

Beyond your expectations

A wonderful first floor apartment, with spacious roof terrace located a stones throw from Hyde Park. Available October 2016.

2 bedrooms | 1 bathroom | Furnished | Close to Hyde Park | Available October 2016.

Description

This is a very smart two bedroom property, presented after recent refurbishment. The property features wonderful high ceilings, a separate kitchen and not only a large front facing balcony but also a private rear roof terrace, fully decked, which would be perfect for al fresco entertaining. Available to let on a furnished basis, for long term let in October 2016.

Situation

Perfectly located for easy access into Marylebone and a moments walk to Hyde Park and the local amenities within Connaught Village. The property is conveniently located close to Marble Arch tube station (Central Line) and a short distance from Paddington Station, where you will find further tube links (Bakerloo, District, Circle and

Hammersmith & City), overground links and access to the Heathrow Express service.

Furnishing

Furnished



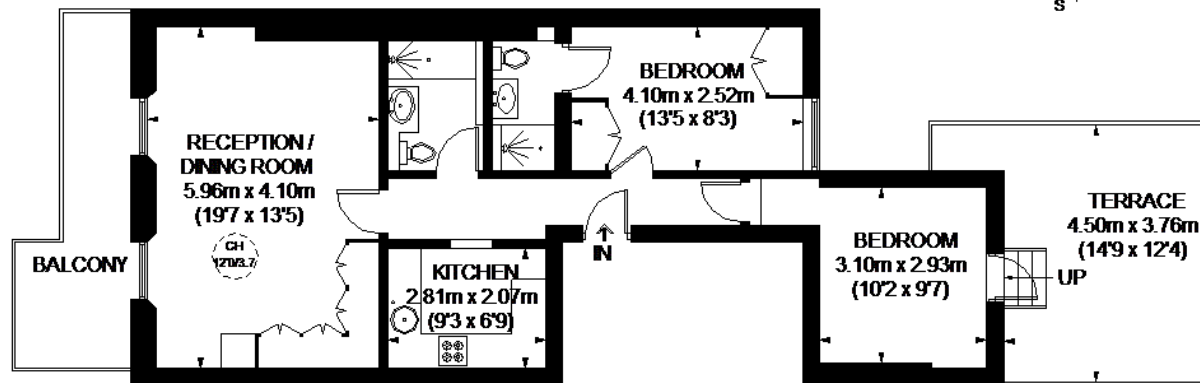
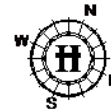
Hamptons Paddington Lettings

Unit 43, 4 Merchant Square East, Paddington
London W2 1AQ

Tel: 020 7723 0592 - paddingtonlettings@hamptons-int.com

www.hamptons.co.uk

STANHOPE PLACE



FIRST FLOOR

This plan is for layout guidance only. Not drawn to scale unless stated. Windows and door openings are approximate. Whilst every care is taken in the preparation of this plan, please check all dimensions, shapes and compass bearings before making any decisions reliant upon them. Please be advised that Hamptons International / our agents have not seen or reviewed any building regulations or planning permission in relation to works carried out to the property (ID214193)

APPROXIMATE GROSS INTERNAL AREA
FIRST FLOOR
715 SQ. FT. (66.4 SQ. M.)

Currently not available

For clarification, we wish to inform prospective purchasers that we have prepared these sales particulars as a general guide. We have not verified permissions, nor carried out a survey, tested the services, appliances and specific fittings. Room sizes are approximate and rounded: they are taken between internal wall surfaces and therefore include cupboards/shelves, etc. Accordingly, they should not be relied upon for carpets and furnishings. It should also be noted that all fixtures and fittings, carpeted, curtains/blinds, kitchen equipment and garden statuary, whether fitted or not, are deemed removable by the vendor unless specifically itemised with these particulars.

Hamptons Paddington Lettings

Unit 43, 4 Merchant Square East, Paddington

London W2 1AQ

Tel: 020 7723 0592 - paddingtonlettings@hamptons-int.com

www.hamptons.co.uk

HAMPTONS
INTERNATIONAL

Beyond your expectations