



Albert Embankment London SE1

£695 Per Week - Available 13/09/2017

**HAMPTONS**  
INTERNATIONAL

*Beyond your expectations*

# Albert Embankment London SE1

£695 Per Week - Available 13/09/2017

**HAMPTONS**  
INTERNATIONAL

*An exceptional three double bedroom apartment with balcony located on the 9th floor with lift in a highly sought after riverside development on Albert Embankment with 24-hour concierge.*

Modern Riverside Development | 3 Double Bedrooms | 2 Bathrooms | 936 Square Feet | 9th Floor With Lift  
| Balcony | Furnished | 24-hour Concierge.

## Description

An exceptional three double bedroom apartment with balcony located on the 9th floor with lift in a highly sought after riverside development on Albert Embankment with 24-hour concierge.

## Furnishing

Furnished



Albert-embankment-001 (5)



Albert-embankment-001 (6)

## Hamptons Pimlico & Westminster Lettings

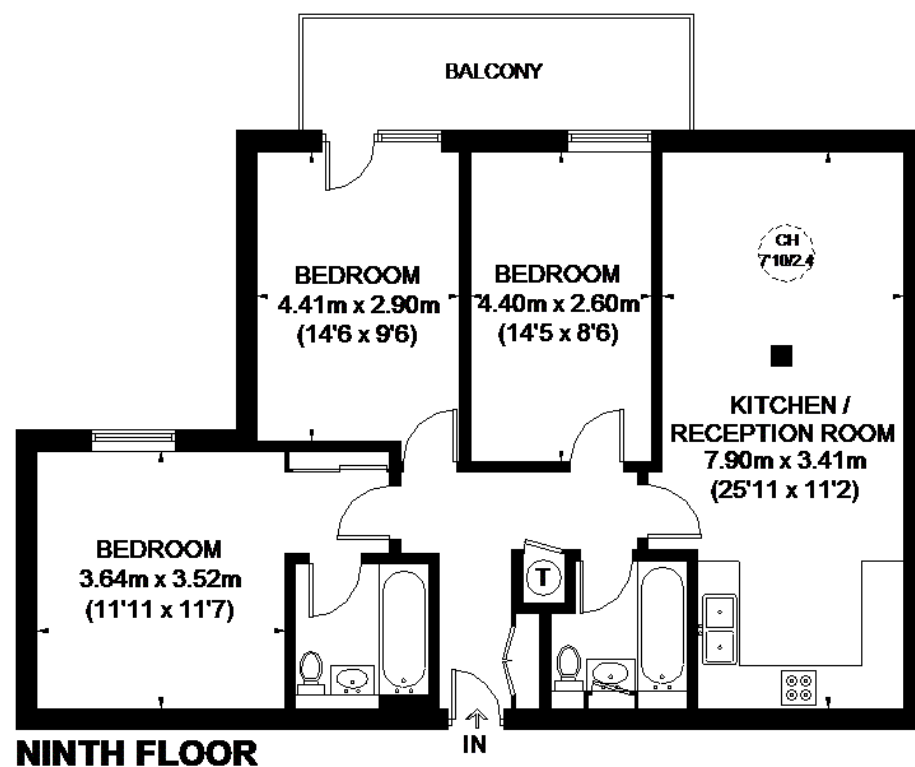
50 Belgrave Road

London SW1V 1RQ

Tel: 020 7834 7316 - [PimlicoLettings@hamptons-int.com](mailto:PimlicoLettings@hamptons-int.com)

[www.hamptons.co.uk](http://www.hamptons.co.uk)

## Floorplan



## ALBERT EMBANKMENT

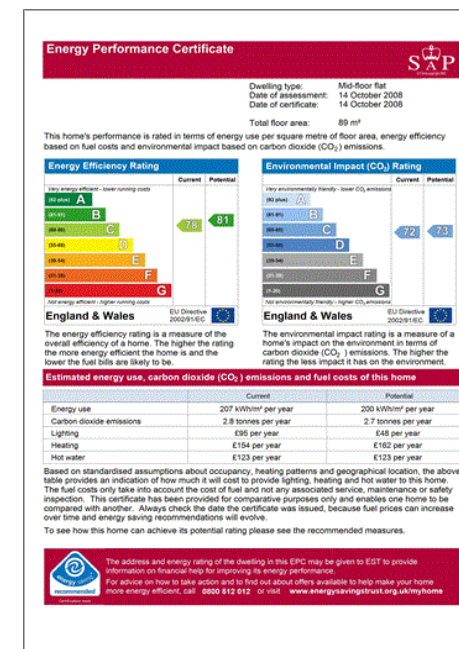


— CEILING HEIGHT

APPROXIMATE GROSS INTERNAL AREA  
914 SQ. FT. (84.9 SQ. M.)

This plan is for layout guidance only. Not drawn to scale unless stated. Windows and door openings are approximate. Vendor's care is taken in the preparation of this plan, please check all dimensions, always and compare bearings before making any decisions related to the plan. Please be advised that all dimensions are approximate and are not intended to be used for any building regulations or planning permission. It is recommended that a surveyor be carried out to the property (02259344).

## Energy Performance Certificate (EPC)



**For clarification,** we wish to inform prospective purchasers that we have prepared these sales particulars as a general guide. We have not verified permissions, nor carried out a survey, tested the services, appliances and specific fittings. Room sizes are approximate and rounded: they are taken between internal wall surfaces and therefore include cupboards/shelves, etc. Accordingly, they should not be relied upon for carpets and furnishings. It should also be noted that all fixtures and fittings, carpeted, curtains/blinds, kitchen equipment and garden statuary, whether fitted or not, are deemed removable by the vendor unless specifically itemised with these particulars.

## Hamptons Pimlico & Westminster Lettings

50 Belgrave Road

London SW1V 1RQ

Tel: 020 7834 7316 - [PimlicoLettings@hamptons-int.com](mailto:PimlicoLettings@hamptons-int.com)

[www.hamptons.co.uk](http://www.hamptons.co.uk)

**HAMPTONS**  
INTERNATIONAL

Beyond your expectations