



Cambridge Street London SW1V

£420 Per Week - Available Now

HAMPTONS
INTERNATIONAL

Beyond your expectations

Immaculately presented one bedroom apartment situated in the heart of the Pimlico grid. The property has a comfortable reception room opening onto the modern kitchen with a dining space.

Conversion Apartment | Reception Room | Kitchen with Dining Area | Bathroom | Juliet Balcony.

Description

Immaculately presented one bedroom apartment situated in the heart of the Pimlico grid. The property has a comfortable reception room opening onto the modern kitchen with a dining space.

Situation

Situated in Pimlico close to amenities (Sainsburys & various other shops, restaurants & bars). Transport links available via Victoria Station (various overland services including Gatwick Express, underground services via Victoria Line, District & Circle Lines).

Furnishing

Furnished



Kitchen



Bedroom

Hamptons Pimlico & Westminster Lettings

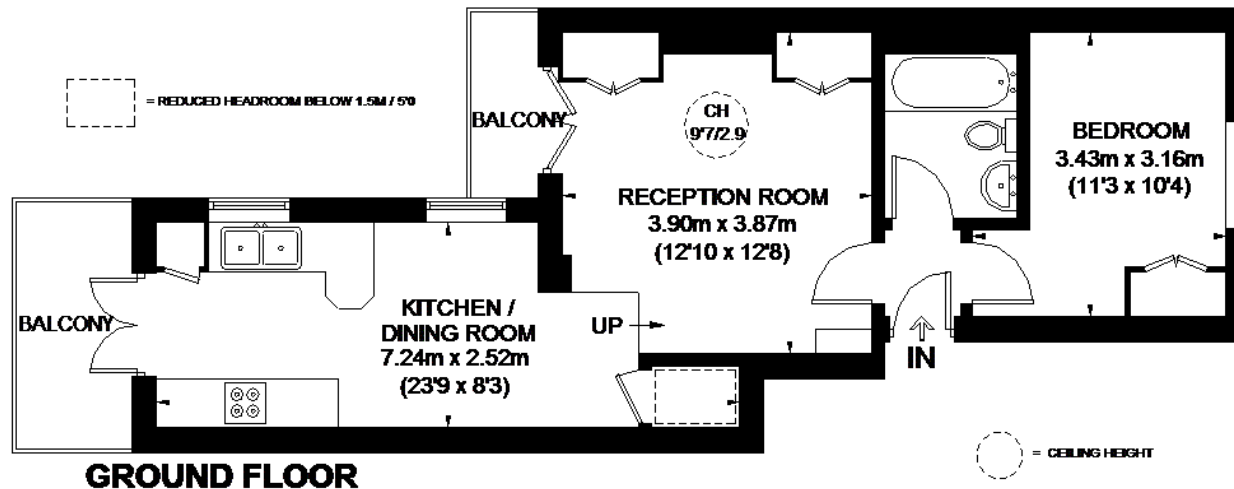
50 Belgrave Road

London SW1V 1RQ

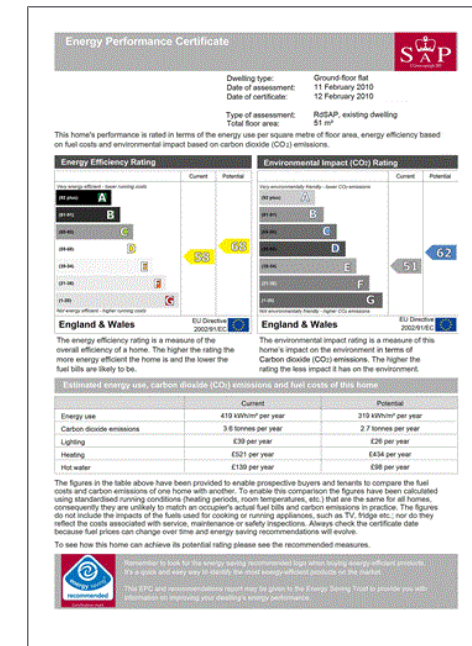
Tel: 020 7834 7316 - PimlicoLettings@hamptons-int.com

www.hamptons.co.uk

CAMBRIDGE STREET



This plan is for layout guidance only. Not drawn to scale unless stated. Windows and door openings are approximate. Whilst every care is taken in the preparation of this plan, please check all dimensions, shapes and compass bearings before making any decisions reliant upon them. Please be advised that Hamptons International / our agents have not seen or reviewed any building regulations or planning permission in relation to works carried out to the property (022843085)



For clarification, we wish to inform prospective purchasers that we have prepared these sales particulars as a general guide. We have not verified permissions, nor carried out a survey, tested the services, appliances and specific fittings. Room sizes are approximate and rounded: they are taken between internal wall surfaces and therefore include cupboards/shelves, etc. Accordingly, they should not be relied upon for carpets and furnishings. It should also be noted that all fixtures and fittings, carpeted, curtains/blinds, kitchen equipment and garden statuary, whether fitted or not, are deemed removable by the vendor unless specifically itemised with these particulars.

Hamptons Pimlico & Westminster Lettings

50 Belgrave Road

London SW1V 1RQ

Tel: 020 7834 7316 - PimlicoLettings@hamptons-int.com

www.hamptons.co.uk

Beyond your expectations