



Premium

Waterside

Grosvenor Road London SW1V

£2,000 Per Week - Available Now

HAMPTONS
INTERNATIONAL

Beyond your expectations

SHORT LET - ALL BILLS INCLUDED An exceptional two bedroom apartment offering circa 1,315 square feet of luxury living space set within this highly sought after riverside development with concierge. Available now on a furnished or unfurnished basis.
Contemporary riverside development | Two double bedrooms | Two en-suite bathrooms | Guest toilet | 1,315 square feet | 4th floor with lift | Wood floors throughout | Balcony | South facing vaulted reception room with direct dual aspect views of the River Thames | Available on a furnished or unfurnished basis | Concierge.

Description

SHORT LET - ALL BILLS INCLUDED An exceptional two bedroom apartment offering circa 1,315 square feet of luxury living space set within this highly sought after riverside development with concierge. Available now on a furnished or unfurnished basis.

Furnishing

Furnished



Belvedere-house-001 (15)



Belvedere-house-001 (11)

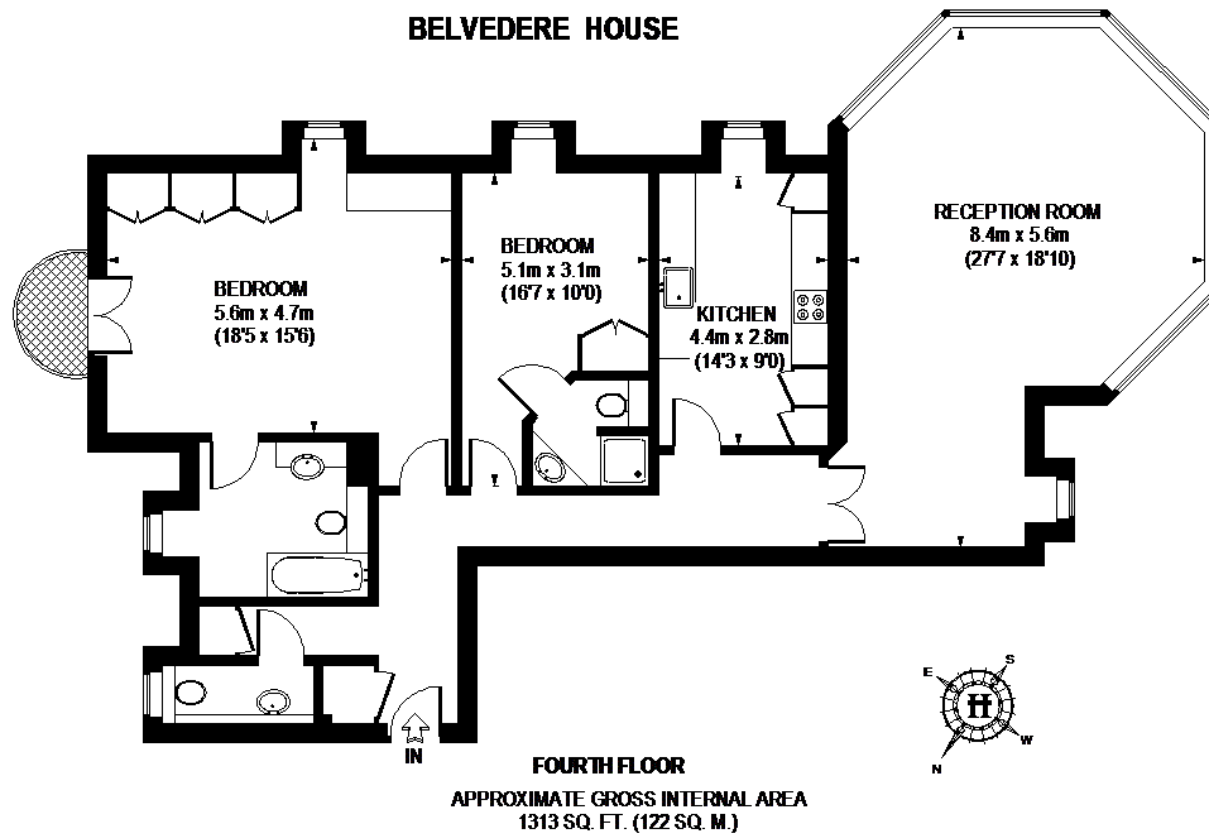
Hamptons Pimlico & Westminster Lettings

50 Belgrave Road

London SW1V 1RQ

Tel: 020 7834 7316 - PimlicoLettings@hamptons-int.com

www.hamptons.co.uk



This plan is for layout guidance only. Not drawn to scale unless stated. Windows & door openings are approximate. Whilst every care is taken in the preparation of this plan, please check all dimensions, shapes & compass bearings before making any decisions reliant upon them. Please be advised that Hamptons International / our agents have not seen or reviewed any building regulations or planning permission in relation to works carried out to the property. (ID69691)

For clarification, we wish to inform prospective purchasers that we have prepared these sales particulars as a general guide. We have not verified permissions, nor carried out a survey, tested the services, appliances and specific fittings. Room sizes are approximate and rounded: they are taken between internal wall surfaces and therefore include cupboards/shelves, etc. Accordingly, they should not be relied upon for carpets and furnishings. It should also be noted that all fixtures and fittings, carpeted, curtains/blinds, kitchen equipment and garden statuary, whether fitted or not, are deemed removable by the vendor unless specifically itemised with these particulars.

Currently not available

Hamptons Pimlico & Westminster Lettings

50 Belgrave Road

London SW1V 1RQ

Tel: 020 7834 7316 - PimlicoLettings@hamptons-int.com

www.hamptons.co.uk

HAMPTONS
INTERNATIONAL

Beyond your expectations