



Premium

St. Georges Square London SW1V

£695 Per Week - Available Now

HAMPTONS
INTERNATIONAL

Beyond your expectations

An exceptional three double bedroom apartment arranged over the top two floors of an attractive period building on this prestigious garden square in Pimlico.

Conversion apartment | 3 double bedrooms | 2 bathrooms | Large reception room | Fully equipped kitchen | 3rd & 4th floor | Utility room | 1,227 square feet | Wood flooring throughout | Idyllic views over-looking St. Georges Square and the London skyline.

Description

An exceptional three double bedroom apartment arranged over the top two floors of an attractive period building on this prestigious garden square in Pimlico. The property offers 1,227 square feet of luxury living space and features wood flooring throughout, masses of natural light, a utility room and idyllic views over-looking St. Georges Square and the London skyline. Available on an unfurnished or part-furnished basis.

Furnishing

Part-furnished



St Georges Square



St Georges Square

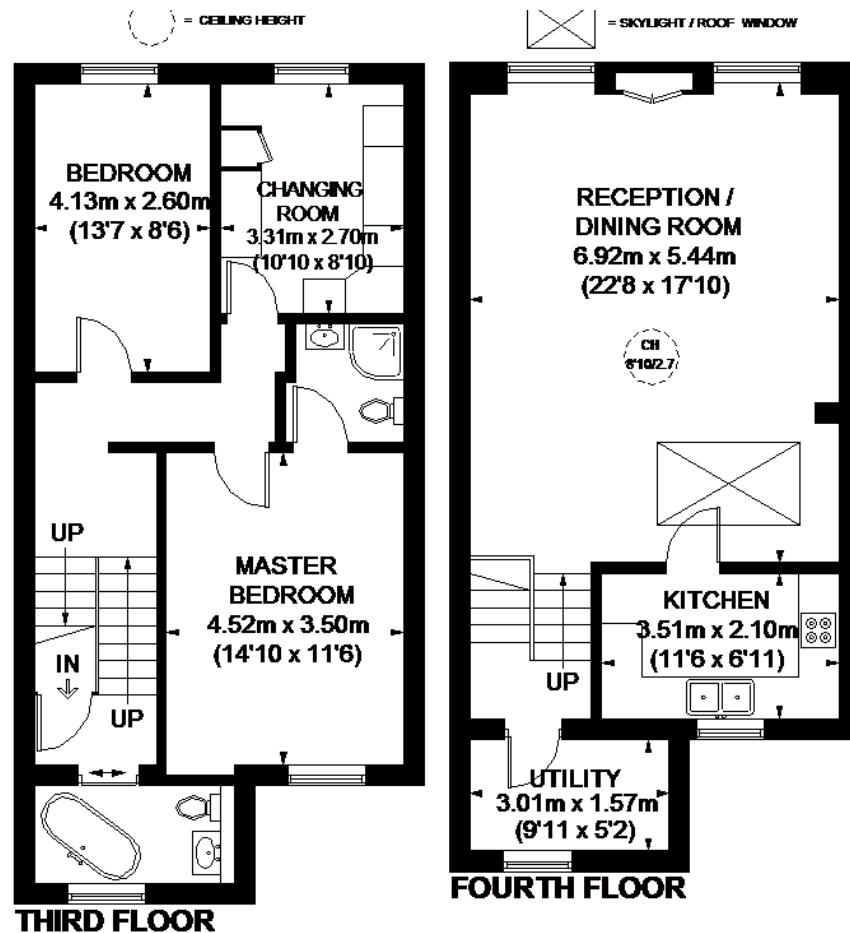
Hamptons Pimlico & Westminster Lettings

50 Belgrave Road

London SW1V 1RQ

Tel: 020 7834 7316 - PimlicoLettings@hamptons-int.com

www.hamptons.co.uk



ST. GEORGE'S SQUARE



APPROXIMATE GROSS INTERNAL AREA
 THIRD FLOOR = 629 SQ. FT. (58.4 SQ. M.)
 FOURTH FLOOR = 598 SQ. FT. (55.6 SQ. M.)
 TOTAL = 1227 SQ. FT. (114 SQ. M.)

This plan is for layout guidance only. Not drawn to scale unless stated. Windows and door openings are approximate. Whilst every care is taken in the preparation of this plan, please check all dimensions, shapes and compass bearings before making any decisions reliant upon them. Please be advised that Hamptons International / our agents have not seen or reviewed any building regulations or planning permission in relation to works carried out to the property (ID277435)

Currently not available

For clarification, we wish to inform prospective purchasers that we have prepared these sales particulars as a general guide. We have not verified permissions, nor carried out a survey, tested the services, appliances and specific fittings. Room sizes are approximate and rounded: they are taken between internal wall surfaces and therefore include cupboards/shelves, etc. Accordingly, they should not be relied upon for carpets and furnishings. It should also be noted that all fixtures and fittings, carpeted, curtains/blinds, kitchen equipment and garden statuary, whether fitted or not, are deemed removable by the vendor unless specifically itemised with these particulars.

Hamptons Pimlico & Westminster Lettings

50 Belgrave Road

London SW1V 1RQ

Tel: 020 7834 7316 - PimlicoLettings@hamptons-int.com

www.hamptons.co.uk

HAMPTONS
INTERNATIONAL

Beyond your expectations