



Premium

Waterside

Riverwalk, Millbank, London, SW1P

£1,100 Per Week - Available Now

**HAMPTONS**  
INTERNATIONAL

*Beyond your expectations*

*An exceptional two double bedroom, two bathroom apartment set within this highly sought after Riverside development in Westminster.*

Brand new riverside development | Two double bedrooms | Two bathrooms | Guest toilet | 6th floor with lift | 1,219 square feet | Balcony with direct river views | Fitness suite | Concierge | 24-hour security | One underground parking space | Available on a furnished or unfurnished basis.

### Description

An exceptional two double bedroom, two bathroom apartment set within this highly sought after Riverside development in Westminster. The property offers 1,219 square feet of brand new, luxury living space and features a large balcony, floor to ceiling windows, bespoke Boffi designer kitchen and comfort cooling. The development offers exclusive private facilities for residents including a fitness suite overlooking the River Thames, valet parking, concierge and 24-hour security. One underground parking space inclusive with the rental. Available now on a furnished or unfurnished basis.

### Furnishing

Furnished



Balcony



Kitchen

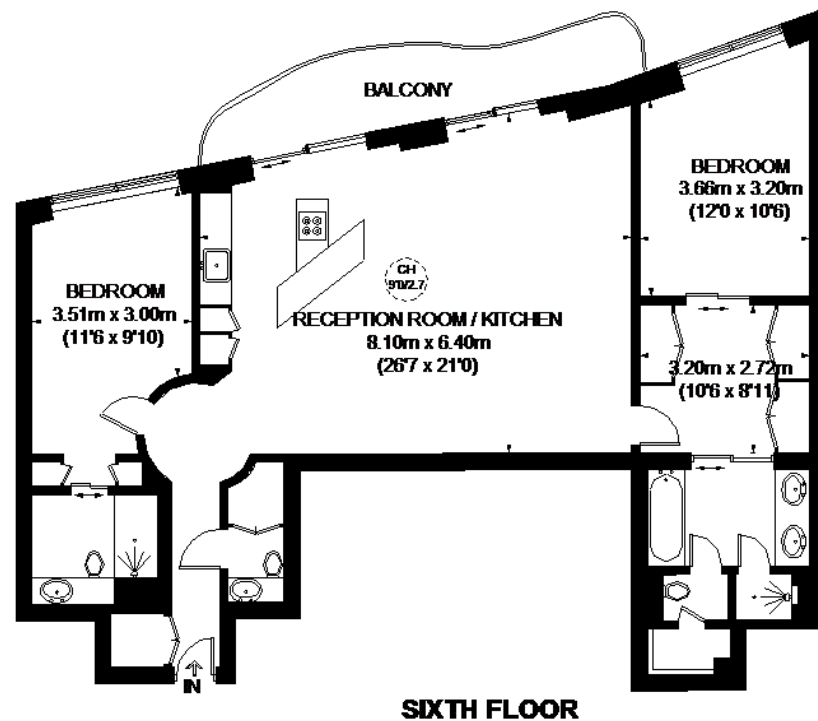
### Hamptons Pimlico & Westminster Lettings

50 Belgrave Road

London SW1V 1RQ

Tel: 020 7834 7316 - [PimlicoLettings@hamptons-int.com](mailto:PimlicoLettings@hamptons-int.com)

[www.hamptons.co.uk](http://www.hamptons.co.uk)



**RIVERWALK**



APPROXIMATE GROSS INTERNAL AREA  
1219 SQ. FT. (113.3 SQ. M.)



This plan is for layout guidance only. Not drawn to scale unless stated. Windows and door openings are approximate. Whilst every care is taken in the preparation of this plan, please check all dimensions, shapes and equipment details before making any decisions related to them. Please be advised that Hamptons International / our agents have not seen or reviewed any building regulations or planning permission in relation to works carried out to the property (0226904)

Currently not available

**For clarification,** we wish to inform prospective purchasers that we have prepared these sales particulars as a general guide. We have not verified permissions, nor carried out a survey, tested the services, appliances and specific fittings. Room sizes are approximate and rounded: they are taken between internal wall surfaces and therefore include cupboards/shelves, etc. Accordingly, they should not be relied upon for carpets and furnishings. It should also be noted that all fixtures and fittings, carpeted, curtains/blinds, kitchen equipment and garden statuary, whether fitted or not, are deemed removable by the vendor unless specifically itemised with these particulars.

**Hamptons Pimlico & Westminster Lettings**

50 Belgrave Road

London SW1V 1RQ

Tel: 020 7834 7316 - PimlicoLettings@hamptons-int.com

[www.hamptons.co.uk](http://www.hamptons.co.uk)

**HAMPTONS**  
INTERNATIONAL

*Beyond your expectations*