



Clevedon Road Twickenham TW1

£2,600 Per Month - Available 17/10/2016

**HAMPTONS**  
INTERNATIONAL

*Beyond your expectations*



# Clevedon Road Twickenham TW1

£2,600 Per Month - Available 17/10/2016

**HAMPTONS**  
INTERNATIONAL

*A beautifully presented two bedroom apartment located in a prestigious, riverside development.*

Apartment | Reception | Kitchen | 2 bedrooms | 2 bathrooms | Patio | Underground Parking | 24 hour concierge | Communal gym.

## Description

A beautifully presented two bedroom apartment located in a prestigious, riverside development. The property benefits from a large reception room with wood floors, fully fitted kitchen with modern appliances, two well proportioned bedrooms, two bathrooms, one of which is en-suite and a private patio. The property further benefits from underground parking, 24 hour concierge and use of a communal gym and is a short walk from Richmond town centre and mainline station.

## Furnishing

Unfurnished



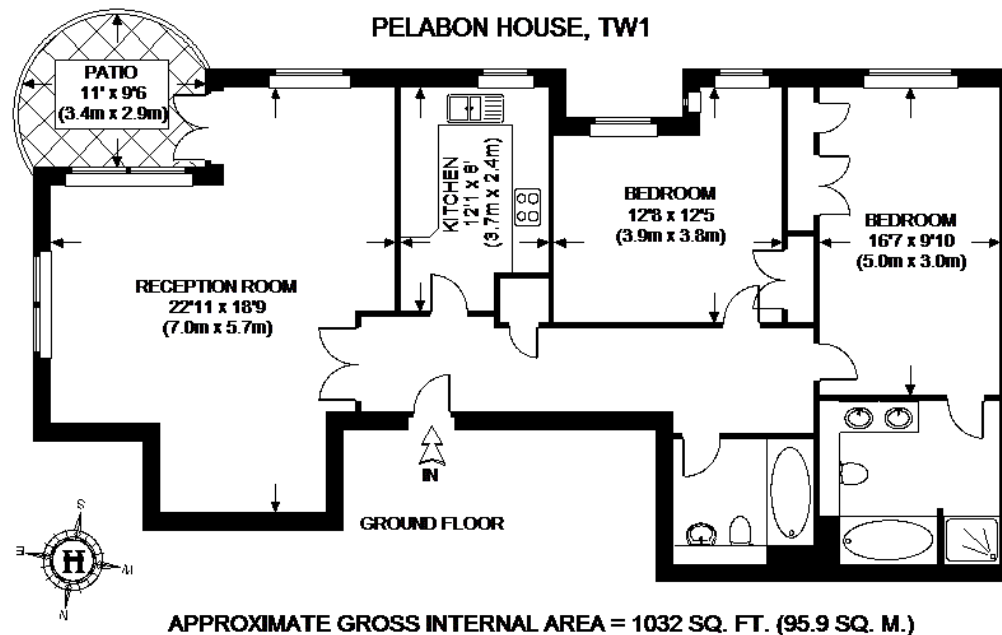
## Hamptons Richmond Lettings

8 The Quadrant

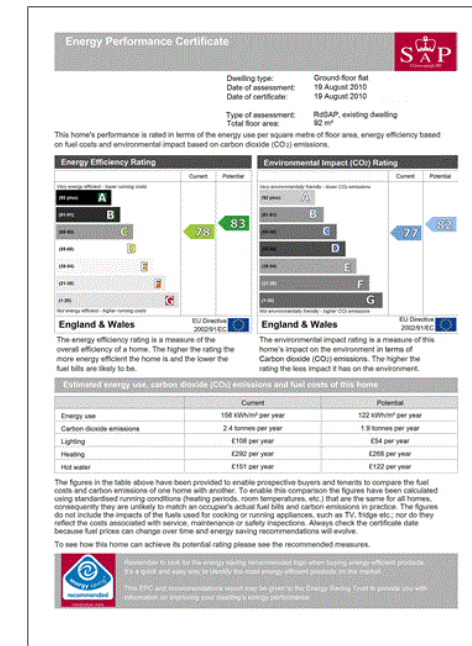
Richmond TW9 1BP

Tel: 020 8940 1199 - richmondlettings@hamptons-int.com

[www.hamptons.co.uk](http://www.hamptons.co.uk)



This plan is for layout guidance only. Not drawn to scale unless stated. Windows & door openings are approximate. Whilst every care is taken in the preparation of this plan, please check all dimensions, shapes & compass bearings before making any decisions reliant upon them. Please be advised that Hamptons International / our agents have not seen or reviewed any building regulations or planning permission in relation to works carried out to the property.



**For clarification,** we wish to inform prospective purchasers that we have prepared these sales particulars as a general guide. We have not verified permissions, nor carried out a survey, tested the services, appliances and specific fittings. Room sizes are approximate and rounded: they are taken between internal wall surfaces and therefore include cupboards/shelves, etc. Accordingly, they should not be relied upon for carpets and furnishings. It should also be noted that all fixtures and fittings, carpeted, curtains/blinds, kitchen equipment and garden statuary, whether fitted or not, are deemed removable by the vendor unless specifically itemised with these particulars.