



The Quadrant Richmond TW9

£2,300 Per Month - Available Now

**HAMPTONS**  
INTERNATIONAL

*Beyond your expectations*

# The Quadrant Richmond TW9

£2,300 Per Month - Available Now

**HAMPTONS**  
INTERNATIONAL

*An immaculate one bedroom apartment within a new development situated in the heart of Richmond town centre moments from Richmond Green and The River Thames.*

Open Plan Kitchen Reception Room | Double Bedroom | Modern Bathroom | Central Richmond.

## Description

An immaculate one bedroom apartment within a new development situated in the heart of Richmond town centre moments from Richmond Green and The River Thames. The property has been finished to an extremely high specification with Cat 5 wiring through out and comprises a large and light reception room with oak wood flooring, a stylish custom designed kitchen with state of the art appliances, a spacious master bedroom with built in storage and a large modern bathroom.

## Situation

The property is ideally situated in the heart of Richmond moments from the many shops, restaurants and excellent transport links at Richmond Train Station.

## Furnishing

Furnished



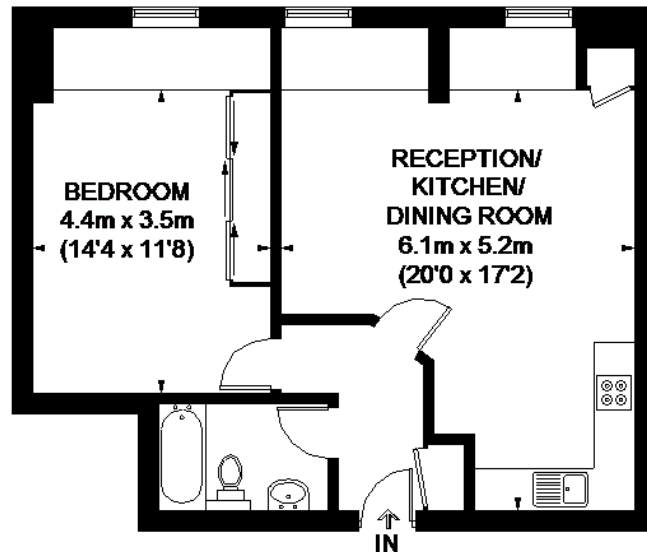
## Hamptons Richmond Lettings

8 The Quadrant

Richmond TW9 1BP

Tel: 020 8940 1199 - richmondlettings@hamptons-int.com

[www.hamptons.co.uk](http://www.hamptons.co.uk)



### THIRD FLOOR

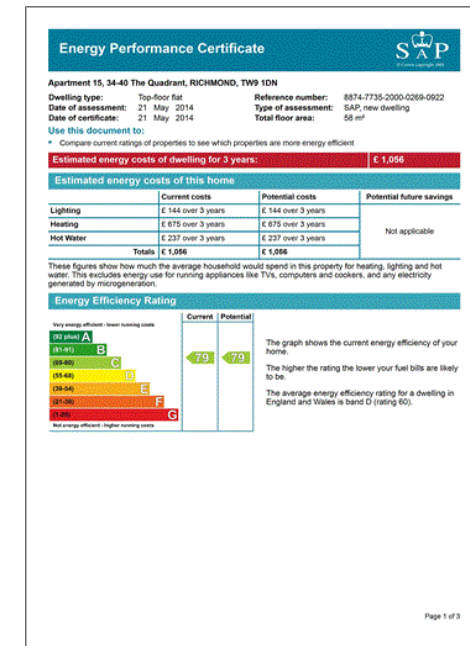
## THE QUADRANT



**APPROXIMATE GROSS INTERNAL AREA**  
**634 SQ. FT. (58.9 SQ. M.)**

This plan is for loquet guidance only. Not drawn to scale.  
 Unless every care is taken in the preparation of this plan,  
 please check all dimensions, shapes and component locations  
 before making any decisions reliant upon them. Please be  
 advised that Hampshire International / our agents have not  
 seen or released any building regulations or planning permission  
 in relation to works carried out to the property (0152613)

## Energy Performance Certificate (EPC)



**For clarification,** we wish to inform prospective purchasers that we have prepared these sales particulars as a general guide. We have not verified permissions, nor carried out a survey, tested the services, appliances and specific fittings. Room sizes are approximate and rounded: they are taken between internal wall surfaces and therefore include cupboards/shelves, etc. Accordingly, they should not be relied upon for carpets and furnishings. It should also be noted that all fixtures and fittings, carpeted, curtains/blinds, kitchen equipment and garden statuary, whether fitted or not, are deemed removable by the vendor unless specifically itemised with these particulars.

## Hamptons Richmond Lettings

## 8 The Quadrant

Richmond TW9 1BP

Tel: 020 8940 1199 - [richmondlettings@hamptons-int.com](mailto:richmondlettings@hamptons-int.com)

[www.hamptonshomes.co.uk](http://www.hamptonshomes.co.uk)



**HAMPTONS**  
INTERNATIONAL

## Beyond your expectations