



Sloane Avenue London SW3

£595 Per Week - Available 14/04/2017

HAMPTONS
INTERNATIONAL

Beyond your expectations

Situated on the second floor of this period building this newly refurbished, unusually large one bedroom flat has an abundance of light and storage.

Description

This gorgeous one bed roomed apartment in a beautiful period building which has been completely refurbished throughout. The flat offers an unusually large and stylish reception room, a smart kitchen and a large bedroom with a walk-in-wardrobe and en-suite bathroom. The flat has ample storage throughout in the reception, bathroom and the bedroom.

West End

Furnishing

Furnished

Situation

Sloane Avenue is moments from the fashionable Kings Road with all it's bars, restaurants and shops. You are also within a short walk of Walton Street, Brompton and Fulham Road. Sloane Square is the nearest underground station which is on the district and circle lines. There are also numerous buses that run to The City and The



Hamptons Sloane Square Lettings

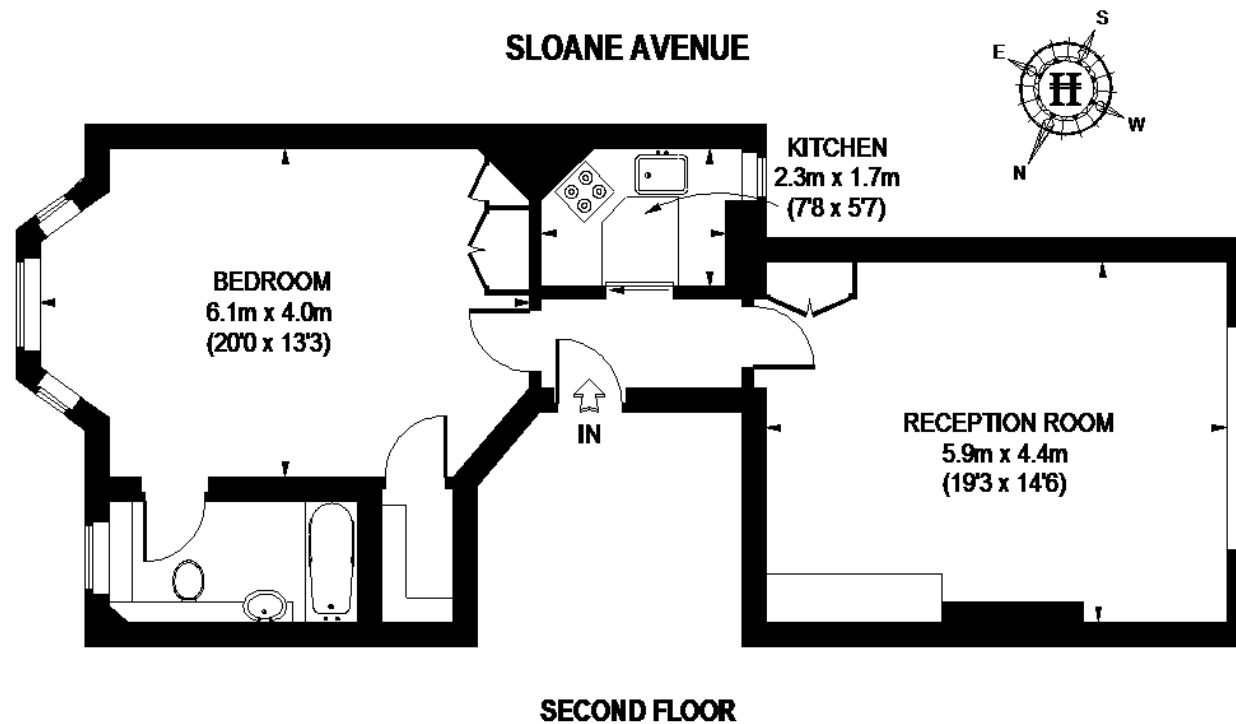
7 Lower Sloane Street, Sloane Square

London SW1W 8AH

Tel: 020 7824 8242 - sloanesquarelettings@hamptons-int.com

www.hamptons.co.uk

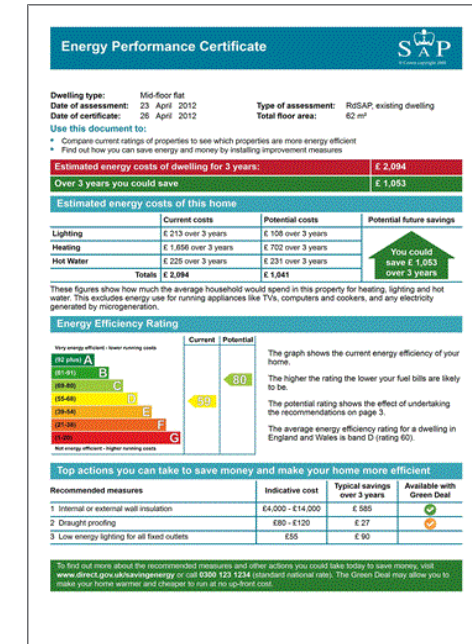
Floorplan



APPROXIMATE GROSS INTERNAL AREA = 689 SQ. FT. (64 SQ. M.)

This plan is for layout guidance only. Not drawn to scale unless stated. Windows & door openings are approximate. Whilst every care is taken in the preparation of this plan, please check all dimensions, shapes & compass bearings before making any decisions reliant upon them. Please be advised that Hamptons International / our agents have not seen or reviewed any building regulations or planning permission in relation to works carried out to the property. (ID49363)

Energy Performance Certificate (EPC)



For clarification, we wish to inform prospective purchasers that we have prepared these sales particulars as a general guide. We have not verified permissions, nor carried out a survey, tested the services, appliances and specific fittings. Room sizes are approximate and rounded: they are taken between internal wall surfaces and therefore include cupboards/shelves, etc. Accordingly, they should not be relied upon for carpets and furnishings. It should also be noted that all fixtures and fittings, carpeted, curtains/blinds, kitchen equipment and garden statuary, whether fitted or not, are deemed removable by the vendor unless specifically itemised with these particulars.

Hamptons Sloane Square Lettings

7 Lower Sloane Street, Sloane Square

London SW1W 8AH

Tel: 020 7824 8242 - sloanesquarelettings@hamptons-int.com

www.hamptons.co.uk

HAMPTONS
INTERNATIONAL

Beyond your expectations