



Eaton Terrace London SW1W

£3,500 Per Week - Available Now

HAMPTONS
INTERNATIONAL

Beyond your expectations

A beautifully presented four bedroom townhouse that has recently been refurbished and interior designed to a very high standard. Benefiting from a large patio garden, two brand new bathrooms and stunning eat-in kitchen. Offered unfurnished.

4 Bedroom House | 4 Bathrooms | Landscaped Garden | Moments from Sloane Square | Unfurnished.

Description

A beautifully presented four bedroom townhouse that has recently been refurbished and interior designed to a very high standard. The house is entered on the raised ground floor comprising entrance hallway and double reception room. The large bright eat-in kitchen is found on the lower floor along with a utility room, bedroom with brand new en suite shower room and access to a 40ft landscaped garden. The first floor offers a guest cloak room and bright double reception room. The master bedroom can be found on the second floor with excellent built in storage and large ensuite bathroom. The top floor offers two further bedrooms, one with a brand new ensuite shower room and walk in wardrobe and a further shower room. Offered unfurnished.

Situation

Eaton Terrace is conveniently located close to the fashionable Elizabeth Street and the international amenities of Knightsbridge, Sloane Square and Belgravia. Sloane Square underground station is within easy walking distance.

Furnishing

Unfurnished



Reception Room



Kitchen

Hamptons Sloane Square Lettings

7 Lower Sloane Street, Sloane Square

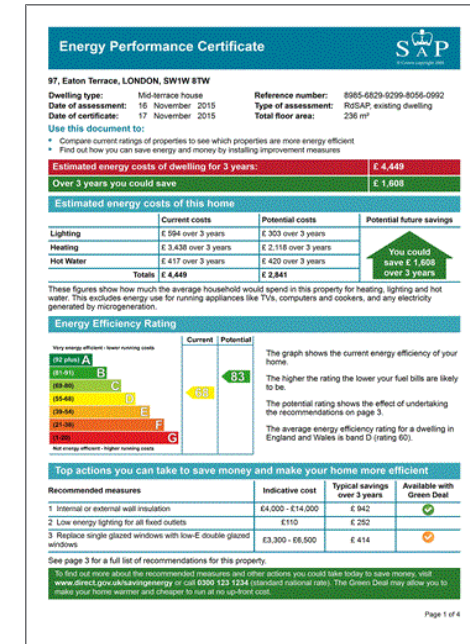
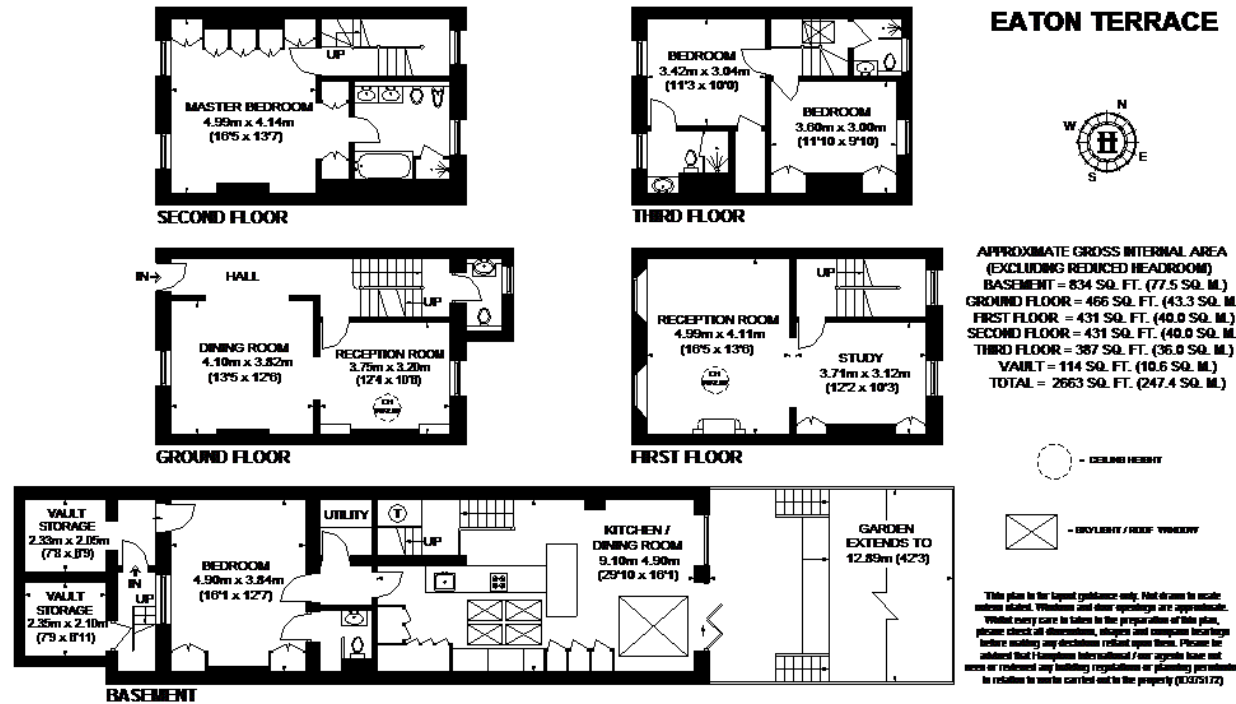
London SW1W 8AH

Tel: 020 7824 8242 - sloanesquarelettings@hamptons-int.com

www.hamptons.co.uk

Floorplan

Energy Performance Certificate (EPC)



For clarification, we wish to inform prospective purchasers that we have prepared these sales particulars as a general guide. We have not verified permissions, nor carried out a survey, tested the services, appliances and specific fittings. Room sizes are approximate and rounded: they are taken between internal wall surfaces and therefore include cupboards/shelves, etc. Accordingly, they should not be relied upon for carpets and furnishings. It should also be noted that all fixtures and fittings, carpeted, curtains/blinds, kitchen equipment and garden statuary, whether fitted or not, are deemed removable by the vendor unless specifically itemised with these particulars.

Hamptons Sloane Square Lettings

7 Lower Sloane Street, Sloane Square

London SW1W 8AH

Tel: 020 7824 8242 - sloanesquarelettings@hamptons-int.com

www.hamptons.co.uk

HAMPTONS
INTERNATIONAL

Beyond your expectations