



Culford Gardens London SW3

£1,600 Per Week - Available Now

HAMPTONS
INTERNATIONAL

Beyond your expectations

A three bedroom apartment over 2,000 sq ft located moments from Sloane Square. The property further benefits from it's own ground floor entrance and communal garden access.

Three Bedrooms | Three Bathrooms | Eat-in-Kitchen | Dining Room | Communal Garden.

Description

An over 2,000 Sqft, three bedroom three bathroom apartment located moments from Sloane Square. The property further benefits from it's own ground floor entrance, eat-in-kitchen, dining room, hardwood floors in the reception, and communal garden access. The closest Underground is Sloane Square District and Circle lines

Furnishing

Unfurnished



Reception Room



Kitchen

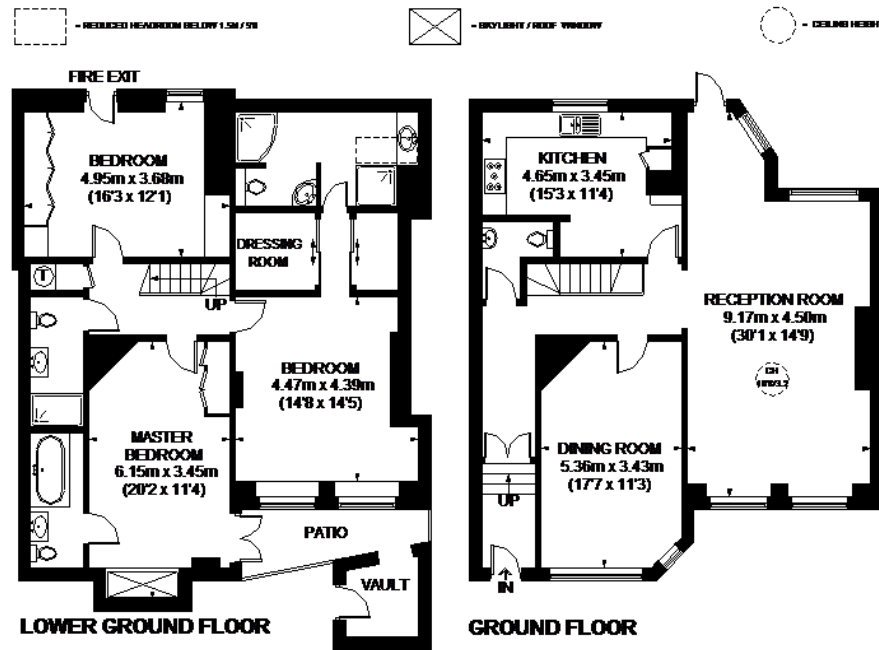
Hamptons Sloane Square Lettings

7 Lower Sloane Street, Sloane Square

London SW1W 8AH

Tel: 020 7824 8242 - sloanesquarelettings@hamptons-int.com

www.hamptons.co.uk

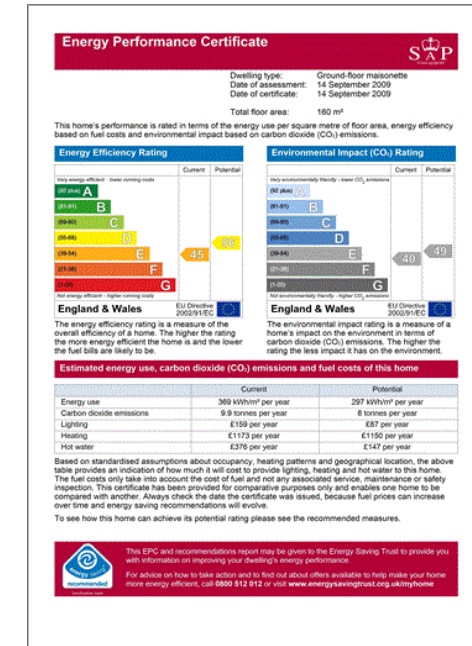


CULFORD GARDENS



**APPROXIMATE GROSS INTERNAL AREA
(EXCLUDING REDUCED HEADROOM)**
LOWER GROUND FLOOR = 1028 SQ. FT. (95.5 SQ. M.)
GROUND FLOOR = 967 SQ. FT. (89.8 SQ. M.)
VAULT = 35 SQ. FT. (3.3 SQ. M.)
REDUCED HEADROOM
10 SQ. FT. (0.9 SQ. M.)
TOTAL = 2040 SQ. FT. (189.5 SQ. M.)

*This plan is for layout guidance only. Not drawn to scale.
 Measure all dimensions and show openings are approximate.
 Whilst every care is taken in the preparation of this plan,
 please check all dimensions, heights and compare before
 before making any decisions reliant upon them. Please be
 advised that all dimensions are approximate and are not
 to be used for any building regulations or planning purposes
 in relation to work carried out to the property (02080000000)



For clarification, we wish to inform prospective purchasers that we have prepared these sales particulars as a general guide. We have not verified permissions, nor carried out a survey, tested the services, appliances and specific fittings. Room sizes are approximate and rounded: they are taken between internal wall surfaces and therefore include cupboards/shelves, etc. Accordingly, they should not be relied upon for carpets and furnishings. It should also be noted that all fixtures and fittings, carpeted, curtains/blinds, kitchen equipment and garden statuary, whether fitted or not, are deemed removable by the vendor unless specifically itemised with these particulars.

Hamptons Sloane Square Lettings

7 Lower Sloane Street, Sloane Square

London SW1W 8AH

Tel: 020 7824 8242 - sloanesquarelettings@hamptons-int.com

www.hamptons.co.uk

HAMPTONS
INTERNATIONAL

Beyond your expectations