



Wingate Square London SW4

£535 per week - Available 06/11/2014

**HAMPTONS**  
INTERNATIONAL

*Beyond your expectations*

*A truly fabulous two double bedroom / two bathroom flat in a stunning new development in the heart of The Old Town. The flat has views over the common and underground parking*

---

## Description

A truly fabulous two double bedroom / two bathroom flat in a stunning new development in the heart of The Old Town. The flat has views over the common and underground parking

## Furnishing

Furnished



Open Living Area



Kitchen

---

## Hamptons Clapham Lettings

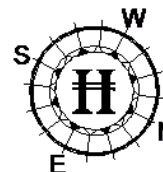
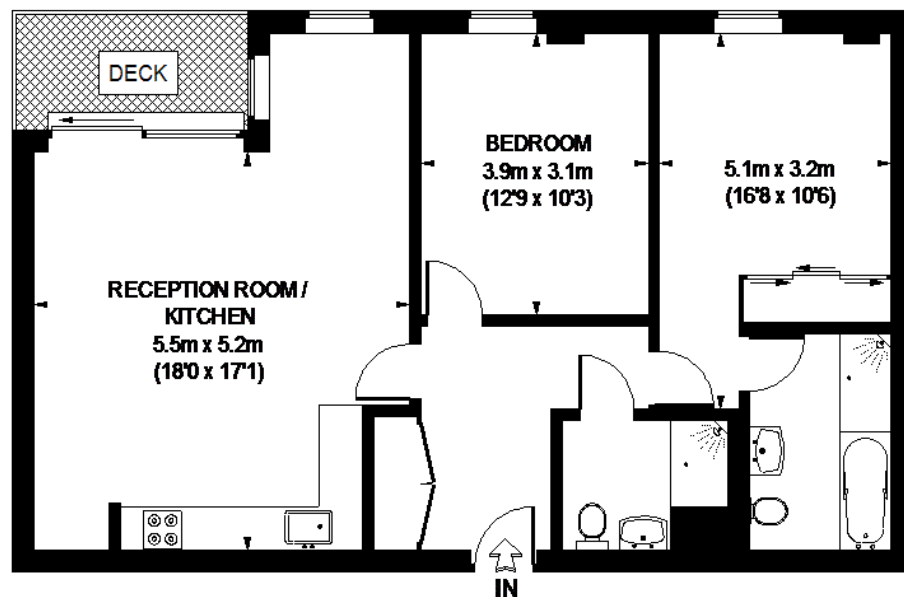
27-31 The Pavement, Clapham

London SW4 0JE

Tel: 020 7627 5888 - [claphamlettings@hamptons-int.com](mailto:claphamlettings@hamptons-int.com)

[www.hamptons.co.uk](http://www.hamptons.co.uk)

## WINGATE SQUARE



Currently not available

### THIRD FLOOR

APPROXIMATE GROSS INTERNAL AREA = 862 SQ. FT. (80.1 SQ. M.)

**This plan is for layout guidance only. Not drawn to scale unless stated. Windows & door openings are approximate. Whilst every care is taken in the preparation of this plan, please check all dimensions, shapes & compass bearings before making any decisions reliant upon them.**

**Please be advised that Hamptons International / our agents have not seen or reviewed any building regulations or planning permission in relation to works carried out to the property. (ID 128320)**

**For clarification,** we wish to inform prospective purchasers that we have prepared these sales particulars as a general guide. We have not verified permissions, nor carried out a survey, tested the services, appliances and specific fittings. Room sizes are approximate and rounded: they are taken between internal wall surfaces and therefore include cupboards/shelves, etc. Accordingly, they should not be relied upon for carpets and furnishings. It should also be noted that all fixtures and fittings, carpeted, curtains/blinds, kitchen equipment and garden statuary, whether fitted or not, are deemed removable by the vendor unless specifically itemised with these particulars.

### Hamptons Clapham Lettings

27-31 The Pavement, Clapham

London SW4 0JE

Tel: 020 7627 5888 - [claphamlettings@hamptons-int.com](mailto:claphamlettings@hamptons-int.com)

[www.hamptons.co.uk](http://www.hamptons.co.uk)

**HAMPTONS**  
INTERNATIONAL

*Beyond your expectations*