



Waterside

Ditton Reach, Thames Ditton, KT7

£2,700 Per Month - Available 26/01/2019



Ditton Reach, Thames Ditton, KT7

£2,700 Per Month - Available 26/01/2019



Four Bedrooms | Two Reception Rooms | Two Bathrooms | River Views | EPC C.

Situation

Occupying a prime riverside location, the property leads directly onto the River and is within easy reach of Thames Ditton village, Surbiton high street and Kingston Upon Thames. It is conveniently located near to an extensive shopping and recreational facilities and local schools. The Thames Sailing club and Raven Ait are within close proximity.

Furnishing

Unfurnished



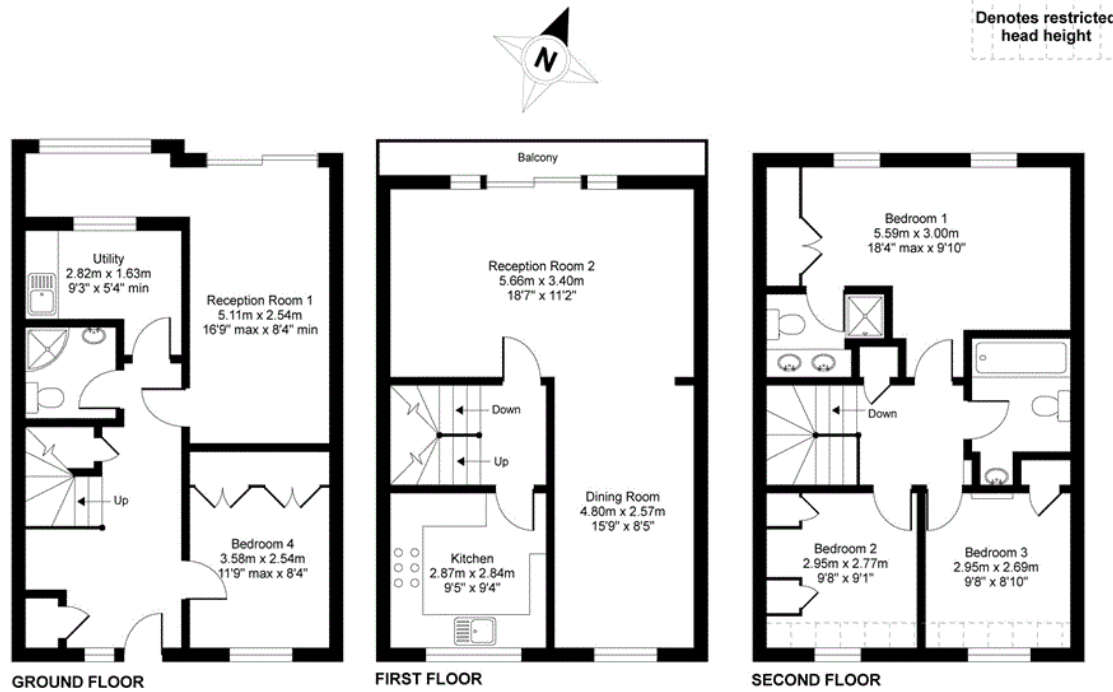
Hamptons Esher Lettings

51 High Street

Esher KT10 9RQ

Tel: 01372 466646 - esherlettings@hamptons-int.com

www.hamptons.co.uk

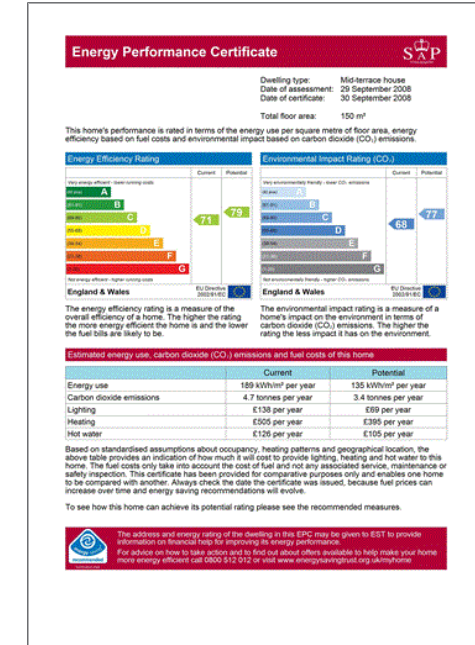


Ditton Reach, Thames Ditton, KT7

APPROX. GROSS INTERNAL FLOOR AREA 1559 SQ FT 144.8 SQ METRES (EXCLUDES RESTRICTED HEAD HEIGHT)

Whilst every attempt has been made to ensure the accuracy of the floor plan contained here, measurements of doors, windows and rooms are approximate and no responsibility is taken for any error, omission or misstatement. These plans are for representation purposes only as defined by RICS Code of Measuring Practice and should be used as such by any prospective purchaser. Specifically no guarantee is given on the total square footage of the property if quoted on this plan. Any figure given is for initial guidance only and should not be relied on as a basis of valuation.

Copyright nichecom.co.uk 2016 Produced for Hamptons Country Lettings REF : 140999



For clarification, we wish to inform prospective tenants that we have prepared these particulars as a general guide. We have not verified permissions, nor carried out a survey, tested the services, appliances and specific fittings. Room sizes are approximate and rounded: they are taken between internal wall surfaces and therefore include cupboards/shelves, etc. Accordingly, they should not be relied upon for carpets and furnishings. It should also be noted that all fixtures and fittings, carpeted, curtains/blinds, kitchen equipment and garden statuary, whether fitted or not, are deemed removable by the landlord unless specifically itemised with these particulars.

Hamptons Esher Lettings

51 High Street

Esher KT10 9RQ

Tel: 01372 466646 - esherlettings@hamptons-int.com

www.hamptons.co.uk

