



The Pulse South Hampstead NW6

£595 Per Week - Available 21/10/2016

**HAMPTONS**  
INTERNATIONAL

*Beyond your expectations*

# The Pulse South Hampstead NW6

£595 Per Week - Available 21/10/2016

**HAMPTONS**  
INTERNATIONAL

*A modern two bedroom two bathroom apartment to let. Situated in a modern development located within walking distance of Finchley Road's local amenities and both underground and overground stations. The property comprises a spacious open plan kitchen and reception, master bedroom with ensuite bathroom, second double bedroom and a second bathroom. Finished with neutral décor and wood floors throughout. Benefits include 24 hr porter, lift and a private balcony. Offered furnished and available from mid October 2016.*

## Description

A modern two bedroom two bathroom apartment to let. Situated in a modern development located within walking distance of Finchley Road's local amenities and both underground and overground stations. The property comprises a spacious open plan kitchen and reception, master bedroom with ensuite bathroom, second double bedroom and a second bathroom. Finished with neutral décor and wood floors throughout. Benefits include 24 hr porter, lift and a private balcony. Offered furnished and available from mid October 2016.

## Furnishing

Furnished



Kitchen



Exterior

## Hamptons Hampstead Lettings

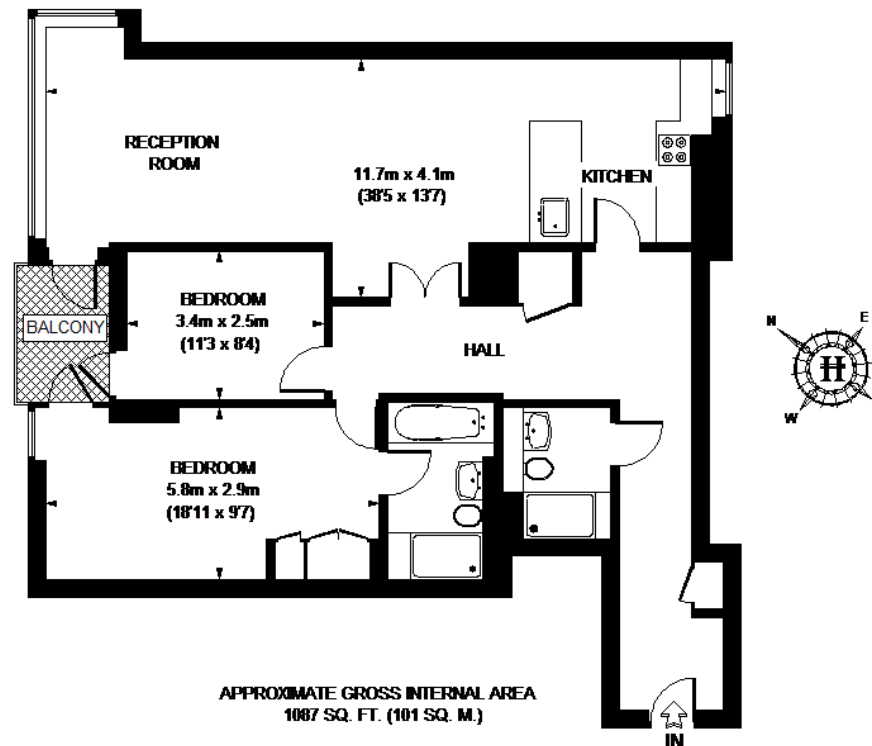
9 Heath Street, Hampstead

London NW3 6TP

Tel: 020 7431 4462 - [HampsteadLettings@hamptons-int.com](mailto:HampsteadLettings@hamptons-int.com)

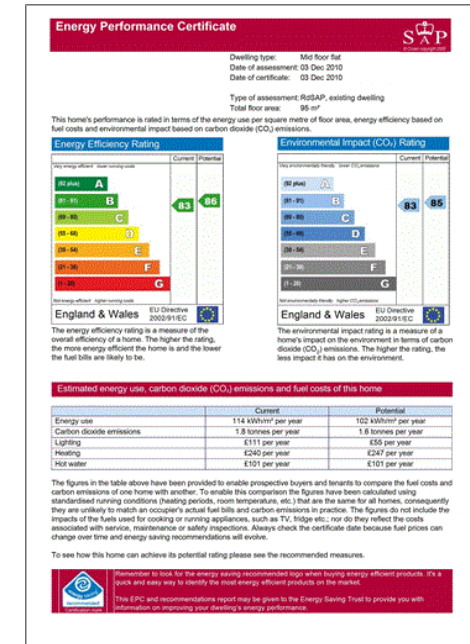
[www.hamptons.co.uk](http://www.hamptons.co.uk)

## THE PULSE



This plan is for layout guidance only. Not drawn to scale unless stated. Windows & door openings are approximate. Whilst every care is taken in the preparation of this plan, please check all dimensions, shapes & compass bearings before making any decisions reliant upon them. Please be advised that Hamptons International / our agents have not seen or reviewed any building regulations or planning permission in relation to works carried out to the property. (ID62550)

**For clarification**, we wish to inform prospective purchasers that we have prepared these sales particulars as a general guide. We have not verified permissions, nor carried out a survey, tested the services, appliances and specific fittings. Room sizes are approximate and rounded: they are taken between internal wall surfaces and therefore include cupboards/shelves, etc. Accordingly, they should not be relied upon for carpets and furnishings. It should also be noted that all fixtures and fittings, carpeted, curtains/blinds, kitchen equipment and garden statuary, whether fitted or not, are deemed removable by the vendor unless specifically itemised with these particulars.



### Hamptons Hampstead Lettings

9 Heath Street, Hampstead

London NW3 6TP

Tel: 020 7431 4462 - [HampsteadLettings@hamptons-int.com](mailto:HampsteadLettings@hamptons-int.com)

[www.hamptons.co.uk](http://www.hamptons.co.uk)

**HAMPTONS**  
INTERNATIONAL

Beyond your expectations