



Heath Street Hampstead NW3

£850 Per Week - Available 31/10/2017

HAMPTONS
INTERNATIONAL

Beyond your expectations

Set on the raised ground floor of this ideally situated mansion block is spacious and well presented three bedroom apartment to let. Comprising a spacious through reception, a separate contemporary fitted kitchen, master bedroom with en suite bathroom, two further double bedrooms and a second family bathroom. Features within the property include solid oak flooring and excellent ceiling height.

Description

Set on the raised ground floor of this ideally situated mansion block is spacious and well presented three bedroom apartment to let. Comprising a spacious through reception, a separate contemporary fitted kitchen, master bedroom with en suite bathroom, two further double bedrooms and a second family bathroom. Features within the property include solid oak flooring, neutral décor and excellent ceiling height. Northcote Mansions is ideally located to provide access not only to the local amenities of Hampstead Village but also the green open spaces and beautiful ponds of Hampstead Heath. The property is offered unfurnished and available from the end of October 2017.

Furnishing

Unfurnished



Reception



Reception

Hamptons Hampstead Lettings

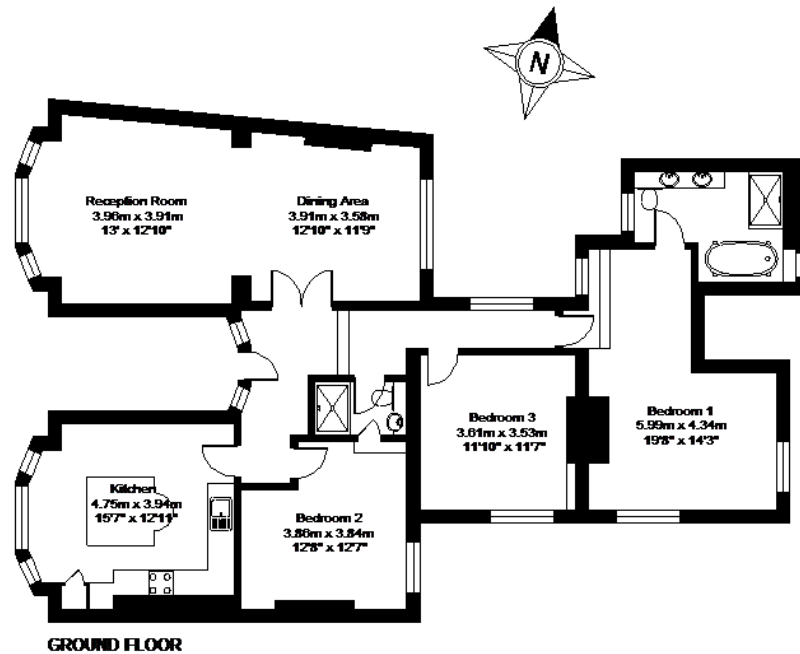
21 Heath Street, Hampstead

London NW3 6TR

Tel: 020 7431 4462 - HampsteadLettings@hamptons-int.com

www.hamptons.co.uk

Floorplan



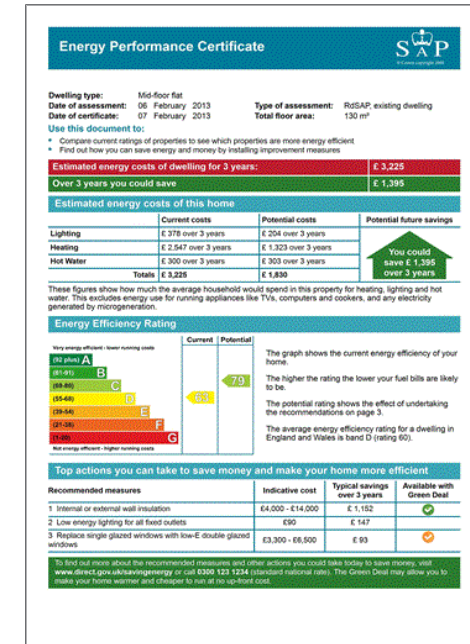
Northcote Mansions, Heath Street, London, NW3

APPROX. GROSS INTERNAL FLOOR AREA 1402 SQ FT 130.2 SQ METRES

Whilst every attempt has been made to ensure the accuracy of the floor plan contained here, measurements of doors, windows and rooms are approximate and no responsibility is taken for any error, omission or misstatement. These plans are for representation purposes only as defined by RICS Code of Measuring Practice and should be used as such by any prospective purchaser. Specifically no guarantee is given on the total square footage of the property if quoted on this plan. Any figure given is for information only and should not be relied on as a basis of valuation.

Copyright nichecom.co.uk 2015 Produced for Hamptons Country Lettings REF : 34483

Energy Performance Certificate (EPC)



For clarification, we wish to inform prospective purchasers that we have prepared these sales particulars as a general guide. We have not verified permissions, nor carried out a survey, tested the services, appliances and specific fittings. Room sizes are approximate and rounded: they are taken between internal wall surfaces and therefore include cupboards/shelves, etc. Accordingly, they should not be relied upon for carpets and furnishings. It should also be noted that all fixtures and fittings, carpeted, curtains/blinds, kitchen equipment and garden statuary, whether fitted or not, are deemed removable by the vendor unless specifically itemised with these particulars.

Hamptons Hampstead Lettings

21 Heath Street, Hampstead

London NW3 6TR

Tel: 020 7431 4462 - HampsteadLettings@hamptons-int.com

www.hamptons.co.uk

HAMPTONS
INTERNATIONAL

Beyond your expectations