



Firecrest Drive Hampstead NW3

£750 Per Week - Available 21/09/2016

HAMPTONS
INTERNATIONAL

Beyond your expectations

Firecrest Drive Hampstead NW3

£750 Per Week - Available 21/09/2016

HAMPTONS
INTERNATIONAL

Located within a private gated development is this modern two bedroom second floor apartment to let. Situated close to Hampstead Heath as well as both the tube and local amenities of Hampstead Village.

Spacious reception | Modern kitchen | Two bedrooms | Two bathrooms | Private roof terrace | Offered furnished.

Description

Located within a private gated development is this modern two bedroom second floor apartment to let. Situated close to Hampstead Heath as well as both the tube and local amenities of Hampstead Village. Finished to an exceptional standard the property comprises a spacious double reception, separate fully fitted kitchen with breakfast bar, master bedroom with ensuite bathroom, fitted wardrobes and access to a private balcony, a second double bedroom with ensuite bathroom, fitted wardrobes and access to a large private roof terrace. Features include neutral décor, underfloor heating in both bathrooms and a mix of wood floors and neutral carpets throughout. Benefits include communal gardens, 24 hr porter and underground parking by separate negotiation. Offered furnished and

available from the end of August 2016.

Furnishing

Furnished



Reception



Kitchen

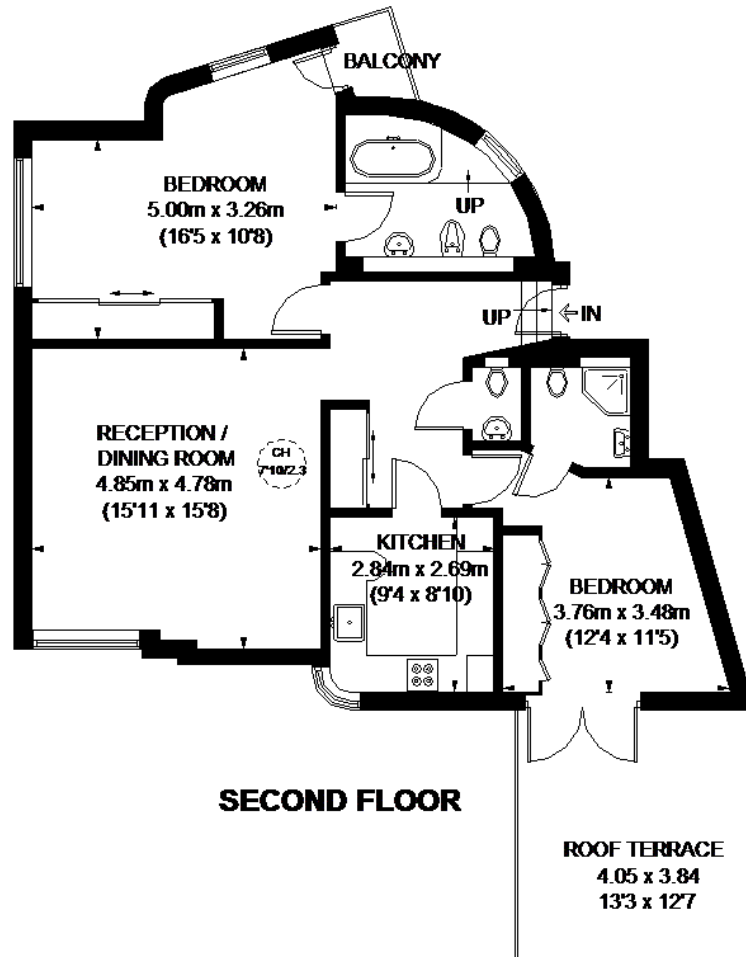
Hamptons Hampstead Lettings

9 Heath Street, Hampstead

London NW3 6TP

Tel: 020 7431 4462 - HampsteadLettings@hamptons-int.com

www.hamptons.co.uk



APPROXIMATE GROSS INTERNAL AREA
935 SQ. FT. (86.9 SQ. M.)

○ = CEILING HEIGHT

This plan is for layout guidance only. Not drawn to scale unless stated. Windows and door openings are approximate. Whilst every care is taken in the preparation of this plan, please check all dimensions, shapes and compass bearings before making any decisions reliant upon them. Please be advised that Hamptons International / our agents have not seen or reviewed any building regulations or planning permission in relation to works carried out to the property (ID267540)

Currently not available

For clarification, we wish to inform prospective purchasers that we have prepared these sales particulars as a general guide. We have not verified permissions, nor carried out a survey, tested the services, appliances and specific fittings. Room sizes are approximate and rounded: they are taken between internal wall surfaces and therefore include cupboards/shelves, etc. Accordingly, they should not be relied upon for carpets and furnishings. It should also be noted that all fixtures and fittings, carpeted, curtains/blinds, kitchen equipment and garden statuary, whether fitted or not, are deemed removable by the vendor unless specifically itemised with these particulars.

Hamptons Hampstead Lettings

9 Heath Street, Hampstead

London NW3 6TP

Tel: 020 7431 4462 - HampsteadLettings@hamptons-int.com

www.hamptons.co.uk

HAMPTONS
INTERNATIONAL

Beyond your expectations