



Remington Street London N1

£400 Per Week - Available Now

HAMPTONS
INTERNATIONAL

Beyond your expectations

A beautifully appointed first floor one bedroom flat with an open-plan reception room, fitted kitchen, superb shower room and bedroom. Complete with oak flooring and full-height wooden shutters.

One Double Bedroom | Bathroom | Open Plan Reception | Oak Flooring | Period Conversion | Modern Fitted Kitchen | Unfurnished.

Description

A beautifully appointed first floor one bedroom flat set on a leafy residential road in the heart of Angel. The property boasts clean lines and modern interiors with some period style features. The well-laid-out design makes the most of the space available with an open-plan reception room, fitted kitchen, superb shower room and bedroom. Complete with oak flooring and full-height wooden shutters.

Furnishing

Unfurnished



28B-Remington-Street-004



28B-Remington-Street-007

Hamptons Islington Lettings

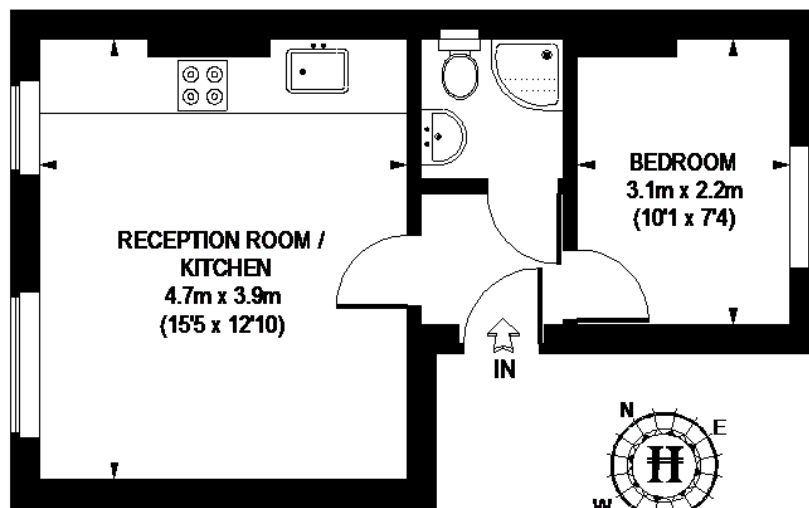
87 Upper Street, Islington

London N1 0NP

Tel: 0207 359 5675 - islingtonlettings@hamptons-int.com

www.hamptons.co.uk

REMINGTON STREET



FIRST FLOOR

APPROXIMATE GROSS INTERNAL AREA
333 SQ. FT. (30.9 SQ. M.)

This plan is for layout guidance only. Not drawn to scale unless stated. Windows & door openings are approximate. Whilst every care is taken in the preparation of this plan, please check all dimensions, shapes & compass bearings before making any decisions reliant upon them.

Please be advised that Hamptons International / our agents have not seen or reviewed any building regulations or planning permission in relation to works carried out to the property. (ID135899)

For clarification, we wish to inform prospective purchasers that we have prepared these sales particulars as a general guide. We have not verified permissions, nor carried out a survey, tested the services, appliances and specific fittings. Room sizes are approximate and rounded: they are taken between internal wall surfaces and therefore include cupboards/shelves, etc. Accordingly, they should not be relied upon for carpets and furnishings. It should also be noted that all fixtures and fittings, carpeted, curtains/blinds, kitchen equipment and garden statuary, whether fitted or not, are deemed removable by the vendor unless specifically itemised with these particulars.

