



Myddelton Square London EC1R

£625 Per Week - Available Now

HAMPTONS
INTERNATIONAL

Beyond your expectations

Myddelton Square London EC1R

£625 Per Week - Available Now

HAMPTONS
INTERNATIONAL

A charming split level two bedroom property, on one of Islington's most desirable squares, offering modern fittings throughout, original features and private patio garden.

Central Location | Two Bedrooms | Private Garden | Split Level | Separate Kitchen | Original Features | Modern Fittings | Utility Room | Fitted Storage.

Description

A beautiful split level two bedroom property, on one of Islington's most desirable squares, offering modern fittings throughout, original features and private garden whilst being moments from the boutique shops, bars, restaurants and transport links of both Upper Street/Angel, as well as Exmouth Market.

Furnishing

Unfurnished



A-15-Myddleton-Square-022



A-15-Myddleton-Square-024

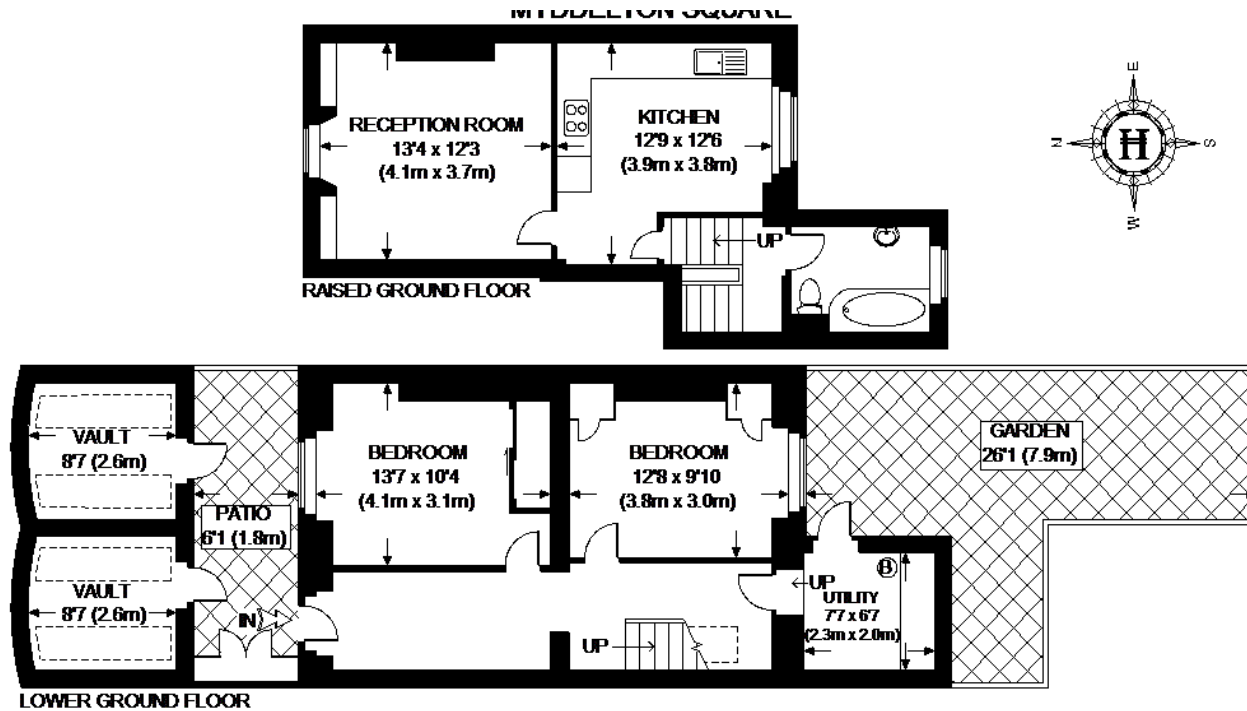
Hamptons Islington Lettings

87 Upper Street, Islington

London N1 0NP

Tel: 0207 359 5675 - islingtonlettings@hamptons-int.com

www.hamptons.co.uk



= RH = RESTRICTED HEAD ROOM BELOW 5 FT. / 1.5 M. MAX

**APPROXIMATE GROSS INTERNAL AREA (EXCLUDING VAULT) =
TOTAL = 873 SQ. FT. (81.1 SQ. M.)**

This plan is for layout guidance only. Not drawn to scale unless stated. Windows & door openings are approximate. Whilst every care is taken in the preparation of this plan, please check all dimensions, shapes & compass bearings before making any decisions reliant upon them. Please be advised that Hamptons International / our agents have not seen or reviewed any building regulations or planning permission in relation to works carried out to the property.

For clarification, we wish to inform prospective purchasers that we have prepared these sales particulars as a general guide. We have not verified permissions, nor carried out a survey, tested the services, appliances and specific fittings. Room sizes are approximate and rounded: they are taken between internal wall surfaces and therefore include cupboards/shelves, etc. Accordingly, they should not be relied upon for carpets and furnishings. It should also be noted that all fixtures and fittings, carpeted, curtains/blinds, kitchen equipment and garden statuary, whether fitted or not, are deemed removable by the vendor unless specifically itemised with these particulars.

Energy Performance Certificate (EPC)

