



Arlington Avenue London N1

£850 Per Week - Available 30/09/2016

HAMPTONS
INTERNATIONAL

Beyond your expectations

Hamptons are pleased to offer this immaculately presented three bedroom family home in the heart of one of Islington's most sought after squares.

Three Bedrooms | Double Reception | Dining Room | Fitted Kitchen | Family Bathroom | Extra W.C | Private Garden | Fireplace | Period Property | Offered Unfurnished.

Description

Hamptons are pleased to offer this immaculately presented three bedroom family home in the heart of one of Islington's most sought after squares. Configured over three floors the property boasts a double reception on the raised ground with wooden floors and fireplace, lower ground double bedroom with fitted storage, extra W.C, separate dining area leading onto a fully fitted kitchen with access to a private garden and two further double bedrooms to the first floor with family bathroom. With an abundance of fitted storage throughout benefiting from natural light, original features and contemporary décor. The residential area benefits from being part of the Arlington Association which is a strong local association that organises monthly fêtes and seasoning events. The central location allows for

easy access to Angel tube, overground and bus links and a wide range of amenities.

Furnishing

Unfurnished



18-ARLINGTON-AVENUE-011-700



18-ARLINGTON-AVENUE-006

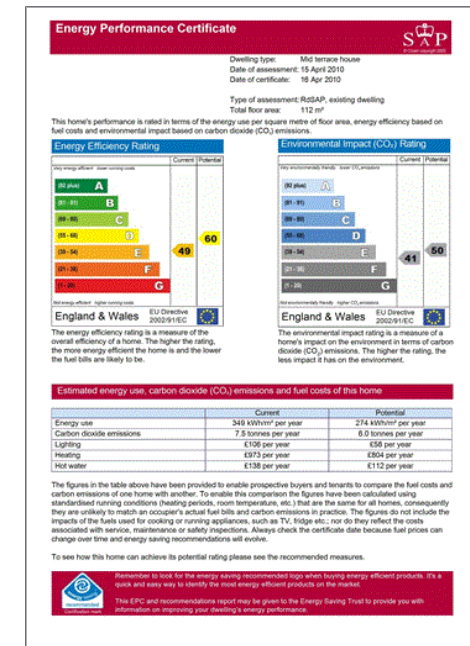
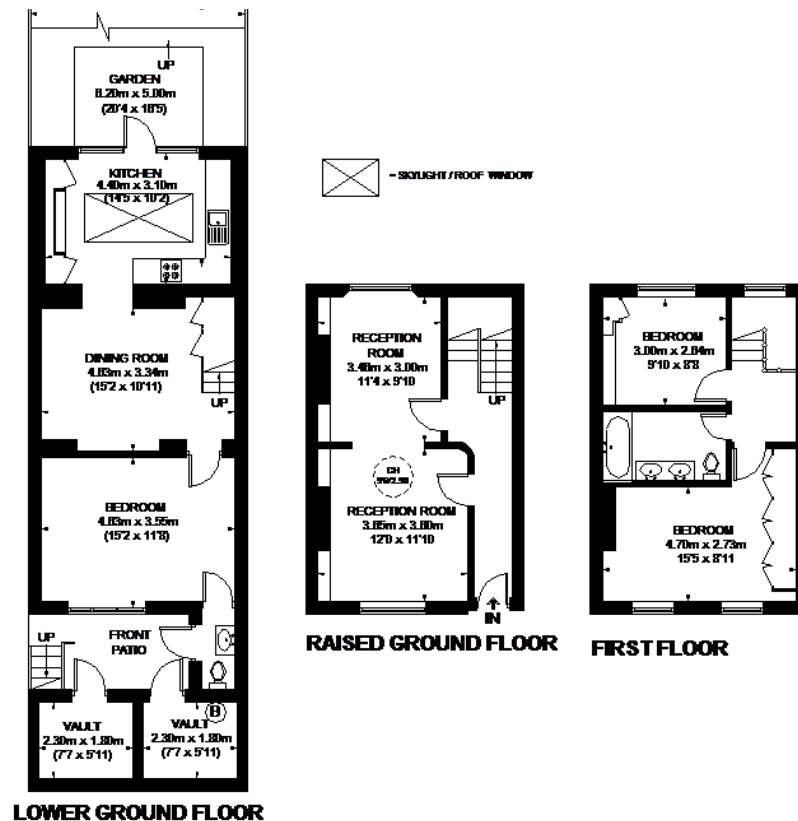
Hamptons Islington Lettings

87 Upper Street, Islington

London N1 0NP

Tel: 0207 359 5675 - islingtonlettings@hamptons-int.com

www.hamptons.co.uk



For clarification, we wish to inform prospective purchasers that we have prepared these sales particulars as a general guide. We have not verified permissions, nor carried out a survey, tested the services, appliances and specific fittings. Room sizes are approximate and rounded: they are taken between internal wall surfaces and therefore include cupboards/shelves, etc. Accordingly, they should not be relied upon for carpets and furnishings. It should also be noted that all fixtures and fittings, carpeted, curtains/blinds, kitchen equipment and garden statuary, whether fitted or not, are deemed removable by the vendor unless specifically itemised with these particulars.