



Copenhagen Street London N1

£525 Per Week - Available 08/11/2017

**HAMPTONS**  
INTERNATIONAL

*Beyond your expectations*

*Hamptons are pleased to offer this contemporary and light two bedroom apartment, situated on the third floor of this secure modern development. Benefiting from modern bathroom, on-site concierge, lift access, wooden floors, and balcony.*

Two Bedrooms | Bathroom | Wooden Floors | Fitted Kitchen | Lift | Porter | Balcony | Contemporary Fittings | Close To Amenities.

### Description

Hamptons are pleased to offer this contemporary and light two bedroom apartment, situated on the third floor of this secure modern development. Benefiting from modern bathroom, on-site concierge, lift access, wooden floors, and balcony.

### Furnishing

Furnished



44-KINGS-QUARTER-6



44-KINGS-QUARTER-5

### Hamptons Islington Lettings

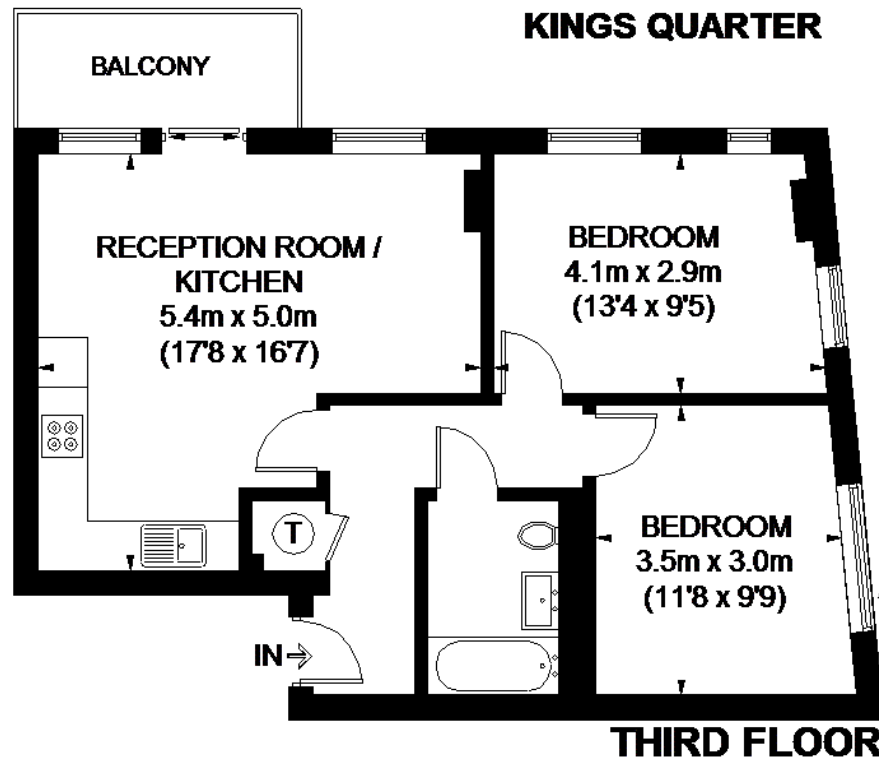
87 Upper Street, Islington

London N1 0NP

Tel: 0207 359 5675 - [islingtonlettings@hamptons-int.com](mailto:islingtonlettings@hamptons-int.com)

[www.hamptons.co.uk](http://www.hamptons.co.uk)

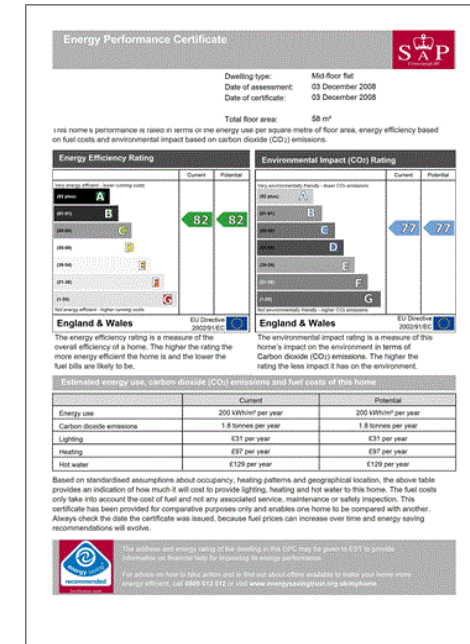
## Floorplan



APPROXIMATE GROSS INTERNAL AREA  
631 SQ. FT. (58.6 SQ. M.)

This plan is for layout guidance only. Not drawn to scale unless stated. Windows and door openings are approximate. Whilst every care is taken in the preparation of this plan, please check all dimensions, shapes and compass bearings before making any decisions reliant upon them. Please be advised that Hamptons International / our agents have not seen or reviewed any building regulations or planning permission in relation to works carried out to the property (01800878).

## Energy Performance Certificate (EPC)



**For clarification,** we wish to inform prospective purchasers that we have prepared these sales particulars as a general guide. We have not verified permissions, nor carried out a survey, tested the services, appliances and specific fittings. Room sizes are approximate and rounded: they are taken between internal wall surfaces and therefore include cupboards/shelves, etc. Accordingly, they should not be relied upon for carpets and furnishings. It should also be noted that all fixtures and fittings, carpeted, curtains/blinds, kitchen equipment and garden statuary, whether fitted or not, are deemed removable by the vendor unless specifically itemised with these particulars.

## Hamptons Islington Lettings

87 Upper Street, Islington

London N1 0NP

Tel: 0207 359 5675 - [islingtonlettings@hamptons-int.com](mailto:islingtonlettings@hamptons-int.com)

[www.hamptons.co.uk](http://www.hamptons.co.uk)

**HAMPTONS**  
INTERNATIONAL

Beyond your expectations