



Chantry Square London W8

£1,150 Per Week - Available Now

**HAMPTONS**  
INTERNATIONAL

*Beyond your expectations*

*This bright and contemporary three bedroom apartment offers wooden floors, a bright dual aspect reception room and a modern open plan kitchen. Situated in a secure portered development in Kensington with underground parking.*

3 bedrooms | 2 Bathrooms | Open plan Kitchen | Concierge | Gym | Lift | Underground Parking.

### Description

Call us between our extended opening hours of 6 - 9PM Monday to Thursday to arrange an appointment. This bright and contemporary three bedroom apartment in this secure portered development in Kensington with underground parking. The apartment is set on the 2nd Floor (with lift) and comprises bright reception room with open plan modern kitchen. The large master bedroom benefits from excellent storage and an en suite shower room. There are two further bedrooms and a family bathroom. The development offers communal gardens, porter and gym. Offered unfurnished.

### Situation

Rowan Lodge is located within a secure private development with 24hr concierge, a short walk of

High Street Kensington and Gloucester Road tube stations.

### Furnishing

Unfurnished



Reception



Exterior

### Hamptons Kensington Lettings

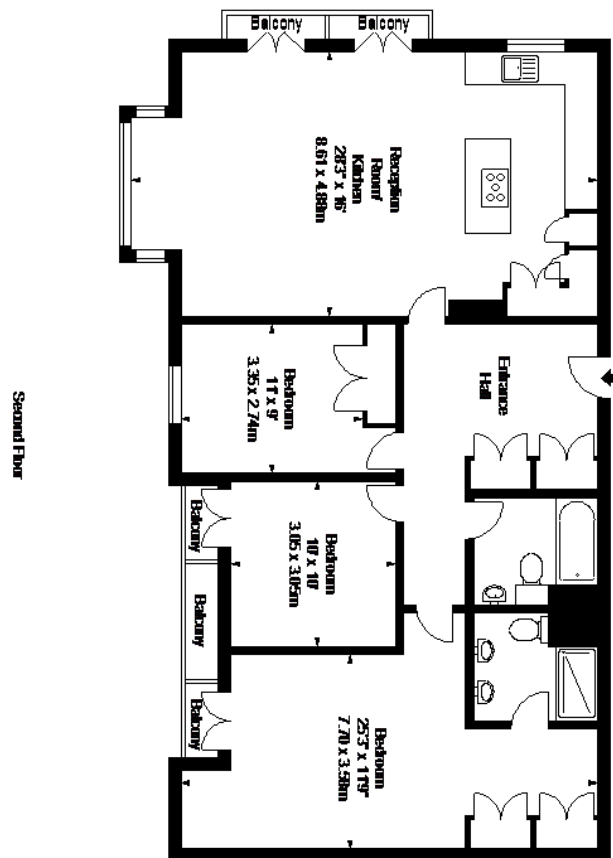
8 Hornton Street, Kensington

London W8 4NW

Tel: 020 7937 9372 - [KensingtonLettings@hamptons-int.com](mailto:KensingtonLettings@hamptons-int.com)

[www.hamptons.co.uk](http://www.hamptons.co.uk)

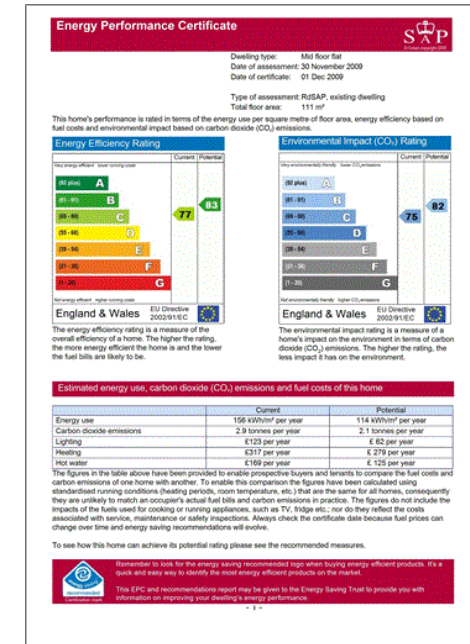
## Floorplan



Roman Lodge,  
Kensington Green, W8  
Apex, Gross Internal Area  
1188 Sq Ft - 110.37 Sq M



## Energy Performance Certificate (EPC)



**For clarification,** we wish to inform prospective purchasers that we have prepared these sales particulars as a general guide. We have not verified permissions, nor carried out a survey, tested the services, appliances and specific fittings. Room sizes are approximate and rounded: they are taken between internal wall surfaces and therefore include cupboards/shelves, etc. Accordingly, they should not be relied upon for carpets and furnishings. It should also be noted that all fixtures and fittings, carpeted, curtains/blinds, kitchen equipment and garden statuary, whether fitted or not, are deemed removable by the vendor unless specifically itemised with these particulars.

## Hamptons Kensington Lettings

8 Hornton Street, Kensington

London W8 4NW

Tel: 020 7937 9372 - KensingtonLettings@hamptons-int.com

[www.hamptons.co.uk](http://www.hamptons.co.uk)

**HAMPTONS**  
INTERNATIONAL

Beyond your expectations