



Campden Hill Road London W8

£1,380 Per Week - Available Now

**HAMPTONS**  
INTERNATIONAL

*Beyond your expectations*



# Campden Hill Road London W8

£1,380 Per Week - Available Now

**HAMPTONS**  
INTERNATIONAL

*An impressive four bedroom family house with a pretty private garden, located in central Kensington. The property has been recently decorated and has access to private parking.*

4 Bedrooms | 3 Bathrooms | House | Kitchen/Dining | Private Garden | Underground Parking.

## Description

Call us between our extended opening hours of 6 - 9PM Monday to Thursday to arrange an appointment. An impressive four bedroom family house with a pretty private garden, located in central Kensington. The property has been recently decorated and has access to private underground parking in the Kensington Heights development across the road. On the raised ground floor the house comprises modern kitchen with separate adjoining dining room and access down to a pretty private garden. On the lower floor there are two double bedrooms (one en suite). The first floor comprises bright reception room with wood floors and on the half landing there is a shower room. On the second floor there are two further double bedrooms and family bathroom. Offered unfurnished.

## Situation

Campden Hill Road is well located for the amenities of Notting Hill (Central, District and Circle lines) and the shops, cafes and restaurants of Kensington High Street.

## Furnishing

Unfurnished



Dining Room



Reception

## Hamptons Kensington Lettings

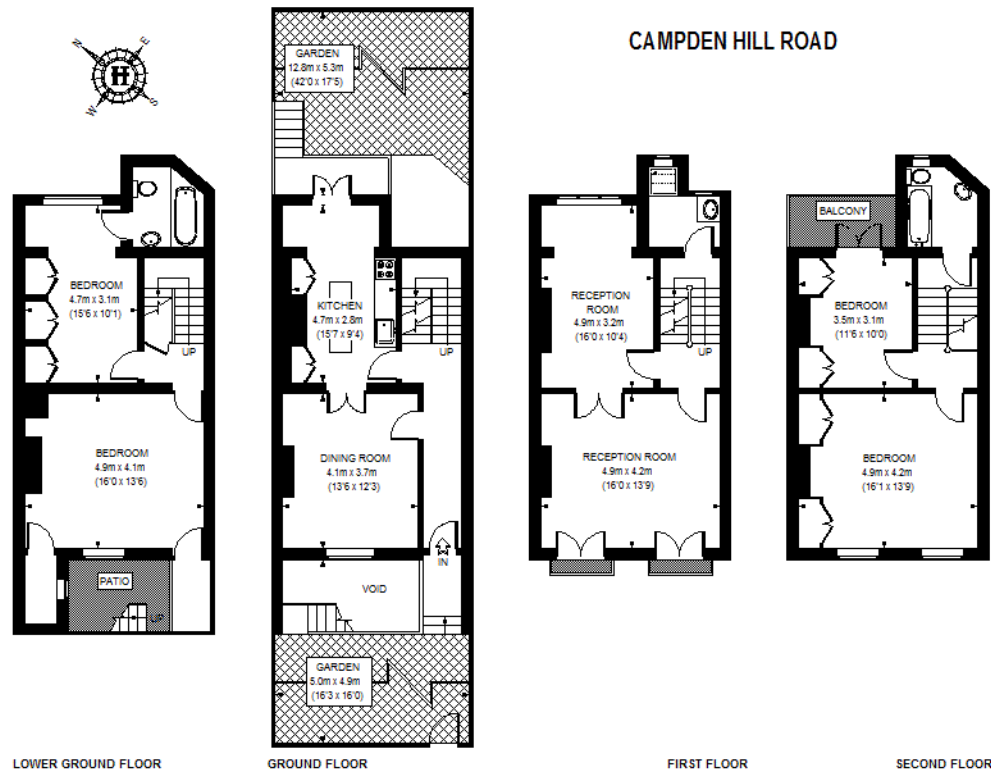
8 Hornton Street, Kensington

London W8 4NW

Tel: 020 7937 9372 - [KensingtonLettings@hamptons-int.com](mailto:KensingtonLettings@hamptons-int.com)

[www.hamptons.co.uk](http://www.hamptons.co.uk)

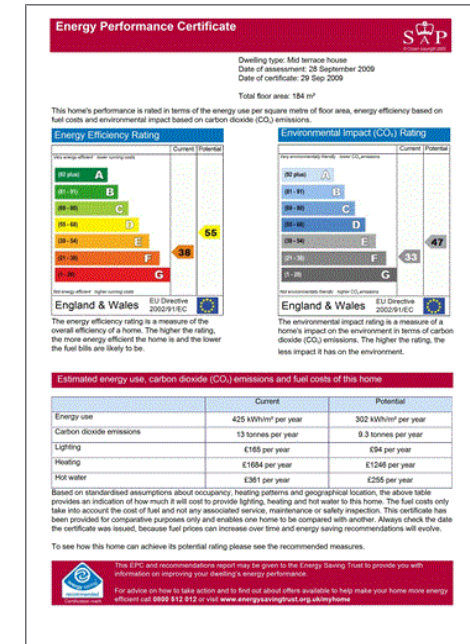
## Floorplan



APPROXIMATE GROSS INTERNAL AREA (EXCLUDING PATIO) = 1916 SQ. FT. (178 SQ. M.)

This plan is for guidance only. No dimensions are shown. Windows & door openings are approximate. No liability is accepted for any errors or omissions. Please check all dimensions, shapes & compass bearings before making any decisions relating to them.

## Energy Performance Certificate (EPC)



**For clarification,** we wish to inform prospective purchasers that we have prepared these sales particulars as a general guide. We have not verified permissions, nor carried out a survey, tested the services, appliances and specific fittings. Room sizes are approximate and rounded: they are taken between internal wall surfaces and therefore include cupboards/shelves, etc. Accordingly, they should not be relied upon for carpets and furnishings. It should also be noted that all fixtures and fittings, carpeted, curtains/blinds, kitchen equipment and garden statuary, whether fitted or not, are deemed removable by the vendor unless specifically itemised with these particulars.

## Hamptons Kensington Lettings

8 Hornton Street, Kensington

London W8 4NW

Tel: 020 7937 9372 - [KensingtonLettings@hamptons-int.com](mailto:KensingtonLettings@hamptons-int.com)

[www.hamptons.co.uk](http://www.hamptons.co.uk)

**HAMPTONS**  
INTERNATIONAL

Beyond your expectations