



Eden Close London W8

£1,200 Per Week - Available 11/12/2017

**HAMPTONS**  
INTERNATIONAL

*Beyond your expectations*

*A spacious three bedroom town house with large garage in an excellent location off Kensington High Street. This modern property is located in a secure gated close and offered unfurnished.*

3 Bedrooms | 2 Bathrooms | Guest WC | Garage | Utility Area | Unfurnished.

### Description

Call us between our extended opening hours of 6 - 9PM Monday to Thursday to arrange an appointment. A spacious three bedroom town house with large garage in an excellent location off Kensington High Street. This modern town house offers flexible living accommodation within a secure gated private close. The house is entered on the raised ground floor into an open plan kitchen/ dining room with access to a private small decked patio and a guest WC. On the first floor there is a large double aspect reception room and the second floor comprises two double bedrooms, small balcony and modern family bathroom. The top floor is a master suite with en suite shower room. The garage is on the ground floor with space for bikes and large utility area with sink, storage and separate washer and dryer.

### Situation

Eden Close is moments from the shops, bars and restaurants of Kensington High Street.

### Furnishing

Unfurnished



Reception



Exterior

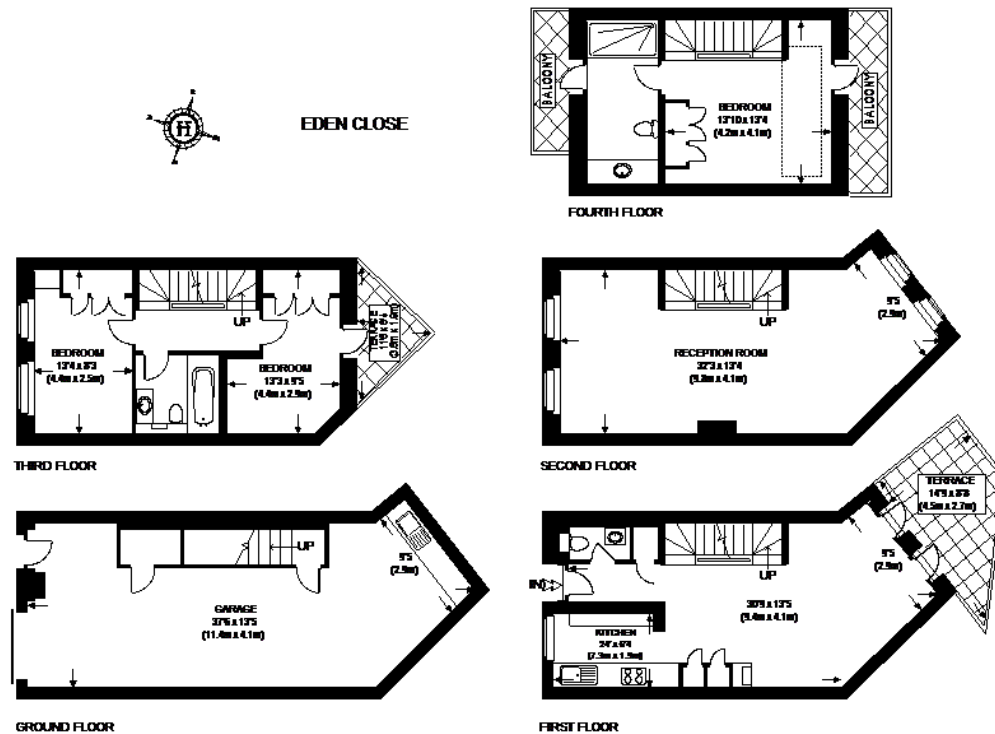
### Hamptons Kensington Lettings

8 Hornton Street, Kensington

London W8 4NW

Tel: 020 7937 9372 - [KensingtonLettings@hamptons-int.com](mailto:KensingtonLettings@hamptons-int.com)

[www.hamptons.co.uk](http://www.hamptons.co.uk)



APPROXIMATE GROSS INTERNAL AREA (INCLUDING GARAGE) = 1845 SQ.FT. (171 SQ. M.)

This plan is for layout guidance only. Not drawn to scale unless stated. Windows & door openings are approximate. Whilst every care is taken in the preparation of this plan, please check all dimensions, shapes & compass bearings before making any decisions reliant upon it.

**For clarification,** we wish to inform prospective purchasers that we have prepared these sales particulars as a general guide. We have not verified permissions, nor carried out a survey, tested the services, appliances and specific fittings. Room sizes are approximate and rounded: they are taken between internal wall surfaces and therefore include cupboards/shelves, etc. Accordingly, they should not be relied upon for carpets and furnishings. It should also be noted that all fixtures and fittings, carpeted, curtains/blinds, kitchen equipment and garden statuary, whether fitted or not, are deemed removable by the vendor unless specifically itemised with these particulars.

