



Southwell Gardens London SW7

£1,850 Per Week - Available Now

HAMPTONS
INTERNATIONAL

Beyond your expectations

Southwell Gardens London SW7

£1,850 Per Week - Available Now

HAMPTONS
INTERNATIONAL

SHORT LET - ALL BILLS INCLUDED A spacious and well proportioned one bedroom apartment on the lower floor of this period conversion, moments from Gloucester Road. Offered furnished.

1 Bedroom | 1 Bathroom | Central Location | Apple AirPlay | Furnished.

Description

A spacious and well proportioned one bedroom apartment offered for short let on the lower floor of this period conversion, moments from Gloucester Road. The apartment comprises modern kitchen, spacious living area with designer Italian furniture, bathroom and bedroom. There are white American Oak wood floor throughout, all the latest AV equipment including Apple Airplay in every room and Apple TV with Sky. The property is served by two dedicated maids, a Yoga & Pilates Studio and a personal trainer. Offered furnished with ALL BILLS INCLUDED.

Situation

Southwell Gardens is located close the shop, restaurants and transport links (piccadilly and

district lines) of Gloucester Road. Kensington High Street and Hyde Park are also close by.

Furnishing

Furnished



Kitchen



Exterior

Hamptons Kensington Lettings

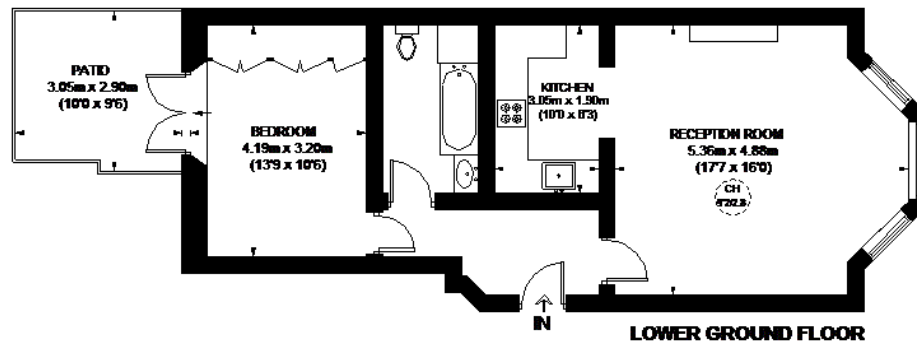
8 Hornton Street, Kensington

London W8 4NW

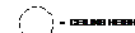
Tel: 020 7937 9372 - KensingtonLettings@hamptons-int.com

www.hamptons.co.uk

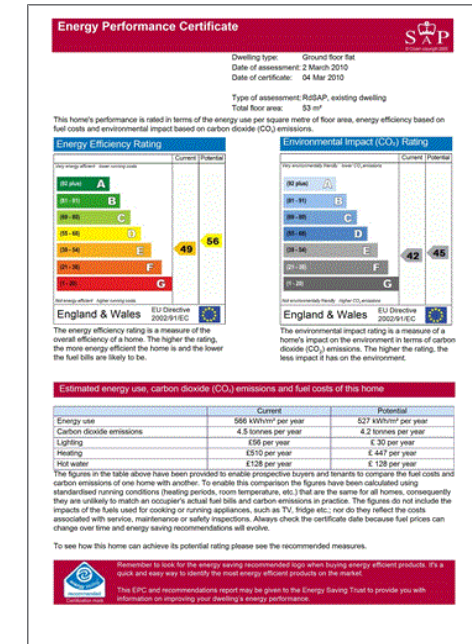
SOUTHWELL GARDENS



APPROXIMATE GROSS INTERNAL AREA
LOWER GROUND FLOOR
619 SQ. FT. (57.5 SQ. M.)



This plan is for layout purposes only. Not drawn to scale unless stated. Windows and door openings are approximate. Whilst every care is taken in the preparation of this plan, please check all dimensions, shapes and complete layouts before making any decisions related to the property. Please be advised that Hampton International / our agents have not seen or reviewed any building regulations or planning permission in relation to work carried out to the property (01200000000)



For clarification, we wish to inform prospective purchasers that we have prepared these sales particulars as a general guide. We have not verified permissions, nor carried out a survey, tested the services, appliances and specific fittings. Room sizes are approximate and rounded: they are taken between internal wall surfaces and therefore include cupboards/shelves, etc. Accordingly, they should not be relied upon for carpets and furnishings. It should also be noted that all fixtures and fittings, carpeted, curtains/blinds, kitchen equipment and garden statuary, whether fitted or not, are deemed removable by the vendor unless specifically itemised with these particulars.