

Premium



Southwell Gardens London SW7

£1,650 Per Week - Available Now

HAMPTONS
INTERNATIONAL

Beyond your expectations

Southwell Gardens London SW7

£1,650 Per Week - Available Now

HAMPTONS
INTERNATIONAL

Situated on the raised ground floor of this impressive period building, this immaculately finished two bedroom apartment has been meticulously refurbished and benefits from amazing garden views.

2 Bedrooms | 2 Bathrooms | Central Location | Furnished.

Description

Situated on the raised ground floor of this impressive period building, this immaculately finished two bedroom apartment has been meticulously refurbished. The apartment boasts a wealth of natural light with high ceilings and hardwood floors throughout. There is a spacious living room with modern open plan kitchen, two bedrooms and two bathrooms (one en suite). The living areas have designer Italian furniture, silk blinds, all the latest AV equipment, including Apple Airplay in every room and Apple TV with Sky. The property is served by two dedicated maids, a Yoga & Pilates Studio and a personal trainer.

Situation

Southwell Gardens is located close the shop,

restaurants and transport links (Piccadilly and District lines) of Gloucester Road. Kensington High Street and Hyde Park are also close by.

Furnishing

Furnished



Kitchen



Exterior

Hamptons Kensington Lettings

8 Hornton Street, Kensington

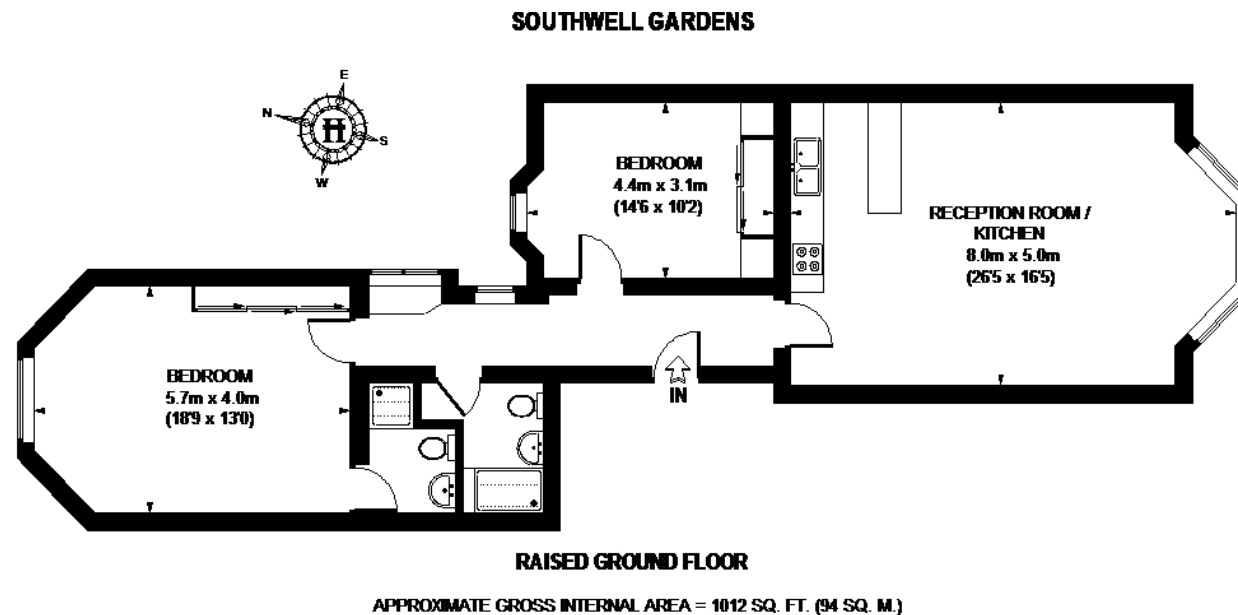
London W8 4NW

Tel: 020 7937 9372 - KensingtonLettings@hamptons-int.com

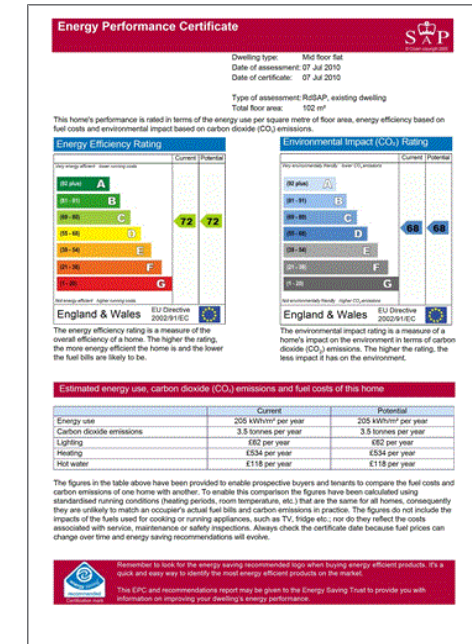
www.hamptons.co.uk

Floorplan

Energy Performance Certificate (EPC)



This plan is for layout guidance only. Not drawn to scale unless stated. Windows & door openings are approximate. Whilst every care is taken in the preparation of this plan, please check all dimensions, shapes & compass bearings before making any decisions reliant upon them. Please be advised that Hamptons International / our agents have not seen or reviewed any building regulations or planning permission in relation to works carried out to the property. (034969)



For clarification, we wish to inform prospective purchasers that we have prepared these sales particulars as a general guide. We have not verified permissions, nor carried out a survey, tested the services, appliances and specific fittings. Room sizes are approximate and rounded: they are taken between internal wall surfaces and therefore include cupboards/shelves, etc. Accordingly, they should not be relied upon for carpets and furnishings. It should also be noted that all fixtures and fittings, carpeted, curtains/blinds, kitchen equipment and garden statuary, whether fitted or not, are deemed removable by the vendor unless specifically itemised with these particulars.

Hamptons Kensington Lettings

8 Hornton Street, Kensington

London W8 4NW

Tel: 020 7937 9372 - KensingtonLettings@hamptons-int.com

www.hamptons.co.uk

HAMPTONS
INTERNATIONAL

Beyond your expectations