



Adam & Eve Mews London W8

£900 Per Week - Available 18/10/2017

**HAMPTONS**  
INTERNATIONAL

*Beyond your expectations*

*SHORT LET - ALL BILLS INCLUDED A charming two bedroom duplex apartment set over the first and second floors of this pretty mews house. Benefiting from a wonderful private roof terrace and located moment from Kensington High Street.*

SHORT LET | BILLS INCLUDED | 1 Bedroom | 1 Bathroom | Wooden floors | Terrace.

### Description

A charming one bedroom duplex apartment available for short let set over the first and second floors of this pretty mews house. Benefiting from a wonderful private roof terrace and located moment from Kensington High Street. The property comprises a bright open plan kitchen reception with access to a balcony and then a staircases up to a large private roof terrace. There are two double bedrooms with good storage and modern bathroom. Offered on a short let basis with ALL BILLS INCLUDED.

### Situation

Adam & Eve Mews is a cobbled mews street located just off Kensington High Street and offering excellent access to the shops, restaurants and transport facilities (District and Circle line

tubes).

### Furnishing

Furnished



Terrace



Kitchen

### Hamptons Kensington Lettings

8 Hornton Street, Kensington

London W8 4NW

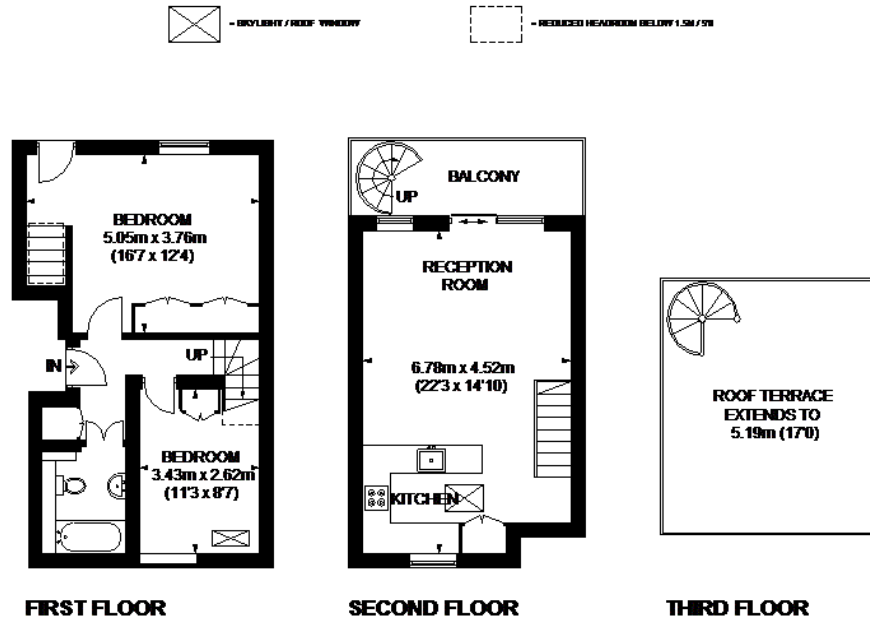
Tel: 020 7937 9372 - [KensingtonLettings@hamptons-int.com](mailto:KensingtonLettings@hamptons-int.com)

[www.hamptons.co.uk](http://www.hamptons.co.uk)

## Floorplan

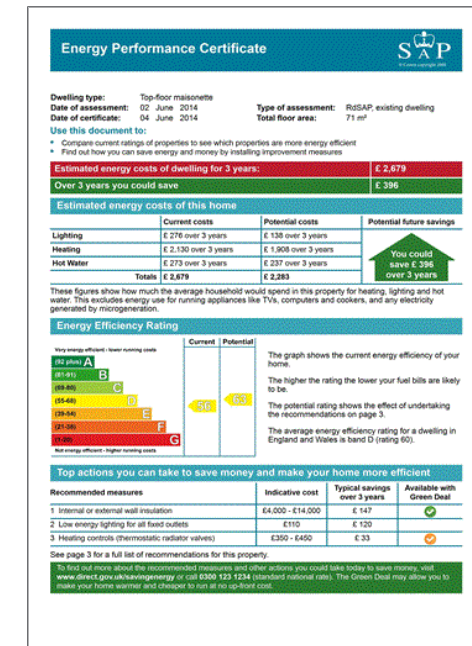
## Energy Performance Certificate (EPC)

### ADAM & EVE MEWS



APPROXIMATE GROSS INTERNAL AREA  
(EXCLUDING REDUCED HEADROOM)  
FIRST FLOOR = 282 SQ. FT. (26.2 SQ. M.)  
SECOND FLOOR = 321 SQ. FT. (29.8 SQ. M.)  
REDUCED HEADROOM  
10 SQ. FT. (0.9 SQ. M.)  
TOTAL = 613 SQ. FT. (56.9 SQ. M.)

This plan is for layout guidance only. Not drawn to scale.  
Room sizes are approximate and rounded.  
Please check all dimensions, elevations and compare before  
making any decisions about the property. Please be  
aware that the dimensions are approximate and may vary.  
We do not warrant any building regulations or planning permission  
in relation to the property (0134657780)



**For clarification,** we wish to inform prospective purchasers that we have prepared these sales particulars as a general guide. We have not verified permissions, nor carried out a survey, tested the services, appliances and specific fittings. Room sizes are approximate and rounded: they are taken between internal wall surfaces and therefore include cupboards/shelves, etc. Accordingly, they should not be relied upon for carpets and furnishings. It should also be noted that all fixtures and fittings, carpeted, curtains/blinds, kitchen equipment and garden statuary, whether fitted or not, are deemed removable by the vendor unless specifically itemised with these particulars.

## Hamptons Kensington Lettings

8 Hornton Street, Kensington

London W8 4NW

Tel: 020 7937 9372 - [KensingtonLettings@hamptons-int.com](mailto:KensingtonLettings@hamptons-int.com)

[www.hamptons.co.uk](http://www.hamptons.co.uk)

**HAMPTONS**  
INTERNATIONAL

Beyond your expectations