



Trafalgar Gardens, South End Row London W8

£1,350 Per Week - Available Now

HAMPTONS
INTERNATIONAL

Beyond your expectations

Trafalgar Gardens, South End Row London W8

£1,350 Per Week - Available Now

HAMPTONS
INTERNATIONAL

A well proportioned three bedroom apartment on the 1st floor (with lift) of this modern building, situated on South End Row and close to Kensington High Street. Benefiting from an underground parking space.

3 Bedrooms | 2 Bathrooms | Furnished | Underground Parking.

Description

A well proportioned three bedroom apartment on the 1st floor (with lift) of this modern building, situated on South End Row and close to Kensington High Street. The apartment comprises reception room with balcony, separate kitchen, three bedrooms (one en suite) and family bathroom. Offered furnished and with an underground parking space.

Situation

Trafalgar Gardens is situated on South End Row, moments from the shops, restaurants and transport links of Kensington High Street (district and circle lines).

Furnishing

Furnished



Kitchen



Exterior

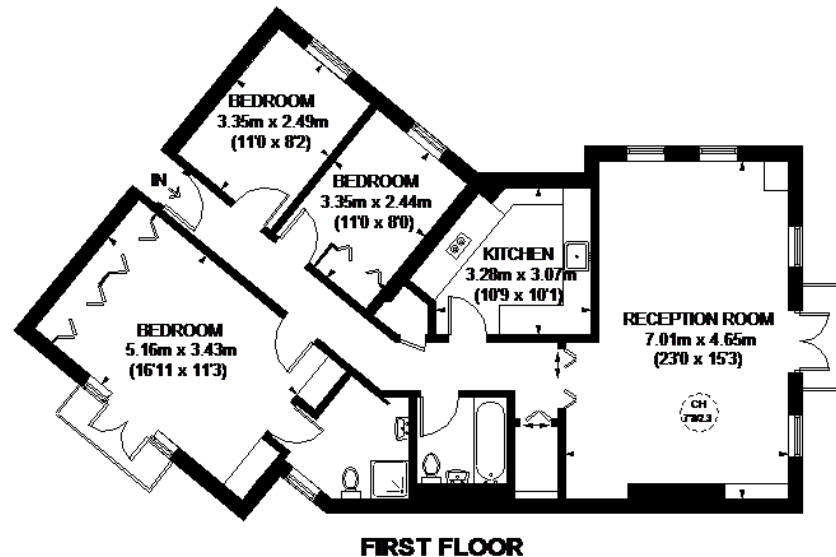
Hamptons Kensington Lettings

8 Hornton Street, Kensington

London W8 4NW

Tel: 020 7937 9372 - KensingtonLettings@hamptons-int.com

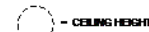
www.hamptons.co.uk



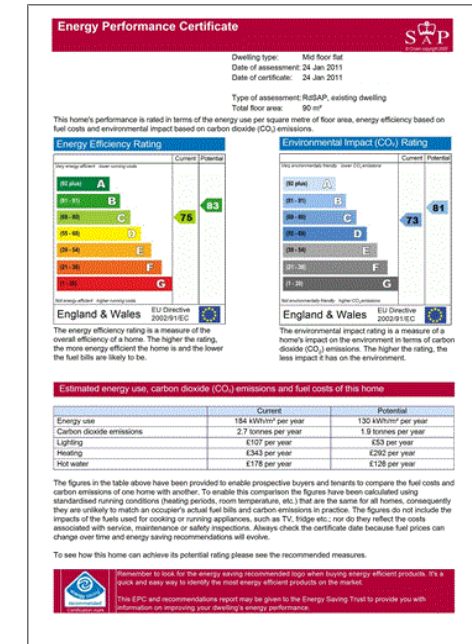
TRAFALGAR GARDENS



APPROXIMATE GROSS INTERNAL AREA
1102 SQ. FT. (102.4 SQ. M.)



This plan is for layout guidance only. Not drawn to scale.
Room labels, dimensions and door openings are approximate.
Visual survey only is taken in the preparation of this plan,
please check all dimensions, diagrams and compare bearings
before making any decisions related upon them. (Please be
advised that if Hampshire International / our agents have not
seen or reviewed any building regulations or planning permission
in relation to work carried out to the property (PL200729)



For clarification, we wish to inform prospective purchasers that we have prepared these sales particulars as a general guide. We have not verified permissions, nor carried out a survey, tested the services, appliances and specific fittings. Room sizes are approximate and rounded: they are taken between internal wall surfaces and therefore include cupboards/shelves, etc. Accordingly, they should not be relied upon for carpets and furnishings. It should also be noted that all fixtures and fittings, carpeted, curtains/blinds, kitchen equipment and garden statuary, whether fitted or not, are deemed removable by the vendor unless specifically itemised with these particulars.

Hamptons Kensington Lettings

8 Hornton Street, Kensington

London W8 4NW

Tel: 020 7937 9372 - KensingtonLettings@hamptons-int.com

www.hamptons.co.uk

HAMPTONS
INTERNATIONAL

Beyond your expectations