



Bridgeman House, Radnor Terrace London W14

£790 Per Week - Available Now

**HAMPTONS**  
INTERNATIONAL

*Beyond your expectations*

# Bridgeman House, Radnor Terrace London W14

£790 Per Week - Available Now

**HAMPTONS**  
INTERNATIONAL

*A beautifully presented two bedroom apartment set on the first floor of this exclusive new development off Kensington High Street. Benefiting from onsite gym, sauna and cinema.*

2 Bedrooms | 2 Bathrooms | Air Cooling | Concierge | Gym | Home Cinema | Lift | Pool | Sauna | Spa.

## Description

A beautifully presented two bedroom apartment set on the first floor of this exclusive new development off Kensington High Street. The apartment comprises dual aspect open-plan kitchen reception room with wood floors, fully fitted kitchen with Miele appliances and doors out to a decked balcony. The master bedroom offers good storage and an en suite bathroom and there is a further double bedroom and family shower room. The apartment benefits from state of the art technology and heating systems and is offered furnished. This fantastic development offers access to a stunning communal gym, sauna, steam room, urban retreat spa, indoor swimming pool, cinema and concierge.

## Situation

Bridgeman House is situated at the end of Kensington High Street, with access to Kensington Olympia overland and tube station and High Street Kensington (District and Circle lines).

## Furnishing

Furnished



Kitchen



Balcony

## Hamptons Kensington Lettings

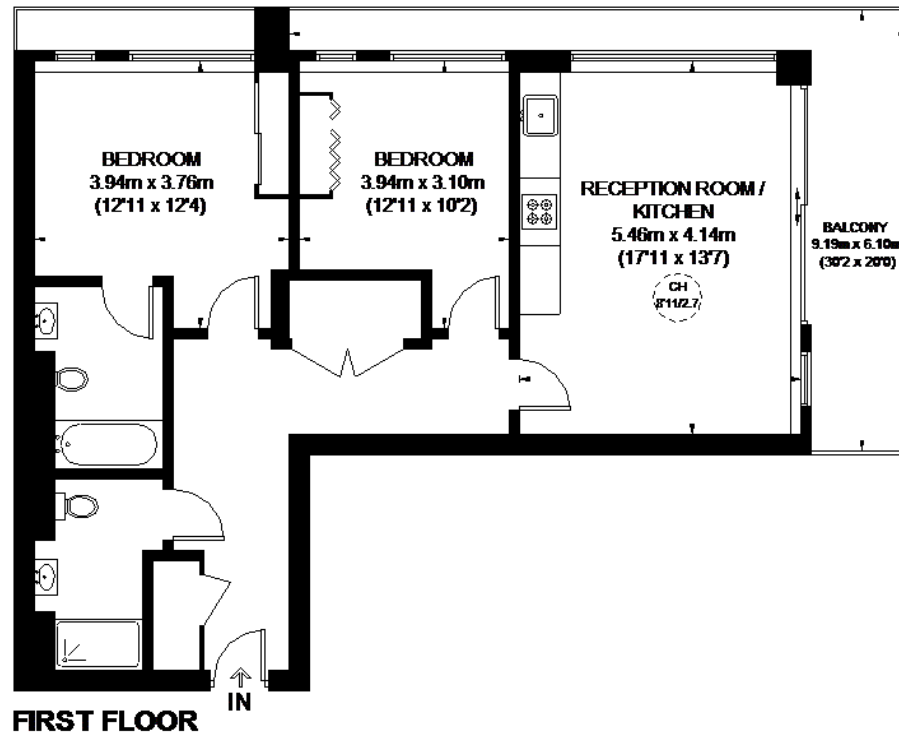
8 Hornton Street, Kensington

London W8 4NW

Tel: 020 7937 9372 - [KensingtonLettings@hamptons-int.com](mailto:KensingtonLettings@hamptons-int.com)

[www.hamptons.co.uk](http://www.hamptons.co.uk)

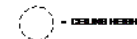
## Floorplan



## BRIDGEMAN HOUSE

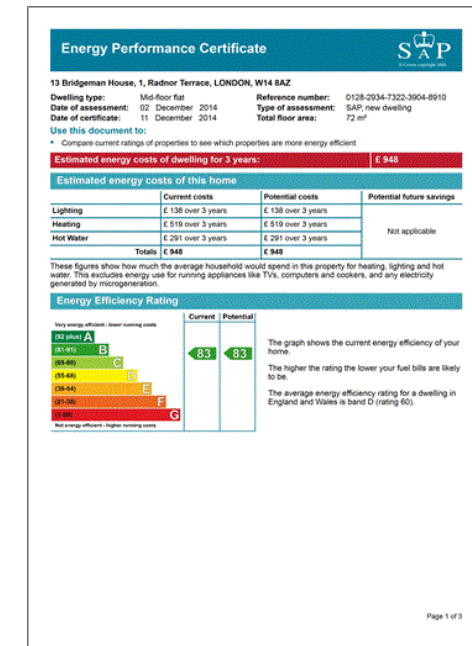


APPROXIMATE GROSS INTERNAL AREA  
FIRST FLOOR = 801 SQ. FT. (74.4 SQ. M.)



This plan is for layout guidance only. Not drawn to scale unless stated. Windows and door openings are approximate. Whilst every care is taken in the preparation of this plan, please check all dimensions, shapes and complete before building any structure related upon them. Please be advised that Hamptons International / our agents have not seen or reviewed any building regulations or planning permission in relation to work carried out to the property (022793444)

## Energy Performance Certificate (EPC)



**For clarification,** we wish to inform prospective purchasers that we have prepared these sales particulars as a general guide. We have not verified permissions, nor carried out a survey, tested the services, appliances and specific fittings. Room sizes are approximate and rounded: they are taken between internal wall surfaces and therefore include cupboards/shelves, etc. Accordingly, they should not be relied upon for carpets and furnishings. It should also be noted that all fixtures and fittings, carpeted, curtains/blinds, kitchen equipment and garden statuary, whether fitted or not, are deemed removable by the vendor unless specifically itemised with these particulars.

## Hamptons Kensington Lettings

8 Hornton Street, Kensington

London W8 4NW

Tel: 020 7937 9372 - KensingtonLettings@hamptons-int.com

[www.hamptons.co.uk](http://www.hamptons.co.uk)

**HAMPTONS**  
INTERNATIONAL

Beyond your expectations