



Brompton Square Knightsbridge SW3

£795 Per Week - Available Now

HAMPTONS
INTERNATIONAL

Beyond your expectations

Brompton Square Knightsbridge SW3

£795 Per Week - Available Now

HAMPTONS
INTERNATIONAL

Located in this highly desirable garden square, this lower ground floor apartment boasts a wealth of charm with a contemporary edge.

2 Bedrooms | 2 Bathrooms | Gas Hob | Garden | Permit Parking.

Description

Located in this highly desirable garden square, this lower ground floor apartment boasts a wealth of charm with a contemporary edge. This intelligently laid out apartment further benefits from wooden floors through the reception with French doors leading to the patio garden. The property is also located directly opposite the communal gardens and in addition provides immediate access to all the varied shopping, cafés and transport links of Knightsbridge.

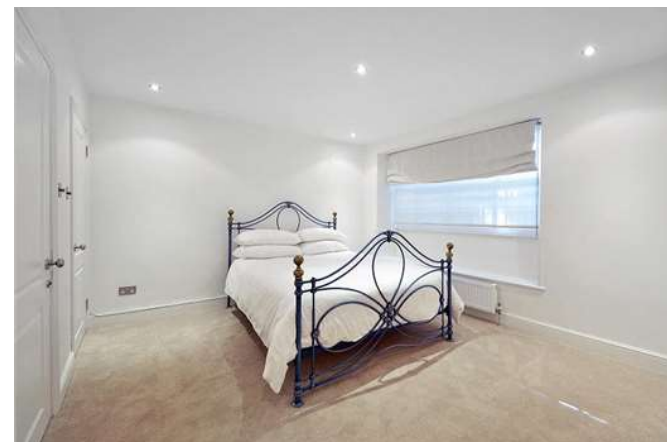
Situation

Centrally located, Knightsbridge is an exquisite part of London and home to the social elite. The area contains many of London's finest restaurants, shops, art galleries and hotels. Knightsbridge itself is a premier international

business location, which benefits from its close proximity to the West End and is in easy reach of the City of London and Canary Wharf. Knightsbridge is also famed for Hyde Park where you can walk, run, go horse riding or boating on the large Serpentine Lake. In addition Knightsbridge is considered by many as London's cultural centrepiece, with The Natural History Museum and The Victoria and Albert Museum close by.

Furnishing

Furnished



Hamptons Knightsbridge Lettings

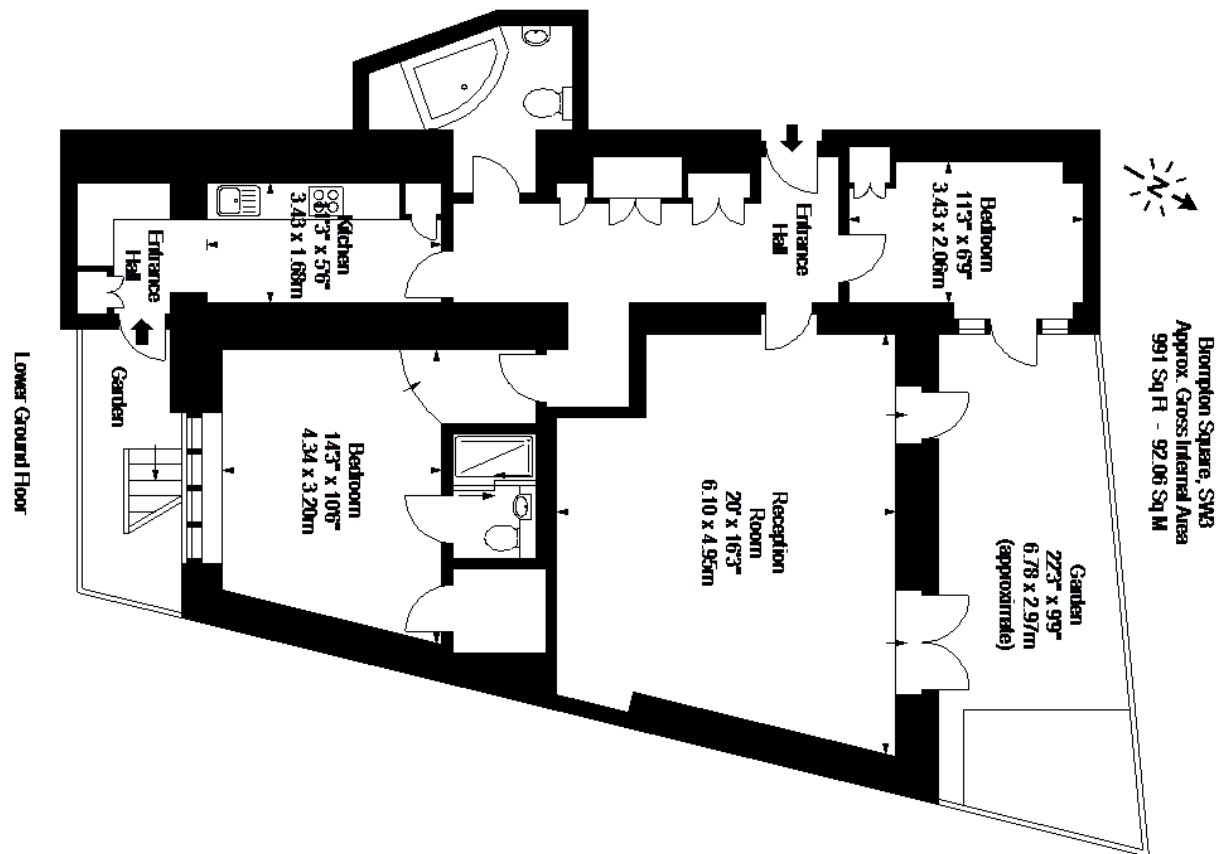
168 Brompton Road, Knightsbridge

London SW3 1HW

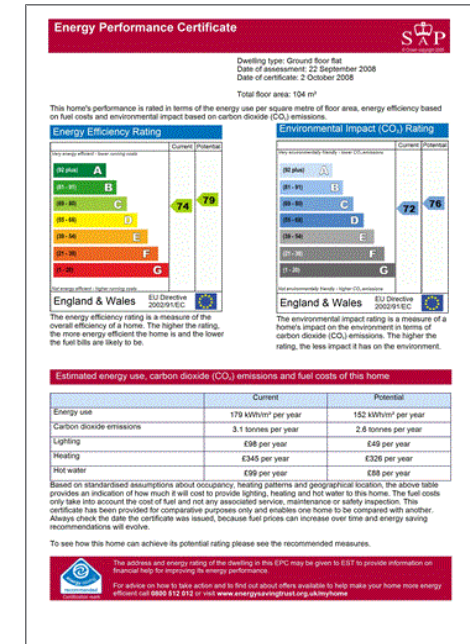
Tel: 020 7584 2014 - KnightsbridgeLettings@hamptons-int.com

www.hamptons.co.uk

Floorplan



Energy Performance Certificate (EPC)



For clarification, we wish to inform prospective purchasers that we have prepared these sales particulars as a general guide. We have not verified permissions, nor carried out a survey, tested the services, appliances and specific fittings. Room sizes are approximate and rounded: they are taken between internal wall surfaces and therefore include cupboards/shelves, etc. Accordingly, they should not be relied upon for carpets and furnishings. It should also be noted that all fixtures and fittings, carpeted, curtains/blinds, kitchen equipment and garden statuary, whether fitted or not, are deemed removable by the vendor unless specifically itemised with these particulars.

Hamptons Knightsbridge Lettings

168 Brompton Road, Knightsbridge

London SW3 1HW

Tel: 020 7584 2014 - KnightsbridgeLettings@hamptons-int.com

www.hamptons.co.uk



HAMPTONS
INTERNATIONAL

Beyond your expectations