



Stanhope Gardens South Kensington SW7

£630 Per Week - Available Now

HAMPTONS
INTERNATIONAL

Beyond your expectations

Stanhope Gardens South Kensington SW7

£630 Per Week - Available Now

HAMPTONS
INTERNATIONAL

Situated in this sought after and very well run portered building moments from South Kensington, this neutrally decorated property boasts a wealth of natural light.

2 Bedrooms | 2 Bathrooms | Under Floor Heating | Dishwasher | Fridge/Freezer | Gas Hob | Oven | Washer\Dryer | CCTV & Security | Porter | Communal Garden | Parking by Negotiation | Permit Parking.

Description

Situated in this sought after and very well run portered building moments from South Kensington, this neutrally decorated property boasts a wealth of natural light. The property further benefits from under floor heating throughout as well as access to communal gardens.

Situation

Centrally located in South Kensington, this is an exquisite part of London and home to the social elite. The area contains many of London's finest restaurants, shops, art galleries and hotels. Knightsbridge and South Kensington themselves are premier international business locations, which benefits from its close proximity to the West End and is in easy reach of the City of

London and Canary Wharf. Knightsbridge and South Kensington are also famed for Hyde Park where you can walk, run, go horse riding or boating on the large Serpentine Lake. In addition, the area is considered by many as London's cultural centrepiece, with The Natural History Museum, The Victoria and Albert Museum and The Royal Albert Hall close by.

Furnishing

Furnished



External2



Kitchen

Hamptons Knightsbridge Lettings

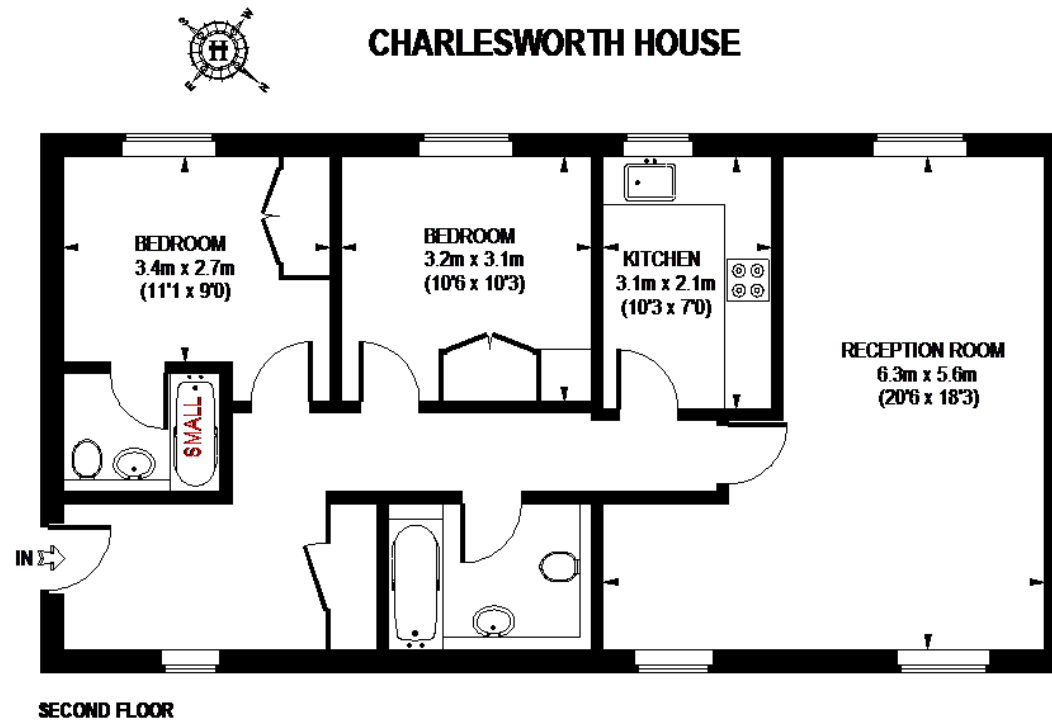
168 Brompton Road, Knightsbridge

London SW3 1HW

Tel: 020 7584 2014 - KnightsbridgeLettings@hamptons-int.com

www.hamptons.co.uk

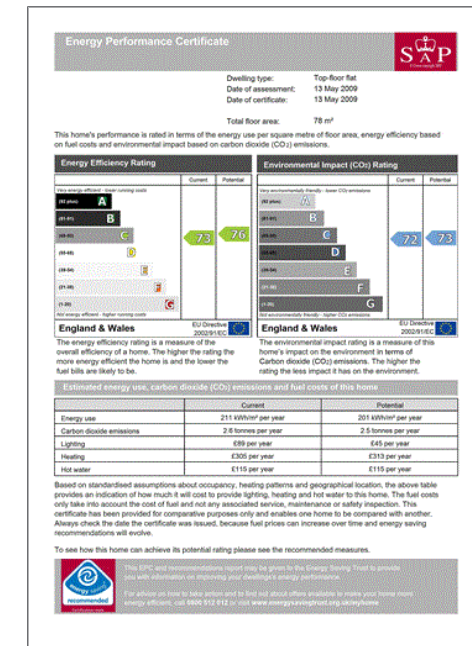
Floorplan



APPROXIMATE GROSS INTERNAL AREA = 839 SQ. FT. (78 SQ. M.)

This plan is for layout guidance only. Not drawn to scale unless stated. Windows & door openings are approximate. Whilst every care is taken in the preparation of this plan, please check all dimensions, shapes & compass bearings before making any decisions relied upon them.

Energy Performance Certificate (EPC)



For clarification, we wish to inform prospective purchasers that we have prepared these sales particulars as a general guide. We have not verified permissions, nor carried out a survey, tested the services, appliances and specific fittings. Room sizes are approximate and rounded: they are taken between internal wall surfaces and therefore include cupboards/shelves, etc. Accordingly, they should not be relied upon for carpets and furnishings. It should also be noted that all fixtures and fittings, carpeted, curtains/blinds, kitchen equipment and garden statuary, whether fitted or not, are deemed removable by the vendor unless specifically itemised with these particulars.

Hamptons Knightsbridge Lettings

168 Brompton Road, Knightsbridge

London SW3 1HW

Tel: 020 7584 2014 - KnightsbridgeLettings@hamptons-int.com

www.hamptons.co.uk

HAMPTONS
INTERNATIONAL

Beyond your expectations