



Basil Street Knightsbridge SW3

£950 Per Week - Available 02/11/2017

**HAMPTONS**  
INTERNATIONAL

*Beyond your expectations*

*Situated on the second floor, this neutrally presented two double bedroom property boasts a wealth of natural light and a contemporary finish. The apartment further benefits a resident porter.*

2 Bedrooms | 3 Bathrooms | Porter | Lift.

### Description

The apartment has the benefit of a well sized eat-in kitchen with granite work tops, two large double bedrooms with built in storage as well as both benefiting from en-suites. The property is ideally located to all the amenities of Knightsbridge including the world famous Harrods and Harvey Nichols.

### Situation

Centrally located, Knightsbridge is an exquisite part of London and home to the social elite. The area contains many of London's finest restaurants, shops, art galleries and hotels. Knightsbridge itself is a premier international business location, which benefits from its close proximity to the West End and is in easy reach of the City of London and Canary Wharf.

Knightsbridge is also famed for Hyde Park where you can walk, run, go horse riding or boating on the large Serpentine Lake. In addition Knightsbridge is considered by many to be London's cultural centrepiece, with The Natural History Museum and The Victoria and Albert Museum close by.

### Furnishing

Furnished



### Hamptons Knightsbridge Lettings

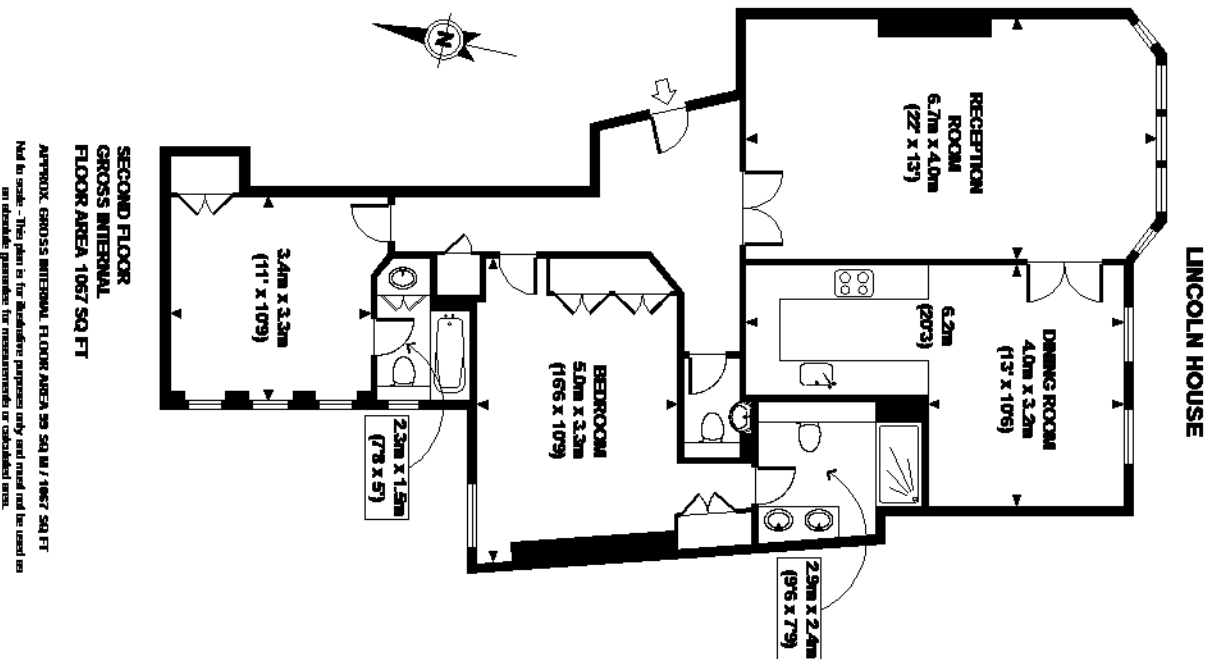
168 Brompton Road, Knightsbridge

London SW3 1HW

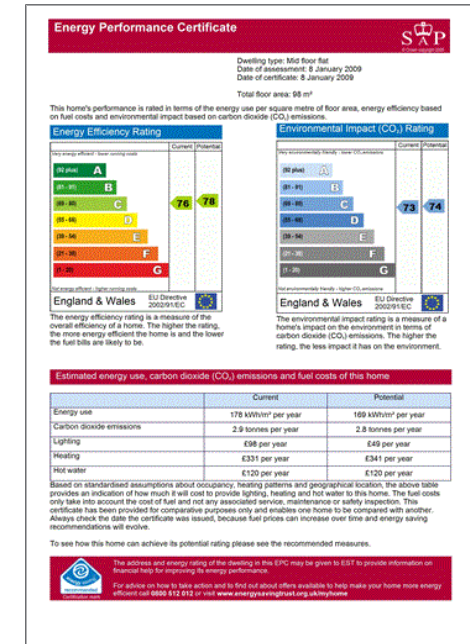
Tel: 020 7584 2014 - [KnightsbridgeLettings@hamptons-int.com](mailto:KnightsbridgeLettings@hamptons-int.com)

[www.hamptons.co.uk](http://www.hamptons.co.uk)

## Floorplan



## Energy Performance Certificate (EPC)



**For clarification,** we wish to inform prospective purchasers that we have prepared these sales particulars as a general guide. We have not verified permissions, nor carried out a survey, tested the services, appliances and specific fittings. Room sizes are approximate and rounded: they are taken between internal wall surfaces and therefore include cupboards/shelves, etc. Accordingly, they should not be relied upon for carpets and furnishings. It should also be noted that all fixtures and fittings, carpeted, curtains/blinds, kitchen equipment and garden statuary, whether fitted or not, are deemed removable by the vendor unless specifically itemised with these particulars.

## Hamptons Knightsbridge Lettings

168 Brompton Road, Knightsbridge

London SW3 1HW

Tel: 020 7584 2014 - [KnightsbridgeLettings@hamptons-int.com](mailto:KnightsbridgeLettings@hamptons-int.com)

[www.hamptons.co.uk](http://www.hamptons.co.uk)

**HAMPTONS**  
INTERNATIONAL

*Beyond your expectations*