



Lancelot Place Knightsbridge SW7

£1,495 Per Week - Available 10/05/2017

HAMPTONS
INTERNATIONAL

Beyond your expectations

Lancelot Place Knightsbridge SW7

£1,495 Per Week - Available 10/05/2017

HAMPTONS
INTERNATIONAL

Situated in this prestigious development moments from the famous Harrods department store, offering hardwood floors, lift, concierge, gym, pool and air conditioning.

1 Bedroom | 1 Bathroom | Air Conditioning | Under Floor Heating | Dryer | Fridge/Freezer | Gas Cooking | Microwave | Oven | Washer | 24 Hour Security | Alarm | Concierge | Lift | Pool | Underground Parking.

Description

Situated in this prestigious development moments from the famous Harrods department store, offering hardwood floors, lift, concierge, gym, pool and air conditioning. This beautifully presented apartment has been finished to exacting detail, with interior designed furniture, fixtures, fittings and artwork. Further benefits include swimming pool, 24 hour Porterage as well as security.

Situation

Centrally located, Knightsbridge is an exquisite part of London and home to the social elite. The area contains many of London's finest restaurants, shops, art galleries and hotels. Knightsbridge itself is a premier international business location, which benefits from its close

proximity to the West End and is in easy reach of the City of London and Canary Wharf. Knightsbridge is also famed for Hyde Park where you can walk, run, go horse riding or boating on the large Serpentine Lake. In addition Knightsbridge is considered by many to be London's cultural centrepiece, with The Natural History Museum and The Victoria and Albert Museum close by.

Furnishing

Furnished



Hamptons Knightsbridge Lettings

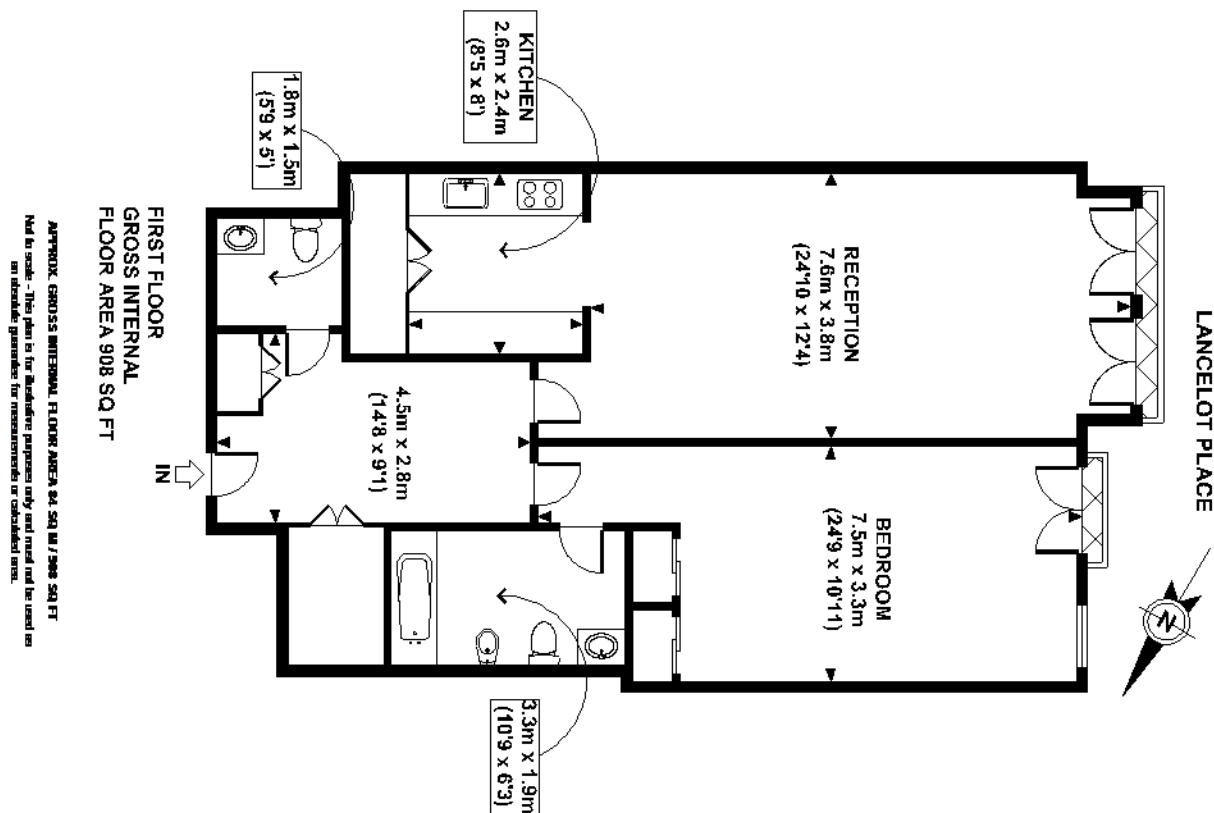
168 Brompton Road, Knightsbridge

London SW3 1HW

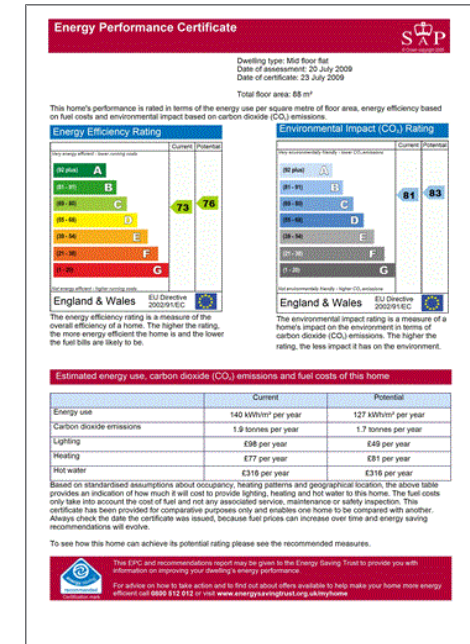
Tel: 020 7584 2014 - KnightsbridgeLettings@hamptons-int.com

www.hamptons.co.uk

Floorplan



Energy Performance Certificate (EPC)



For clarification, we wish to inform prospective purchasers that we have prepared these sales particulars as a general guide. We have not verified permissions, nor carried out a survey, tested the services, appliances and specific fittings. Room sizes are approximate and rounded: they are taken between internal wall surfaces and therefore include cupboards/shelves, etc. Accordingly, they should not be relied upon for carpets and furnishings. It should also be noted that all fixtures and fittings, carpeted, curtains/blinds, kitchen equipment and garden statuary, whether fitted or not, are deemed removable by the vendor unless specifically itemised with these particulars.

Hamptons Knightsbridge Lettings

168 Brompton Road, Knightsbridge

London SW3 1HW

Tel: 020 7584 2014 - KnightsbridgeLettings@hamptons-int.com

www.hamptons.co.uk

HAMPTONS
INTERNATIONAL

Beyond your expectations