



Lowndes Square Knightsbridge SW1X

£965 Per Week - Available Now

**HAMPTONS**  
INTERNATIONAL

*Beyond your expectations*

# Lowndes Square Knightsbridge SW1X

£965 Per Week - Available Now

**HAMPTONS**  
INTERNATIONAL

*Located in this highly desirable garden square encompassing both Knightsbridge and Belgravia.*

1 Bedroom | 1 Bathroom | Porter.

## Description

The apartment is presented in immaculate order; boasting a wealth of natural light, high ceilings, contemporary styling as well as fabulous storage. This property provides almost immediate access to varied world famous shopping on Sloane Street including Harvey Nichols as well as the transport links of the area.

## Situation

Centrally located, this is an exquisite part of London and home to the social elite. The area contains many of London's finest restaurants, shops, art galleries and hotels. Knightsbridge itself is a premier international business locations, which benefits from its close proximity to the West End and is in easy reach of the City of London and Canary Wharf. Knightsbridge and

South Kensington are also famed for Hyde Park where you can walk, run, go horse riding or boating on the large Serpentine Lake. In addition, the area is considered by many as London's cultural centrepiece, with The Natural History Museum, The Victoria and Albert Museum and The Royal Albert Hall close by. Needless to say the location is moments away from the varied transport links and Underground Station of Knightsbridge.

## Furnishing

Furnished



## Hamptons Knightsbridge Lettings

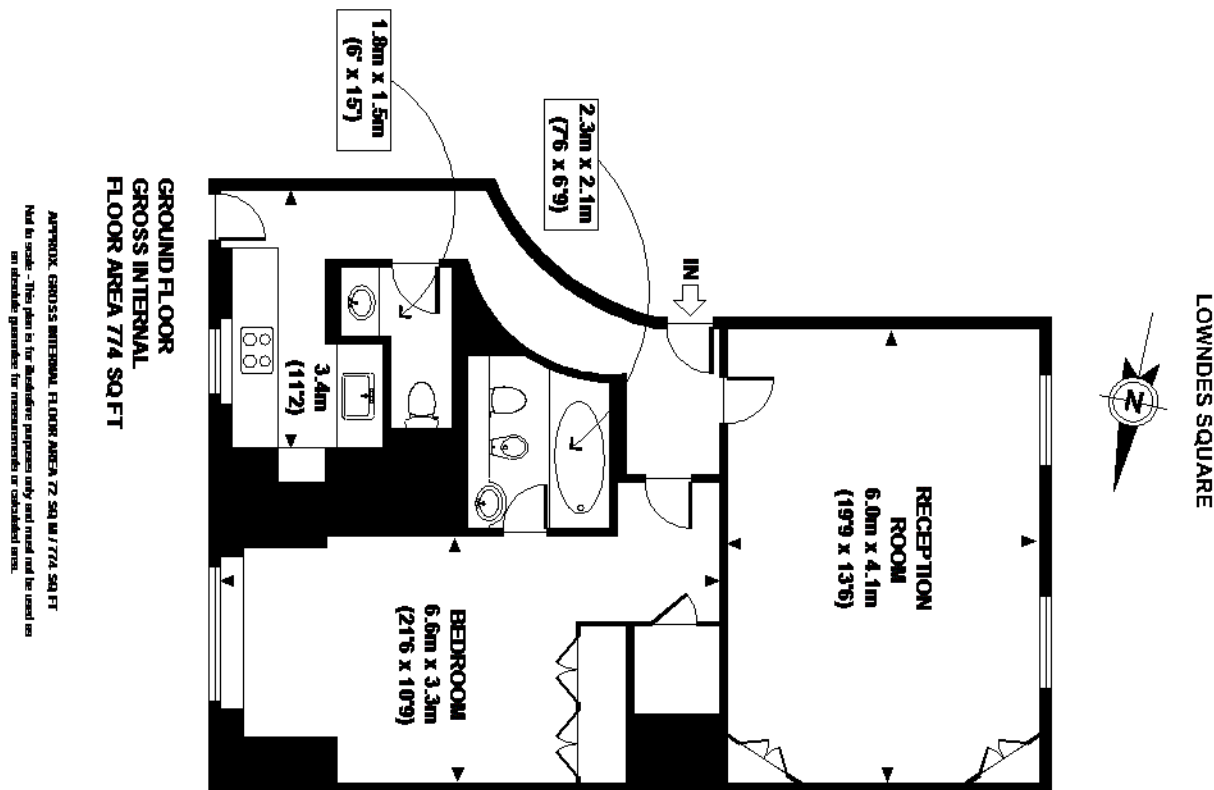
168 Brompton Road, Knightsbridge

London SW3 1HW

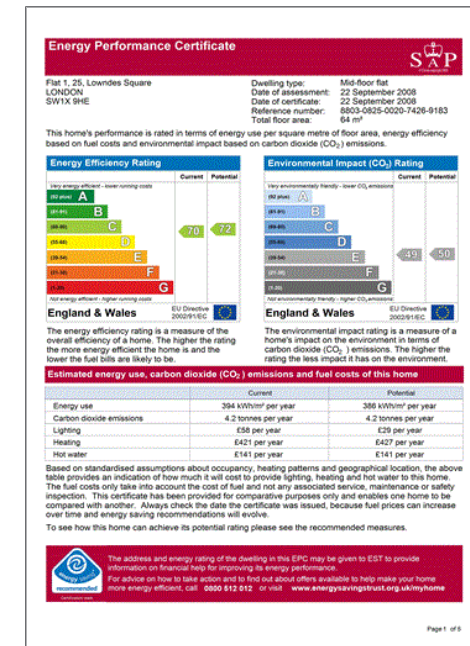
Tel: 020 7584 2014 - [KnightsbridgeLettings@hamptons-int.com](mailto:KnightsbridgeLettings@hamptons-int.com)

[www.hamptons.co.uk](http://www.hamptons.co.uk)

## Floorplan



## Energy Performance Certificate (EPC)



**For clarification,** we wish to inform prospective purchasers that we have prepared these sales particulars as a general guide. We have not verified permissions, nor carried out a survey, tested the services, appliances and specific fittings. Room sizes are approximate and rounded: they are taken between internal wall surfaces and therefore include cupboards/shelves, etc. Accordingly, they should not be relied upon for carpets and furnishings. It should also be noted that all fixtures and fittings, carpeted, curtains/blinds, kitchen equipment and garden statuary, whether fitted or not, are deemed removable by the vendor unless specifically itemised with these particulars.

## Hamptons Knightsbridge Lettings

168 Brompton Road, Knightsbridge

London SW3 1HW

Tel: 020 7584 2014 - [KnightsbridgeLettings@hamptons-int.com](mailto:KnightsbridgeLettings@hamptons-int.com)

[www.hamptons.co.uk](http://www.hamptons.co.uk)

**HAMPTONS**  
INTERNATIONAL

Beyond your expectations