



Knightsbridge London SW1X

£40,000 Per Week - Available 20/05/2017

**HAMPTONS**  
INTERNATIONAL

*Beyond your expectations*

*SHORT LET - Boasting uninterrupted views over the wide open green spaces of Hyde Park itself, this stunning lateral Penthouse apartment is located in the very heart of Knightsbridge.*

6 bedrooms | 7 bathrooms | Roof terrace | Porter | Cinema room | Massage room | Gym | Air conditioning.

### Description

Boasting uninterrupted views over the wide open green spaces of Hyde Park itself, this stunning lateral Penthouse apartment is located in the very heart of Knightsbridge. Further benefits include a most fabulous contemporary finish to include sumptuous hardwood flooring, split level receptions, private roof terrace, private balconies as well as a private gym and home cinema room.

### Situation

Centrally located in Knightsbridge is an exquisite part of London and home to the social elite. The area contains many of London's finest restaurants, shops, art galleries and hotels. Knightsbridge itself is a premier international business location, which benefits from its close proximity to the West End and is in easy reach of

the City of London and Canary Wharf. Knightsbridge is also famed for Hyde Park where you can walk, run, go horse riding or boating on the large Serpentine Lake. In addition Knightsbridge is considered by many as London's cultural centrepiece, with The Natural History Museum and The Victoria and Albert Museum close by.

### Furnishing

Furnished



penthouse-wellington-court-18



### Hamptons Knightsbridge Lettings

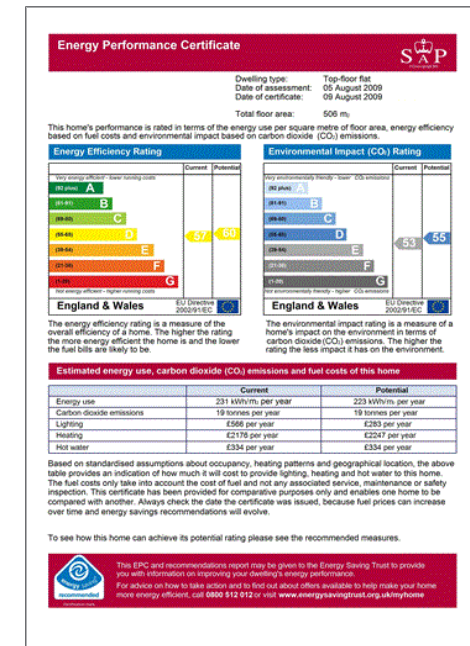
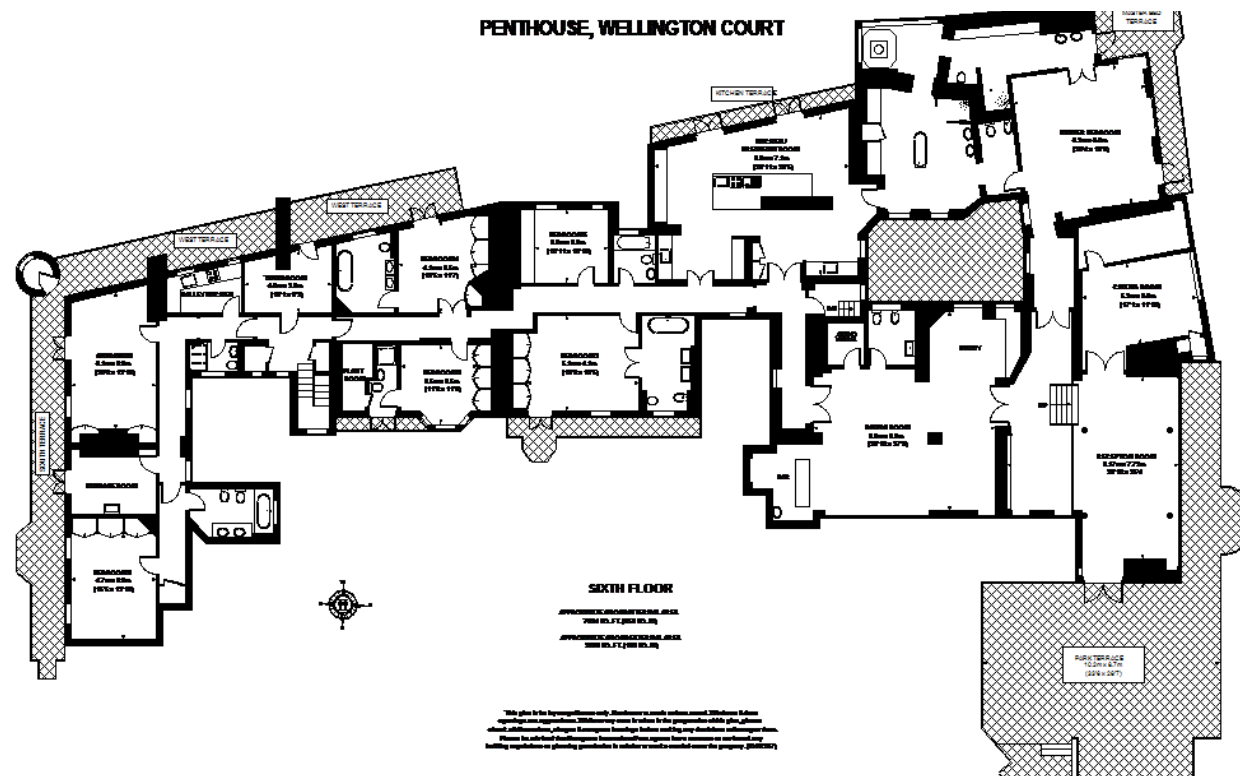
168 Brompton Road, Knightsbridge

London SW3 1HW

Tel: 020 7584 2014 - [KnightsbridgeLettings@hamptons-int.com](mailto:KnightsbridgeLettings@hamptons-int.com)

[www.hamptons.co.uk](http://www.hamptons.co.uk)





**For clarification,** we wish to inform prospective purchasers that we have prepared these sales particulars as a general guide. We have not verified permissions, nor carried out a survey, tested the services, appliances and specific fittings. Room sizes are approximate and rounded: they are taken between internal wall surfaces and therefore include cupboards/shelves, etc. Accordingly, they should not be relied upon for carpets and furnishings. It should also be noted that all fixtures and fittings, carpeted, curtains/blinds, kitchen equipment and garden statuary, whether fitted or not, are deemed removable by the vendor unless specifically itemised with these particulars.

## Hamptons Knightsbridge Lettings

168 Brompton Road, Knightsbridge

London SW3 1HW

Tel: 020 7584 2014 - [KnightsbridgeLettings@hamptons-int.com](mailto:KnightsbridgeLettings@hamptons-int.com)

[www.hamptonshires.co.uk](http://www.hamptonshires.co.uk)



**HAMPTONS**  
INTERNATIONAL

## Beyond your expectations