



Emperors Gate South Kensington SW7

£460 Per Week - Available 22/12/2016

HAMPTONS
INTERNATIONAL

Beyond your expectations

Emperors Gate South Kensington SW7

£460 Per Week - Available 22/12/2016

HAMPTONS
INTERNATIONAL

Situated on the top floor of this immaculate period building, this contemporarily styled apartment has been finished to exacting detail.

1 bedroom | 1 bathroom | Heating and cooling included in rent | Lift.

Description

Situated on the top floor of this immaculate period building, this contemporarily styled apartment has been finished to exacting detail. The apartment benefits from excellent levels of natural light and hardwood flooring. The location provides ease of access to the shopping and variety of cafés as well as the transport links of Gloucester Road.

Situation

Centrally located, South Kensington is an exquisite part of London and home to the social elite. The area contains many of London's finest restaurants, shops, art galleries and hotels. South Kensington is also famed for Hyde Park where you can walk, run, go horse riding or boating on the large Serpentine Lake. In addition, South

Kensington is considered by many as London's cultural centrepiece, with The Natural History Museum and The Victoria and Albert Museum close by.

Furnishing

Furnished



7-5-emperors-gate-002



7-5-emperors-gate-005

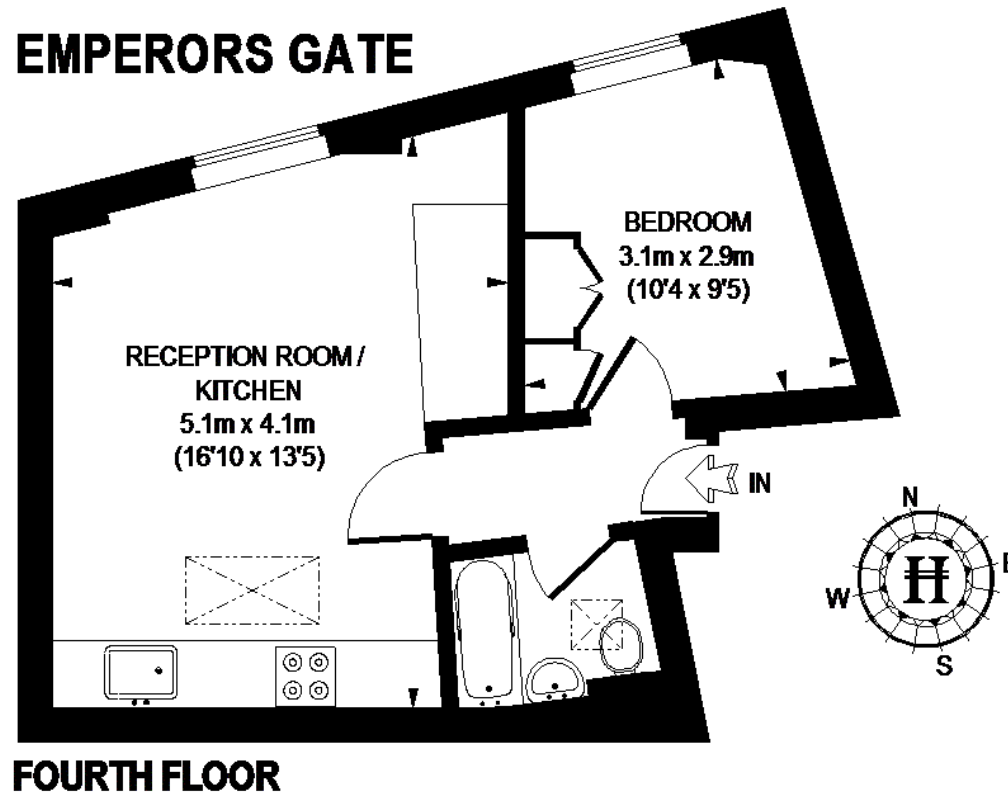
Hamptons Knightsbridge Lettings

168 Brompton Road, Knightsbridge

London SW3 1HW

Tel: 020 7584 2014 - KnightsbridgeLettings@hamptons-int.com

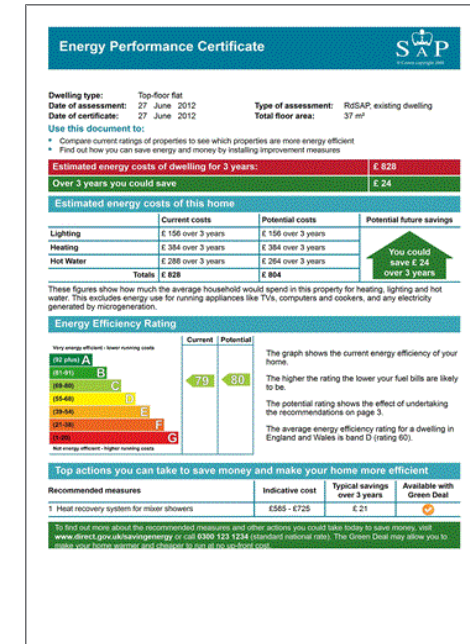
www.hamptons.co.uk



APPROXIMATE GROSS INTERNAL AREA = 340 SQ. FT. (31.6 SQ. M.)

This plan is for layout guidance only. Not drawn to scale unless stated. Windows & door openings are approximate. Whilst every care is taken in the preparation of this plan, please check all dimensions, shapes & compass bearings before making any decisions reliant upon them. Please be advised that Hamptons International / our agents have not seen or reviewed any building regulations or planning permission in relation to works carried out to the property. (0135633)

For clarification, we wish to inform prospective purchasers that we have prepared these sales particulars as a general guide. We have not verified permissions, nor carried out a survey, tested the services, appliances and specific fittings. Room sizes are approximate and rounded: they are taken between internal wall surfaces and therefore include cupboards/shelves, etc. Accordingly, they should not be relied upon for carpets and furnishings. It should also be noted that all fixtures and fittings, carpeted, curtains/blinds, kitchen equipment and garden statuary, whether fitted or not, are deemed removable by the vendor unless specifically itemised with these particulars.



Hamptons Knightsbridge Lettings

168 Brompton Road, Knightsbridge

London SW3 1HW

Tel: 020 7584 2014 - KnightsbridgeLettings@hamptons-int.com

www.hamptons.co.uk

HAMPTONS
INTERNATIONAL

Beyond your expectations