



Cornwall Gardens South Kensington SW7

£450 Per Week - Available 30/05/2017

HAMPTONS
INTERNATIONAL

Beyond your expectations

Cornwall Gardens South Kensington SW7

£450 Per Week - Available 30/05/2017

HAMPTONS
INTERNATIONAL

A beautifully presented, airy studio apartment in the heart of South Kensington benefiting from a full refurbishment.

Studio | Furnished | Prime location | Immaculately presented | Views over communal garden.

Description

A beautifully presented, airy studio apartment in the heart of South Kensington benefiting from a full refurbishment. The apartment benefits from a spacious open plan kitchen and living area with a separated bedroom and en-suite.

Situation

Centrally located in South Kensington, this is an exquisite part of London and home to the social elite. The area contains many of London's finest restaurants, shops, art galleries and hotels. Knightsbridge and South Kensington are also famed for Hyde Park where you can walk, run, go horse riding or boating on the large Serpentine Lake. In addition, the area is considered by many as London's cultural centrepiece, with The Natural History Museum, The Victoria and Albert

Museum and The Royal Albert Hall close by. Needless to say the location is moments away from the varied transport links and Underground Stations of Gloucester Road and South Kensington.

Furnishing

Furnished



Hamptons Knightsbridge Lettings

168 Brompton Road, Knightsbridge
London SW3 1HW

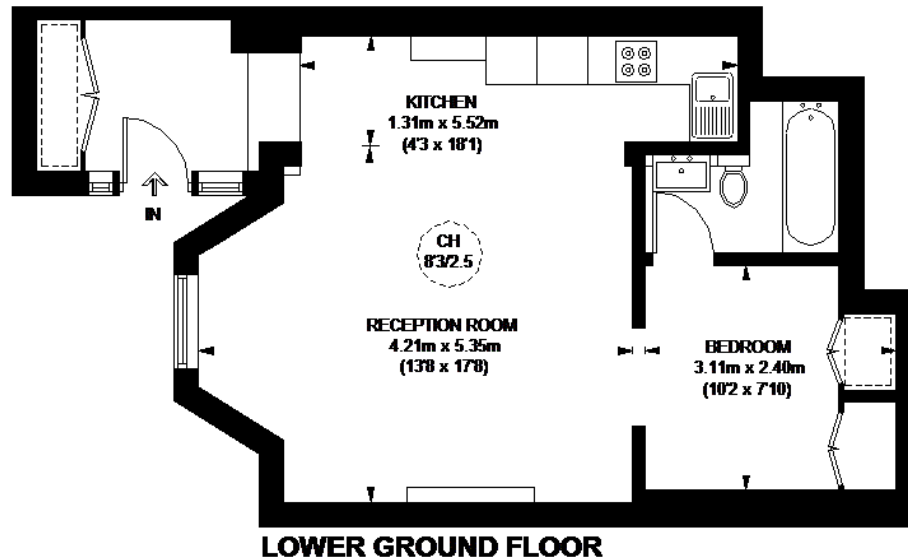
Tel: 020 7584 2014 - KnightsbridgeLettings@hamptons-int.com

www.hamptons.co.uk

Floorplan

Energy Performance Certificate (EPC)

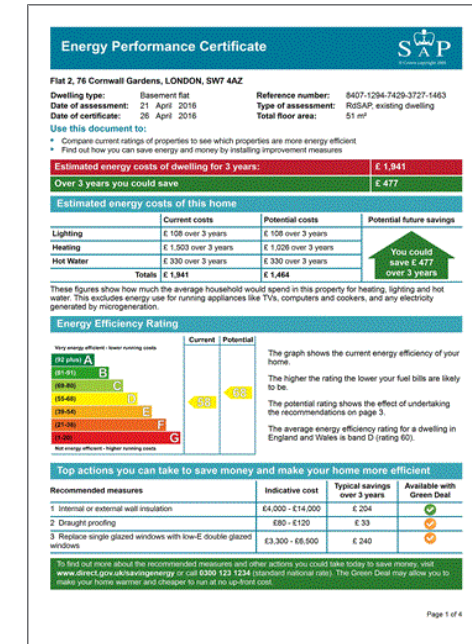
CORNWALL GARDENS



CEILING HEIGHT

**APPROXIMATE GROSS INTERNAL AREA
(EXCLUDING REDUCED HEADROOM)**
501 SQ. FT. (46.5 SQ. M.)
REDUCED HEADROOM
12 SQ. FT. (1.2 SQ. M.)
TOTAL = 513 SQ. FT. (47.7 SQ. M.)

This plan is for layout guidance only. Not drawn to scale unless stated. Windows and door openings are approximate. Whilst every care is taken in the preparation of this plan, please check all dimensions, shapes and compass bearings before making any decisions related upon them. Please be advised that Hamptons International / our agents have not seen or reviewed any building regulations or planning permission in relation to works carried out to the property (10273540)



For clarification, we wish to inform prospective purchasers that we have prepared these sales particulars as a general guide. We have not verified permissions, nor carried out a survey, tested the services, appliances and specific fittings. Room sizes are approximate and rounded: they are taken between internal wall surfaces and therefore include cupboards/shelves, etc. Accordingly, they should not be relied upon for carpets and furnishings. It should also be noted that all fixtures and fittings, carpeted, curtains/blinds, kitchen equipment and garden statuary, whether fitted or not, are deemed removable by the vendor unless specifically itemised with these particulars.

Hamptons Knightsbridge Lettings

168 Brompton Road, Knightsbridge

London SW3 1HW

Tel: 020 7584 2014 - KnightsbridgeLettings@hamptons-int.com

www.hamptons.co.uk

HAMPTONS
INTERNATIONAL

Beyond your expectations