



Premium

Clareville Street South Kensington SW7

£2,500 Per Week - Available 23/08/2016

HAMPTONS
INTERNATIONAL

Beyond your expectations

Clareville Street South Kensington SW7

£2,500 Per Week - Available 23/08/2016

HAMPTONS
INTERNATIONAL

SHORT LET - ALL BILLS INCLUDED - A beautifully presented and well proportioned four bedroom house offering wonderful open views to the south down Clareville Street.

3/4 bedrooms | 2 bathrooms | 1/2 reception rooms | Furnished or Unfurnished | Outside space.

Description

A beautifully presented and well proportioned four bedroom house offering wonderful open views to the south down Clareville Street. This very attractive house offers versatile accommodation comprising a generous double reception room, a well appointed and light kitchen with access to a flat roof area, four bedrooms and two bathrooms and a patio garden. Bedroom three could also be used as a second reception room leading to the garden.

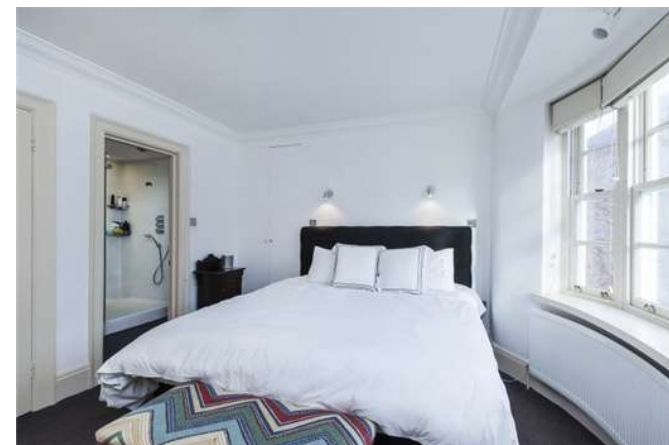
Situation

Centrally located in South Kensington, this is an exquisite part of London and home to the social elite. The area contains many of London's finest restaurants, shops, art galleries and hotels. Knightsbridge and South Kensington themselves

are premier international business locations, which benefits from its close proximity to the West End and is in easy reach of the City of London and Canary Wharf. Knightsbridge and South Kensington are also famed for Hyde Park where you can walk, run, go horse riding or boating on the large Serpentine Lake. In addition, the area is considered by many as London's cultural centrepiece, with The Natural History Museum, The Victoria and Albert Museum and The Royal Albert Hall close by. Needless to say the location is moments away from the varied transport links and Underground Station of South Kensington.

Furnishing

Furnished



Hamptons Knightsbridge Lettings

168 Brompton Road, Knightsbridge
London SW3 1HW

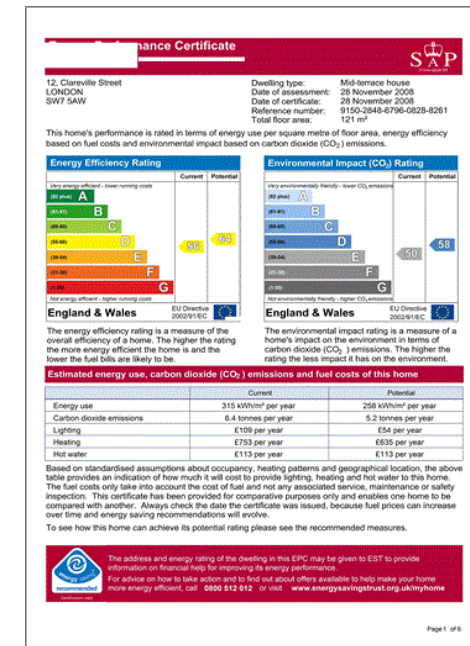
Tel: 020 7584 2014 - KnightsbridgeLettings@hamptons-int.com

www.hamptons.co.uk

Floorplan



Energy Performance Certificate (EPC)



For clarification, we wish to inform prospective purchasers that we have prepared these sales particulars as a general guide. We have not verified permissions, nor carried out a survey, tested the services, appliances and specific fittings. Room sizes are approximate and rounded: they are taken between internal wall surfaces and therefore include cupboards/shelves, etc. Accordingly, they should not be relied upon for carpets and furnishings. It should also be noted that all fixtures and fittings, carpeted, curtains/blinds, kitchen equipment and garden statuary, whether fitted or not, are deemed removable by the vendor unless specifically itemised with these particulars.

Hamptons Knightsbridge Lettings

168 Brompton Road, Knightsbridge

London SW3 1HW

Tel: 020 7584 2014 - KnightsbridgeLettings@hamptons-int.com

www.hamptons.co.uk

HAMPTONS
INTERNATIONAL

Beyond your expectations