



Stanhope Gardens South Kensington SW7

£2,950 Per Week - Available Now

HAMPTONS
INTERNATIONAL

Beyond your expectations

Stanhope Gardens South Kensington SW7

£2,950 Per Week - Available Now

HAMPTONS
INTERNATIONAL

SHORT LET - ALL BILLS INCLUDED - Beautiful three bedroom house in the heart of South Kensington providing an abundance of space and light.

3 bedrooms | South Kensington | 4 bathrooms | Balcony + roof terrace | Off street parking.

Description

Beautiful three bedroom house in the heart of South Kensington providing an abundance of space and light. The property benefits from a good sized kitchen, formal dining room and large reception room. There are three double bedrooms all with own bathrooms and additional family bathroom on the second floor. A large roof terrace can be found on the third floor as well as a balcony on the first floor.

Situation

Centrally located in South Kensington, this is an exquisite part of London and home to the social elite. The area contains many of London's finest restaurants, shops, art galleries and hotels. Knightsbridge and South Kensington are also famed for Hyde Park where you can walk, run, go

horse riding or boating on the large Serpentine Lake. In addition, the area is considered by many as London's cultural centrepiece, with The Natural History Museum, The Victoria and Albert Museum and The Royal Albert Hall close by. Needless to say the location is moments away from the varied transport links and Underground Stations of Gloucester Road and South Kensington.

Furnishing

Furnished



Hamptons Knightsbridge Lettings

168 Brompton Road, Knightsbridge

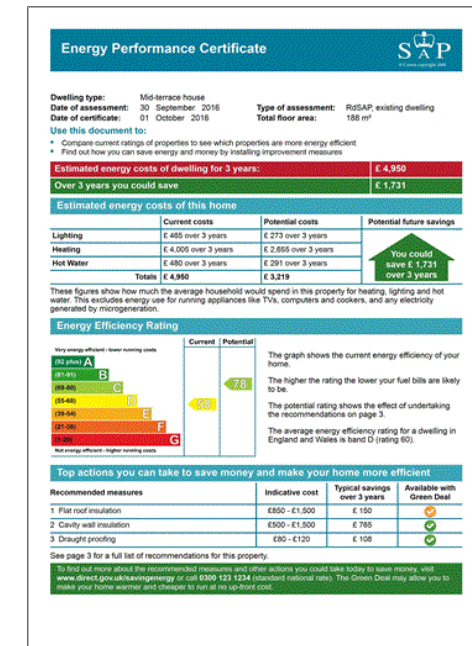
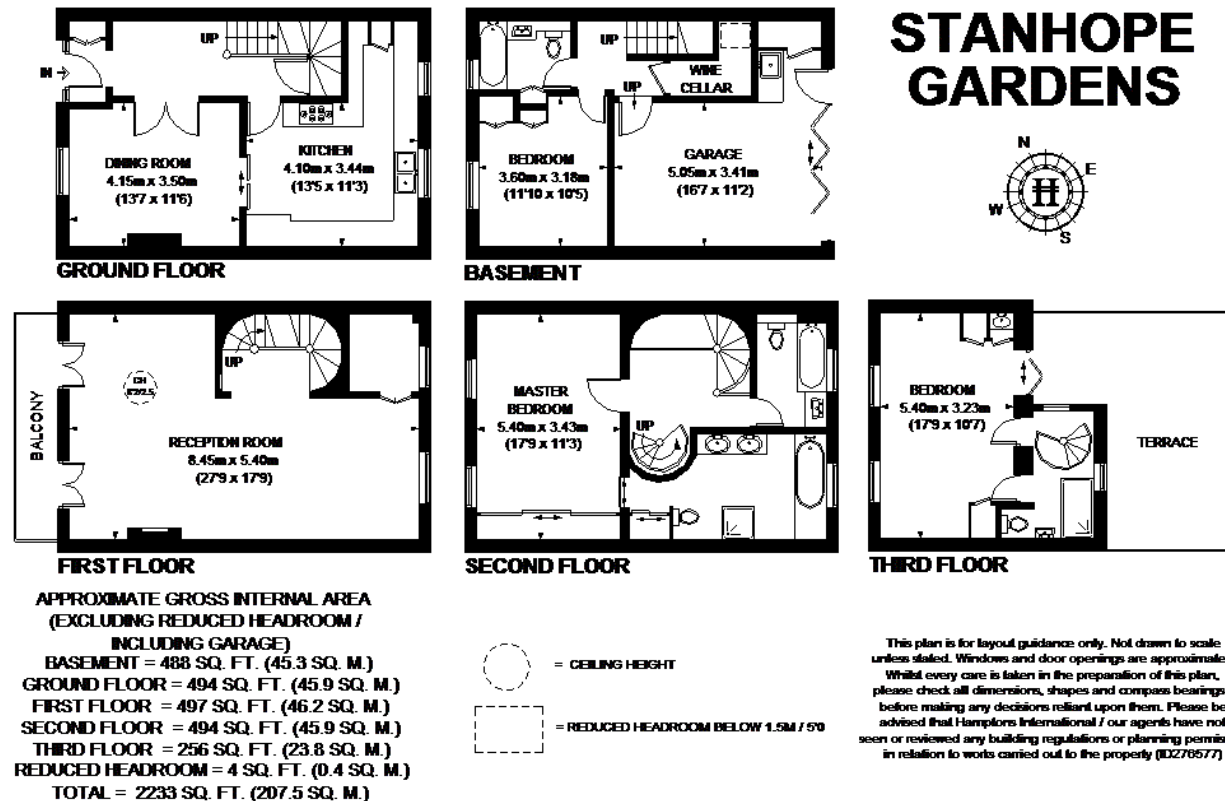
London SW3 1HW

Tel: 020 7584 2014 - KnightsbridgeLettings@hamptons-int.com

www.hamptons.co.uk

Floorplan

Energy Performance Certificate (EPC)



For clarification, we wish to inform prospective purchasers that we have prepared these sales particulars as a general guide. We have not verified permissions, nor carried out a survey, tested the services, appliances and specific fittings. Room sizes are approximate and rounded: they are taken between internal wall surfaces and therefore include cupboards/shelves, etc. Accordingly, they should not be relied upon for carpets and furnishings. It should also be noted that all fixtures and fittings, carpeted, curtains/blinds, kitchen equipment and garden statuary, whether fitted or not, are deemed removable by the vendor unless specifically itemised with these particulars.

Hamptons Knightsbridge Lettings

168 Brompton Road, Knightsbridge

London SW3 1HW

Tel: 020 7584 2014 - KnightsbridgeLettings@hamptons-int.com

www.hamptons.co.uk

HAMPTONS
INTERNATIONAL

Beyond your expectations